

SKINZ[®]

2010



Table of Contents

Men's Swimwear (more to less coverage)

Page 1
Cover

Table Of Contents
Guide to Styles

Page 2
Super Low Jammer (M62)

Page 3
Aussie Brief (M61)
NFS Boxer (M43)

Page 4
Low Brief (M16)
Competition Brief (M64)

Page 5
Smooth Bikini (M26)

Page 6
Fitted Bikini (M63)

Page 7
Rio (M54)

Page 8
Skinny Side Rio (M27)

Page 9
Super Low Rio (M29)

Page 10
Sunseeker Rio (M57)
Sunseeker II (M66)

Page 11
Packman Rio (M58)

Page 12
Low Thong (M67)
Quick Release Hook Thong (M32)
Flopper Dancer Thong (M60)

Page 13
Bravura Thong (M44)
Bravura Quick Release Hook Thong (M65)

Page 14
Skinny Side Thong (M25)

Page 15
Roman G String (M46)
Pistol Bikini (M49)

Page 16
Stuffit G String (M55)

Page 17
Micro G String (M1R2)

Page 18
Spartan G String (M52)

Men's Apparel

Page 18
James Dean Tee (G1)
Gym Tank (G2)
Muscle Tank (G20)
Rash Guard (RG)
NFS Short (A12)
Gym Short (M50)

Page 19
Hot Shorts (M19)

Information and Order Form

Page 20
Order Form and Shipping Information

Page 21
Fabric List and Style List

Women's Swimwear (less to more coverage)

Page 22
Micro G String (B50)
Micro G String Tie (B34)
Adjustable G String (B1R)

Page 23
Teardrop G String (B37)
Low Rise Thong (B51)
Booty Thong (B61)

Page 24
One Piece Thong (F10)
One Piece Nikki Malliot (F11)
One Piece Rio (F2)

Page 25
Low Rise Bun Huggin Rio (B53)
Low Rise Rio (B54)

Page 26
Skinny Side Rio (B7)
Low Rise Tie Rio (B40)

Page 27
Low Rise Brazilian (B55)
Low Rise Bun Huggin Brazilian (B62)

Page 28
Moderate California (B11)
Low Rise Tie Brazilian (B56)
Classic Brazilian (B8)

Page 29
Low Rise Moderate (B57)
Side Tie Moderate B58)
Low Rise Full (B59)
Boy Cut (B60)
Women's Apparel

Page 30
Tights (A4)
Low Tights (A11)

Page 31
Catsuit (C1)
Front Zip Catsuit (C1FZ)
CamiCat (C4)
Halter Catsuit (C2)

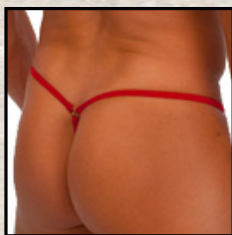
Page 32
Dress (D1)
Ring Dress (D6)
Lace Up Dress (D7)
Slip Dress (D8)

WEBSITE Only

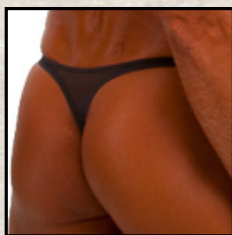
Women's Low Rise Capris (A18)
Men's Low Rise Capris (A18M)
Women's Low Rise Tights (A19)
Men's Low Rise Tights (A19M)
Women's Hot Pants (A19)

Note : RED text indicates new item

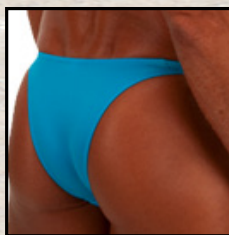
Men's Style Guide Rear View:



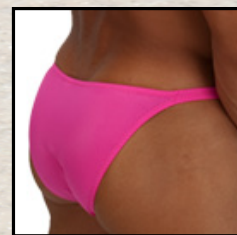
Swim G-String
M1R - M46
M52 - M55



Swim Thong
M25 - M44
M65 - M67



Swim Rio
M29 - M27 - M54
M56 - M57 - M58



Swim Bikini
M26 - M63



Swim Brief
M16 - M64



Swim Boxer
M43 - M61



Swim Shorts
M50 - M51 - M62

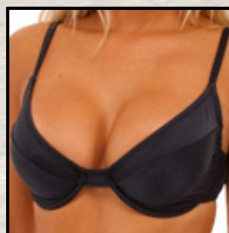
Women's Style Guide Top View:



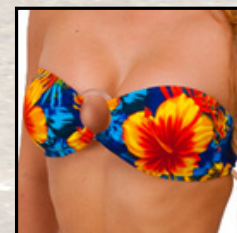
Tankini



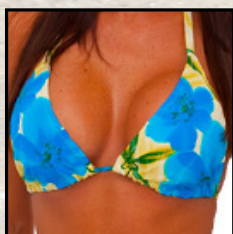
Halter



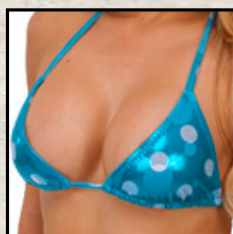
Underwire



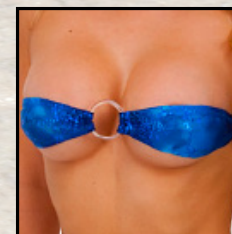
Bandeau



Shaped Triangle



Brazilian Triangle

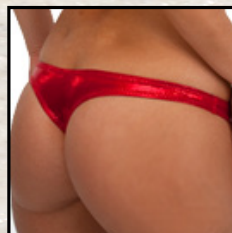


Micro Contest

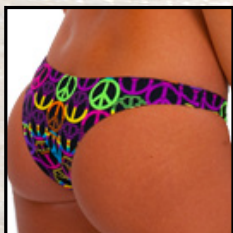
Women's Style Guide Rear View:



G-String
B1R - B34 - B37 - B50



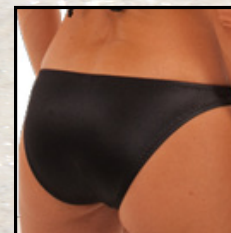
Thong
B51 - B61



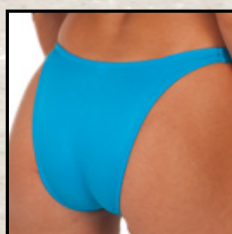
Low Rise Rio
B40 - B53 - B54



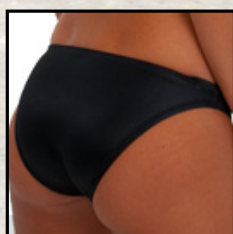
High Leg Rio
B7



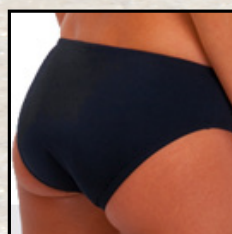
Low Rise Brazilian
B55 - B56 - B62



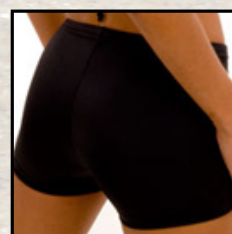
High Leg Brazilian
B8



Moderate
B11 - B57 - B58



Full Cut
B29 - B59 - B60



Shorts
B42 - B43

M62

To see all our M62's (Super Low Jammer) click here.

The M62 is an extremely low jammer style bike/swim short. A very small dart in the crotch provides comfort for a man, yet the front of the suit is smooth and seamless!

Comfortable, yet daringly low. All M62's are unlined.

For a more traditional jammer style bike/swim short, see the M50 or M51 on our website.

Read our codes : M62-0007

M62 = Style

all M62's are Unlined.

0007 = Fabric code

Order the M62 in ANY fabric from our special order department. Call 727-441-8789, or e-mail, skinz@skinzwear.com

Sizes : XS,S,M,L,XL and XXL.

Other sizes are special orders.

MORE CHOICES ONLINE

www.skinzwear.com

M62-0007 \$40
Suit is Unlined
Fabric = M-Tex Wet Look Black
Tricot® nylon/lycra®

M62-9409 \$40
Suit is Unlined
Fabric = Navy Blue
Tricot® nylon/lycra®

M62-9408 \$40
Suit is Unlined
Fabric = Semi-Sheer* Turquoise nylon/lycra® (very slinky feeling fabric)

**Note : Semi-Sheer* fabrics are some what revealing when dry. When this fabric gets wet, it's going to show quite a bit (sheer). Not appropriate for swimming at family beaches.*

M43U-0504 \$28
Suit is Unlined
Fabric = Semi-Sheer* Black nylon/lycra®

**Note : Semi-Sheer* fabrics are some what revealing when dry. When this fabric gets wet, it's going to show quite a bit (sheer). Not appropriate for swimming at family beaches.*

M43U-0210 \$28
Suit is Unlined
Fabric = Peace Signs
Tricot® nylon/lycra®

M43U-0003 \$28
Suit is Unlined
Fabric = M-Tex Wet Look Royal Blue
Tricot® nylon/lycra®

M43U-0501 \$28
Suit is Unlined
Fabric = White Lace* nylon/lycra®

**Note : Lace fabrics are some what revealing when dry. When this fabric gets wet, it's going to show quite a bit (sheer). Not appropriate for swimming at family beaches.*

M43

To see all our M43's
(NFS Boxer)
click here.

The M43 is our boxer style swim short with No Front Seam (NFS). The seamless front is smooth and eliminates the seam that often divides your package and makes things "uncomfortable". Designed with a man's comfort in mind.

This same style is also offered as gym short and/or underwear. See the A12.

Read our codes : M43U-6109

M43 = Style

U = Lining choice

6109 = Fabric Code

Order the M43 in ANY fabric from our special order department. Call 727-441-8789, or e-mail, skinz@skinzwear.com

Sizes : XS,S,M,L,XL and XXL.
Other sizes are special orders.

Special Order lining choices are :

U = Unlined

L = Lined in Front

M43U-6109 \$28
Suit is Unlined
Fabric = Red Web
Tricot® nylon/lycra®



M61U-0221 \$28
Suit is Unlined
Fabric = Purple Barbed Wire2
Tricot® nylon/lycra®



M61U-6407 \$28
Suit is Unlined
Fabric = Black Tricot® nylon/lycra®



M61U-7521 \$28
Suit is Unlined
Fabric = Black PowerNet*
nylon/lycra®

***Note: PowerNet® fabrics are some what revealing when dry. When this fabric gets wet, it's going to show quite a bit (sheer). Not appropriate for swimming at family beaches.**



M61U-7404 \$28
Suit is Unlined
Fabric = Key West Aqua
Tricot® nylon/lycra®

***Note: This version is unlined and this suit will be semi-see-thru when wet. May not be appropriate for family beaches.**



M61

To see all our M61's
(Aussie Brief)
click here.

This is an extremely low boxer style that bridges the gap between a swim brief and a swim boxer. A very small dart in the crotch provides comfort for a man, yet the front of the suit is smooth and seamless!

Comfortable, yet daringly low.

Read our codes : M61U-0212

M61 = Style

U = Lining choice

0212 = Fabric code

Order the M61 in ANY fabric from our special order department. Call 727-441-8789, or e-mail, skinz@skinzwear.com

Sizes : XS,S,M,L,XL and XXL.
Other sizes are special orders.

Special Order lining choices are :

U = Unlined

L = Lined in Front

M61U-0212 \$28
Suit is Unlined
Fabric = Panther River Rust
poly/nylon/lycra®

M64

To see all our M64's (Swim/Dive Brief) click here.

(NEW)

The M64 is a modern version of the competition swim & diver men's brief. Seamless front for smooth and fast water flow. Drawstring for security. Full front lining option for H.S. sport events.

Read our codes : M64L-0206
M64 = Style
L = Lining choice
0206 = Fabric code

Order the M64 in ANY fabric from our special order department. Call 727-441-8789, or e-mail, skinz@skinzwear.com

Sizes : XS,S,M,L,XL and XXL.
Other sizes are special orders.

Special Order lining choices are :
U = Unlined
L = Lined in front

M64L- 0206 \$28
Suit is Lined in Front
Fabric = Animal Fury Tricot nylon/lycra® (Drawstring Included)

M64L- 9409 \$28
Suit is Lined in Front
Fabric = Navy Blue Tricot nylon/lycra® (Drawstring Included)

M64L- 8116 \$28
Suit is Lined in Front
Fabric = Patriot Tricot nylon/lycra® (Drawstring Included)



M64L- 0008 \$28
Suit is Lined in Front
Fabric = M-Tex Wet Look Red Tricot nylon/lycra® (Drawstring Included)



M64L- 6407 \$28
Suit is Lined in Front
Fabric = Black Tricot nylon/lycra® (Drawstring Included)



M16P-0211 \$31
Suit has PEP lining*
Fabric = Panther River Blue nylon/lycra®
*Note : PEP (Performance Enhancing Panel) special lining has an elastic "O" ring that engages and "lifts" your package. There is no lining between you and the main fabric.



M16L- 8401 \$26
Suit is Lined in Front
Fabric = Purple Tricot nylon/lycra®



M16U- 0007 \$26
Suit is Unlined
Fabric =M-Tex Wet Look Black Tricot nylon/lycra®



M16U-0505 \$26
Suit is Unlined
Fabric = Semi-Sheer* Java nylon/lycra®
Note : Semi-Sheer fabrics are some what revealing when dry. When this fabric gets wet, it's going to show quite a bit (sheer). Not appropriate for swimming at family beaches.

M16

To see all our M16's
(Low Brief)
click here.



M26U-7114 \$26
Suit is Unlined
Fabric = Jungle Camo
poly/nylon/lycra®

MORE CHOICES ONLINE
www.skinzwear.com

M26

To see all our M26's
(Smooth Bikini)
click here.



M26U-0012 \$26
Suit is Unlined
Fabric = M-Tex Wet Look Navy Blue
Tricot® nylon/lycra®

The M26 has an almost seamless front with a small dart underneath for comfort and fit. Smooth seamless front pouch and a bikini (3/4's coverage) rear.

Read our codes : M26U-0219
M26 = Style
U = Lining choice
0219 = Fabric code

Order the M26 in ANY fabric from our special order department. Call 727-441-8789, or e-mail, skinz@skinzwear.com

Sizes : XS,S,M,L,XL and XXL.
Other sizes are special orders.

Special Order lining choices are :
U = Unlined
L = Lined in Front
PEP = Profile Enhancing Panel



M26U-9411 \$26
Suit is Unlined
Fabric = Semi-Sheer* Lipstick Red
nylon/lycra®

NOTE : Semi-Sheer fabrics are some what revealing when dry. When this fabric gets wet, it's going to show quite a bit (sheer). Not appropriate for swimming at family beaches.

M26U-0219 \$26
Suit is Unlined
Fabric = Turquoise Zebra
Tricot nylon/lycra®



M26U-9121 \$26
Suit is Unlined
Fabric = Acid Jazz Scarlet
poly/nylon/lycra®

The M16 is a modern version of the low cut men's brief. It is moderate in coverage. The suit has a full center seam in the front to give the pouch a perfectly contoured fit. Moderate rear coverage.

Read our codes : M16U-6406
M16 = Style
U = Lining choice
6406 = Fabric code

Order the M16 in ANY fabric from our special order department. Call 727-441-8789, or e-mail, skinz@skinzwear.com

Sizes : XS,S,M,L,XL and XXL.
Other sizes are special orders.

Special Order lining choices are :
U = Unlined
L = Lined in front
PEP = Profile Enhancing Panel

M16L- 6406 \$26
Suit is Lined in Front
Fabric = Matte Canary
Tricot nylon/lycra®

M63

To see all our M63's (Fitted Bikini) click here.

The **M63 - Fitted Bikini** has a pouch that is seamed for a profile hugging form fit. The back has the classic bikini coverage. This style is also used by bodybuilders for competition. More choices on-line @ www.skinzwear.com

Read our codes : M63L-0217

M63 = Style

L = Lining choice

0217 = Fabric code

Order any swimsuit in ANY fabric from our special order department. Call 727-441-8789, or e-mail, skinz@skinzwear.com

Sizes : XS,S,M,L,XL and XXL.
Other sizes are special orders.

Special Order lining choices are :

U = Unlined

L = Lined in front

PEP = Profile Enhancing Panel



M63L-0002 \$26
Suit is Lined in front
Fabric = M-Tex Wet Look Hot Pink
Tricot nylon/lycra®



M63L-0006 \$26
Suit is Lined in front
Fabric = M-Tex Wet Look Sunshine
Tricot nylon/lycra®



M63L-0009 \$26
Suit is Lined in front
Fabric = M-Tex Wet Look Purple
Tricot nylon/lycra®



M63P-0211 \$31
Suit has PEP lining *
Fabric = Panther River Blue
poly/nylon/lycra®

***Note : PEP (Performance Enhancing Panel) special lining has an elastic "O" ring that engages and "lifts" your package. There is no lining between you and the main fabric.**



M63U-7508 \$26
Suit is Unlined
Fabric = Metallic Ocean on
Turquoise Mesh* nylon/lycra®



***NOTE : PowerNet fabrics are some what revealing when dry. When this fabric gets wet, it's going to show quite a bit (sheer). Not appropriate for swimming at family beaches.**

M63U-7521 \$26
Suit is Unlined
Fabric = Black PowerNet* nylon/lycra®

*** NOTE : Mesh fabrics are some what revealing when dry. When this fabric gets wet, it's going to show quite a bit (sheer). Not appropriate for swimming at family beaches.**

M63L-0217 \$26
Suit is Lined in front
Fabric = Zebra
Tricot nylon/lycra®



M63L-0012 \$26
Suit is Lined in front
Fabric = M-Tex Wet Look Midnight Blue
Tricot nylon/lycra®



A14-7410 \$22
Split Short Cover-Up
Fabric = Royal Blue Tricot nylon/lycra®

**Fast Fact : lycra fabrics are printed in three different ways
Wet Prints : direct dye printing
Paper Prints : heat transfers from paper prints
Sublimation : heat/gas transfers from sublimation papers**



M54U-0007 \$26
Suit is Unlined
Fabric = M-Tex Wet Look Black
Tricot® nylon/Lycra



M54U-0221 \$26
Suit is Unlined in Front
Fabric = Barbed Wire2
Tricot® nylon/Lycra



M54P-0212 \$31
Suit has PEP lining *
Fabric = Panther River Rust nylon/Lycra®

***Note: PEP (Performance Enhancing Panel) Special lining has an elastic "O" ring that engages and "lifts" your package. There is no lining between you and the main fabric.**



M54L-0002 \$26
Suit is Lined in Front
Fabric = M-Tex Wet Look Hot Pink
Tricot® nylon/Lycra



M54L-0011 \$26
Suit is Lined in Front
Fabric = M-Tex Wet Look Turquoise
Tricot® nylon/Lycra



M54U-0502 \$26
Suit is Unlined
Fabric = Graphite PowerNet*

***NOTE: PowerNet fabrics are some what revealing when dry. When this fabric gets wet, it's going to show quite a bit (sheer). Not appropriate for swimming at family beaches.**



M54U-7501 \$26
Suit is Unlined
Fabric = Sheer Katmandu
Printed Mesh* nylon/Lycra®

***NOTE: Mesh fabrics are some what revealing when dry. When this fabric gets wet, it's going to show quite a bit (sheer). Not appropriate for swimming at family beaches.**



M54
To see all our M54's (Rio) click here.

The M54 is our modern generation of the classic men's Rio cut suit. Our suits are classified by the amount of coverage of the rear. The Rio denotes about half fanny coverage. The pouch area is smooth and seamless with a small dart underneath for comfort and fit. For a low volume pouch of the Rio style, see the M53.

Read our codes : M54L-0001
M54 = Style
L = Lining choice
0001 = Fabric code

Order the M54 in ANY fabric from our special order department. Call 727-441-8789, or e-mail, skinz@skinzwear.com

Sizes : XS,S,M,L,XL and XXL.
Other sizes are special orders.

Special Order lining choices are :
U = Unlined
L = Lined in front
PEP = Profile Enhancing Panel

M54L-0001 \$26
Suit is Lined in Front
Fabric = M-Tex Wet Look White Tricot® nylon/Lycra®



A14-5507 \$22
Split Short Cover Up
Fabric = Wavy Black Mesh
nylon/Lycra®



M27

To see all our M27's
(Skinny Side Rio)
click here.

The M27 front has a nearly invisible dart underneath for comfort and a smooth look. The skinny side strap connects the front to a "Rio" coverage rear (half-fanny). For a lower cut, see the M29. This year we improved the fit in the crotch. You will now see less wrinkling in that area. Year after year one of our more popular suits.

Read our codes : M27L-0221-6407
M27 = Style
L = Lining choice
0221-6407 = Fabric code

Order the M27 in ANY fabric from our special order department. Call 727-441-8789, or e-mail, skinz@skinzwear.com

Sizes : XS,S,M,L,XL and XXL.
Other sizes are special orders.

Special Order lining choices are :
U = Unlined
L = Lined in front
PEP = Profile Enhancing Panel

M27L-0221-6407 \$28
Suit is Lined in Front
Fabric = Purple Barbed Wire2
Tricot nylon/lycra®



M27L-8111 \$28
Suit is Lined in Front
Fabric = Sunshine Bali Lei
Tricot® nylon/lycra®



M27U-0205 \$28
Suit is Unlined
Fabric = Golden Hibiscus on Navy
Tricot® nylon/lycra®



M27U-9112 \$28
Suit is Unlined
Fabric = Whirl on Turquoise
Tricot® nylon/lycra®



M27U-0012 \$28
Suit is Unlined
Fabric = M-Tex Wet Look Midnight Blue
Tricot nylon/lycra®



M27U-9502 \$28
Suit is Unlined
Fabric = Semi-Sheer* Black-Silver
Velvet Burnout nylon/lycra®



M27U-0505 \$28
Suit is Unlined
Fabric = Semi-Sheer* Java nylon/lycra®

*** NOTE : Semi-Sheer* fabrics are some what revealing when dry. When this fabric gets wet, it's going to show quite a bit (sheer). Not appropriate for swimming at family beaches.**



M27U-9411 \$28
Suit is Unlined
Fabric = Semi-Sheer* Lipstick Red nylon/lycra®

*** NOTE : Semi-Sheer* fabrics are some what revealing when dry. When this fabric gets wet, it's going to show quite a bit (sheer). Not appropriate for swimming at family beaches.**



MORE CHOICES ONLINE
www.skinzwear.com

A14-9409 \$22
(split short coverup)
Fabric = Navy Blue Tricot® nylon/lycra®



M29
To see all our M29's
(Super Low Rio)
click here.

M29L-0201 \$28
Suit is Lined in Front
Fabric = Yellow Polka Dot Bikini
Tricot® nylon/lycra®



M29U-0007 \$28
Suit is Unlined
Fabric = M-TEX Wet Look Black
Tricot nylon/lycra®



M29L-1499-6407 \$28
Suit is Lined in Front
Fabric = White Tricot® nylon/lycra®
Straps = Black Tricot® nylon/lycra®



M29U-0008 \$28
Suit is Unlined
Fabric = M-TEX Wet Look Lipstick Red
Tricot nylon/lycra®



M29U-9410 \$28
Suit is Unlined
Fabric = Semi-Sheer* Dark Teal nylon/lycra®
(fabric has an iridescent sheen, sparkles in the sun)
***NOTE: Semi-Sheer* fabrics are somewhat revealing when dry. When this fabric gets wet, it's going to show quite a bit (sheer). Not appropriate for swimming at family beaches.**



M29U-8509 \$28
Suit is Unlined
Fabric = Nude PowerNet* nylon/lycra®

***NOTE: PowerNet fabrics are somewhat revealing when dry. When this fabric gets wet, it's going to show quite a bit (sheer). Not appropriate for swimming at family beaches.**

The M29 has undergone 4 generations to become one of our best selling suits. This suit is VERY LOW in the front and VERY LOW in the back. The front has a nearly invisible dart underneath for comfort and a smooth look. The skinny side strap connects the front to a "Rio" coverage rear (half-fanny). For a more standard cut, see the M27. This year we improved the fit in the crotch. You will now see less wrinkling in that area.

Read our codes : M29U-0210-7409
M29 = Style
U = Lining choice
0210-7409 = Fabric code

Order the M29 in ANY fabric from our special order department. Call 727-441-8789, or e-mail, skinz@skinzwear.com

Sizes : XS,S,M,L,XL and XXL.
Other sizes are special orders.

Special Order lining choices are :
U = Unlined
L = Lined in front
PEP = Profile Enhancing Panel



A14-0007 \$22
(split short coverup)
Fabric = M-TEX Wet Look Black
Tricot nylon/lycra®



M29U-0506 \$28
Suit is Unlined
Fabric = Semi-Sheer* Slate nylon/lycra®
***NOTE: Semi-Sheer* fabrics are somewhat revealing when dry. When this fabric gets wet, it's going to show quite a bit (sheer). Not appropriate for swimming at family beaches.**



M29U-0210-7409 \$28
Suit is Unlined
Fabric = Peace Sign Tricot® nylon/lycra®
Straps = Ocean Blue Tricot® nylon/lycra®

M57

To see all our M57's (Sunseeker Rio) click here.

The M57 is the ultimate tanning suit for those beaches where thongs are not allowed. Minimalist front seamed and contoured pouch that fits like a glove. The rear coverage is the smallest non thong suit we make. The M66 is a new version of the sunseeker with a more roomy pouch for the larger "package".

Read our codes : M57U-9121
 M57 = Style
 U = Lining choice
 9121 = Fabric code

Order the M57 in ANY fabric from our special order department. Call 727-441-8789, or e-mail, skinz@skinzwear.com

Sizes : XS,S,M,L,XL and XXL.
 Other sizes are special orders.

Special Order lining choices are :
 U = Unlined
 L = Lined in front
 PEP = Profile Enhancing Panel

MORE CHOICES ONLINE
www.skinzwear.com

M57U-9121 \$26
 Suit is Unlined
 Fabric = Acid Jazz Scarlet poly/nylon/lycra®



M57U-7410 \$26
 Suit is Unlined
 Fabric = Royal Blue Tricot nylon/lycra®



M57U-8501 \$26
 Suit is Unlined
 Fabric = Exotica Flame Printed Mesh* nylon/lycra®

*NOTE: Printed Mesh fabrics are some what revealing when dry. When this fabric gets wet, it's going to show quite a bit (sheer). Not appropriate for swimming at family beaches.



M57U-0007 \$26
 Suit is Unlined
 Fabric = M-Tex Wet Look Black Tricot nylon/lycra®



M57L-0217 \$26
 Suit is Lined in Front
 Fabric = Zebra Tricot® nylon/lycra®

M66

To see all our M66's (Sunseeker II) click here.

(NEW)



M66U-7802 \$26
 Suit is Unlined
 Fabric = Hot Pink Rubber powdercoat/nylon/lycra®

*Note: fabric looks and feels like rubber. Less stretch.



M66U-0012 \$26
 Suit is Unlined
 Fabric = M-Tex Wet Look Navy Blue Tricot nylon/lycra®



M66U-9411 \$26
 Suit is Unlined
 Fabric = Semi-Sheer* Lipstick Red nylon/lycra®



M66U-7519 \$26
 Suit is Unlined
 Fabric = White PowerNet* nylon/lycra®

*NOTE: PowerNet fabrics are some what revealing when dry. When this fabric gets wet, it's going to show quite a bit (sheer). Not appropriate for swimming at family beaches.

NOTE: Semi-Sheer fabrics are some what revealing when dry. When this fabric gets wet, it's going to show quite a bit (sheer). Not appropriate for swimming at family beaches.



M58L-0001 \$28
Suit is Lined in Front
Fabric - M-Tex Wet Look White
Tricot® nylon/lycra®



M58L-0005 \$28
Suit is Lined in Front
Fabric - M-Tex Wet Look Tangerine
Tricot® nylon/lycra®



For a higher volume
the M18 on

M58U- 7803 \$28
Suit is Unlined
Fabric = Metallic Royal Blue Rubber
Powdercoat nylon/lycra®
(less durable, save for special occasions)



pouch, check out
our website.

M58U-0007 \$28
Suit is Unlined
Fabric - M-Tex Wet Look Black
Tricot® nylon/lycra®



M58U- 9811 \$28
Suit is Unlined
Fabric = Metallic Mystique Volcano Red nylon/lycra®
(very shiny and durable)



M58U-9405 \$28
Suit is Unlined
Fabric - Semi-Sheer*
Key West Green
nylon/lycra®

NOTE: Semi-Sheer fabrics are somewhat revealing when dry. When this fabric gets wet, it's going to show quite a bit (sheer). Not appropriate for swimming at family beaches.



M58L-0201 \$28
Suit is Lined in Front
Fabric - Yellow Polka Dot Bikini
Tricot® nylon/lycra®



A14 - Split Short Cover Up
5500 - White Mesh \$22

A14
To see all our A14's
(Split Short Cover Up)
click here.

M58
To see all our M58's
(Packman Rio)
click here.

The M58 was a giant success story for us last year. A low volume form fitting pouch. A provocative low riding bun hugging seamed and fitted rear. Both of which are connected by a skinny side strap. Skimpy and form fitting both front & back.

For a higher volume pouch and slightly higher back, see the M18 (website only).

Read our codes : M58L-9819
M58 = Style
L = Lining choice
9819 = Fabric code

Order the M58 in ANY fabric from our special order department. Call 727-441-8789, or e-mail, skinz@skinzwear.com

Sizes : XS,S,M,L,XL and XXL.
Other sizes are special orders.

Special Order lining choices are :
U = Unlined
L = Lined in front

M58L- 9819 \$28
Suit is Lined in Front
Fabric = Metallic Mystique Bubblegum Pink
nylon/lycra® (very shiny and durable)



MEN'S THONGS

The M67 is an update to the classic men's swim thong (M45). We lowered the front. Full frontal seam to conform to the mans shape. Thong back.



(NEW)

M67

To see all our M67's
(Low Thong)
click here.

M67U- 9101 \$26
Suit is Unlined
Fabric = Money
poly/ nylon/lycra®



* NOTE : Wavy Mesh fabrics are some what revealing when dry. When this fabric gets wet, it's going to show quite a bit (sheer). Not appropriate for swimming at family beaches.

M67U-6508 \$26
Suit is Unlined
Fabric - Wavy Red Two-Tone Mesh*
nylon/lycra®



M67U- 0011 \$26
Suit is Unlined
Fabric = M-Tex Wet Look Turquoise
Tricot® nylon/lycra®

Read our codes : M67U-9101
M67 = Style
U = Lining choice
9110 = Fabric code

Order these suits in ANY fabric
from our special order
department. Call 727-441-8789,
or e-mail, skinz@skinzwear.com

Sizes : XS,S,M,L,XL and XXL.
Other sizes are special orders.

Special Order lining choices are :
U = Unlined
L = Lined in front
P = PEP lining
X = PRO Fleece/lycra® lining <M60 only>
(adds volume)

M32

To see all our M32's
(Hook Thong)
click here.

The M32 is the classic men's swim thong with "quick release" chrome or gold hook ornaments. Full frontal seam to conform to the mans shape. Thong back.



* NOTE : Stretch Lace fabrics are some what revealing when dry. When this fabric gets wet, it's going to show quite a bit (sheer). Not appropriate for swimming at family beaches.

M32U- 0501 \$28
Suit is unlined
Fabric : White Stretch Lace*
nylon/lycra® (gold hook)



M32U- 9820 \$28
Suit is unlined
Fabric : Metallic Mystique Kelly-Kelly
nylon/lycra® (gold hook)



M32U- 9811 \$28
Suit is unlined
Fabric : Metallic Mystique Volcano Red
nylon/lycra® (gold hook)

M60

To see all our M60's
(Dancer Thong)
click here.

The M60 was created for the professional dancer. Full and low hanging pouch that gives the illusion of length. Paired with the PRO lining you get a fullness and low "swing" weight for the "flopper" action. Thong back. For the pistol pouch version, see the M56.



M60X- 8806 \$28
PRO Lining
Fabric = Metallic Sapphire
on DNA Tricot® nylon/lycra®



M60X- 9809 \$28
PRO Lining
Fabric : Metallic Mystique Hawaii Mint
nylon/lycra®



M60X- 0007 \$28
PRO Lining
Fabric = M-Tex Wet Look Black
Tricot® nylon/lycra®

**NOTE: PRO Lining (X) is a soft light weight fleece/lycra® lining that fills and smoothes the pouch area. You will always look like you have a "full package". Not for swimming. A favorite of performers and exotic dancers.





M44U-0012 \$26
Suit is Unlined
Fabric = M-Tex Wet Look Midnight Blue
Tricot® nylon/lycra®



*NOTE : PowerNet fabrics are some what revealing when dry. When this fabric gets wet, it's going to show quite a bit (sheer). Not appropriate for swimming at family beaches.

M44U-0502 \$26
Suit is Unlined
Fabric = Graphite PowerNet®
nylon/lycra®

M44
To see all our M44's (Bravura Thong) click here.



M44U-6407 \$26
Suit is Unlined
Fabric = Black Tricot® nylon/lycra®



M44U-9818 \$26
Suit is Unlined
Fabric = Copper on Chocolate
Metallic Mystique nylon/lycra®

The M44 was our first thong to really cut away the excess fabric of the pouch and show off the man's form. The narrow pouch is seamed for a full contour (form) fit. Classic thong back.
This is a great suit for that full tan. The M65 adds two "gold/chrome" ornamental hooks for show.
For fuller pouched thongs, see the M32, M45 or M60.

Read our codes : M44U-0218
M44 = Style
U = Lining choice
0218 = Fabric code



M65
To see all our M65's (Bravura & Hooks) click here.
(NEW)

* NOTE : PowerNet fabrics are some what revealing when dry. When this fabric gets wet, it's going to show quite a bit (sheer). Not appropriate for swimming at family beaches.

M65U-9506 \$28
Suit is Unlined
Fabric = Sunshine PowerNet®
nylon/lycra® (gold hooks)



M65U-7803 \$28
Suit is Unlined
Fabric = Metallic Royal Blue Rubber
Powdercoat nylon/lycra® (chrome hooks)

*Note: This fabric looks and feels like skin tight rubber.

Order these suits in ANY fabric from our special order department. Call 727-441-8789, or e-mail, skinz@skinzwear.com
Sizes : XS,S,M,L,XL and XXL.
Other sizes are special orders.

Special Order lining choices are :
U = Unlined
L = Lined in front
PEP = Profile Enhancing Panel



A14-7517 \$22
(split short coverup)
Fabric = Metallic Tiger Copper
on Black Mesh nylon/lycra®

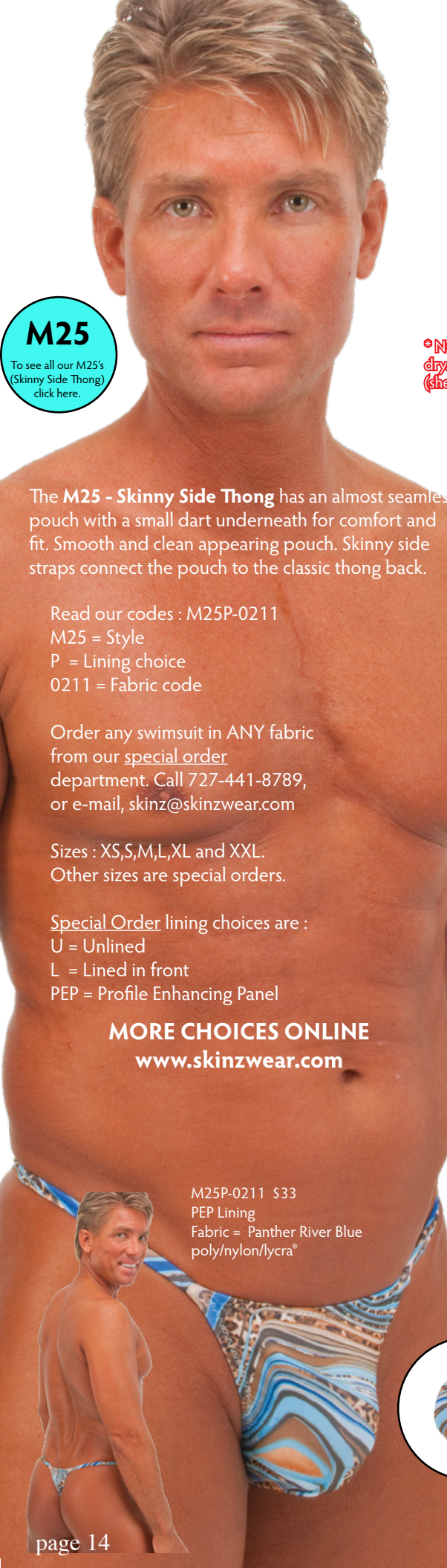


M65U-0007 \$28
Suit is Unlined
Fabric = M-Tex Wet Look Black
Tricot® nylon/lycra® (chrome hooks)



M44U-0218 \$26
Suit is Unlined
Fabric = Orange Zebra
Tricot® nylon/lycra®





M25

To see all our M25's (Skinny Side Thong) click here.

The **M25 - Skinny Side Thong** has an almost seamless pouch with a small dart underneath for comfort and fit. Smooth and clean appearing pouch. Skinny side straps connect the pouch to the classic thong back.

Read our codes : M25P-0211
M25 = Style
P = Lining choice
0211 = Fabric code

Order any swimsuit in ANY fabric from our special order department. Call 727-441-8789, or e-mail, skinz@skinzwear.com

Sizes : XS,S,M,L,XL and XXL.
Other sizes are special orders.

Special Order lining choices are :
U = Unlined
L = Lined in front
PEP = Profile Enhancing Panel

MORE CHOICES ONLINE
www.skinzwear.com

M25P-0211 \$33
PEP Lining
Fabric = Panther River Blue
poly/nylon/lycra®



M25U-0008 \$28
Suit is Unlined
Fabric = M-Text Wet Look Lipstick Red
Tricot® nylon/lycra®

***Note : PEP (Performance Enhancing Panel) special lining has an elastic "O" ring that engages and "lifts" your package. There is no lining between you and the main fabric.**

M49

To see all our M49's (Pistol Bikini) click here.



M25U-7523 \$28
Suit is Unlined
Fabric = Cobalt PowerNet*
nylon/lycra®

***NOTE : PowerNet fabrics are some what revealing when dry. When this fabric gets wet, it's going to show quite a bit (sheer). Not appropriate for swimming at family beaches.**



M25U-0007 \$28
Suit is Unlined
Fabric = M-Text Wet Look Black
Tricot® nylon/lycra®



M25L-9109 \$28
Suit is Lined in Front
Fabric = Acid Jazz Sunfire
poly/nylon/lycra®



M49U-0206 \$26
Suit is Unlined
Fabric = Animal Fury
Tricot® nylon/lycra®



M49U-9815 \$26
Suit is Unlined
Fabric = Metallic Mystique Berry Fuschia
nylon/lycra® (very shiny and durable)



M49U-9809 \$26
Suit is Unlined
Fabric = Metallic Mystique Hawaii Mint
nylon/lycra® (very shiny and durable)



M49U-5813 \$26
Suit is Unlined
Fabric = Liquid Silver (chrome)
Metallic nylon/lycra®



A14-7417 \$22
(Split Short coverup)
Fabric = Hot Pink
Tricot® nylon/lycra®



The **M49 - Pistol Bikini** pouch is a style unique to the SKINZ® line. Created as the ultimate "show piece" of the man's "package". The narrow holster design pushes all of you "up and out front". If you've got it, flaunt it. For a thong back version, see the M56.

We also offer a PRO lining for this suit. It is a soft light weight fleece/lycra® that fills and smooths the pouch area. You will always look like you have a "full package". Not for swimming.

A favorite of performers and exotic dancers.

Read our codes : M49U-5115-5106

M49 = Style

U = Lining choice

5115-5106 = Fabric code

Order any swimsuit in ANY fabric from our special order department. Call 727-441-8789, or e-mail, skinz@skinzwear.com

Sizes : XS,S,M,L,XL and XXL.

Other sizes are special orders.

Special Order lining choices are :

U = Unlined

L = Lined in front

X = PRO Fleece/lycra® lining (adds volume)



M49U-5115-5106 \$26
Suit is Unlined
Fabric = Stars on Navy Blue (front)
Fabric = Red & White Stripes (back)
nylon/lycra®



M46U-0009 \$28
Suit is Unlined
Fabric = M-Tex Wet Look Purple
Tricot nylon/lycra®



*** NOTE :** Stretch Lace fabrics are some what revealing when dry. When this fabric gets wet, it's going to show quite a bit (sheer). Not appropriate for swimming at family beaches.

M46U-0501-0001 \$28
Suit is Unlined
Fabric = White Stretch Lace*
nylon/lycra®
Straps = M-Tex Wet Look White



M46U-0508-0007 \$28
Suit is Unlined
Fabric = Black-Turquoise Printed Mesh*
nylon/lycra®
Straps = M-Tex Wet Look Black

*** NOTE :** Printed Mesh fabrics are some what revealing when dry. When this fabric gets wet, it's going to show quite a bit (sheer). Not appropriate for swimming at family beaches.



M46U-6407 \$28
Suit is Unlined
Fabric = Black
Tricot nylon/lycra®



M46
To see all our M46's (Roman G String) click here.

The **M46 - Roman G String** has an almost seamless pouch with a small dart underneath for comfort and fit. LOW VOLUME smooth pouch. Skinny side straps connect to the classic G string back. More choices on-line

www.skinzwear.com

Read our codes : M46U-9403-7409

M46 = Style

U = Lining choice

9403-7409 = Fabric code

Order any swimsuit in ANY fabric from our special order department. Call 727-441-8789, or e-mail, skinz@skinzwear.com

Sizes : XS,S,M,L,XL and XXL.

Other sizes are special orders.

Special Order lining choices are :

U = Unlined

L = Lined in front

M46U-9403-7409 \$28
Suit is Unlined
Fabric = Sheer Iridescent Turquoise*
nylon/lycra®
Straps = Turquoise Tricot® nylon/lycra®



*** NOTE :** Sheer fabrics are some what revealing when dry. When this fabric gets wet, it's going to show quite a bit (sheer). Not appropriate for swimming at family beaches.

M55

To see all our M55's (Stuffit G Strings) click here.



M55U-0011 \$28
Suit is Unlined
Fabric = M-Tex Wet Look Turquoise
Tricot nylon/lycra®
(silver tri-ring)

* NOTE : Sheer fabrics are some what revealing when dry. When this fabric gets wet, it's going to show quite a bit (sheer). Not appropriate for swimming at family beaches.



M55L-9413 \$28
Suit is Lined in front
Fabric = Firefly
Tricot nylon/lycra®
(gold tri-ring)

* NOTE : PowerNet fabrics are some what revealing when dry. When this fabric gets wet, it's going to show quite a bit (sheer). Not appropriate for swimming at family beaches.



M55U-9406 \$28
Suit is Unlined
Fabric = Sheer Iridescent Purple*
nylon/lycra®
(gold tri-ring)



M55U-7519 \$28
Suit is Unlined
Fabric = White PowerNet*
nylon/lycra®
(gold tri-ring)

* NOTE : Sheer fabrics are some what revealing when dry. When this fabric gets wet, it's going to show quite a bit (sheer). Not appropriate for swimming at family beaches.



* NOTE : Printed Mesh fabrics are some what revealing when dry. When this fabric gets wet, it's going to show quite a bit (sheer). Not appropriate for swimming at family beaches.



M55U-9411 \$28
Suit is Unlined
Fabric = Semi-Sheer Lipstick Red*
nylon/lycra®
(gold tri-ring)

M55U-0509 \$28
Suit is Unlined
Fabric = Royal & Turquoise Printed Mesh*
nylon/lycra®
(silver tri-ring)



M55U-0502 \$28
Suit is Unlined
Fabric = Graphite PowerNet*
nylon/lycra®
(silver tri-ring)

* NOTE : PowerNet fabrics are some what revealing when dry. When this fabric gets wet, it's going to show quite a bit (sheer). Not appropriate for swimming at family beaches.

M55L-0005 \$28
Suit is Lined in front
Fabric = M-Tex Wet Look Tangerine
Tricot nylon/lycra®
(gold tri-ring)



A14-1472 \$22
Split Short coverup
Fabric = Red nylon/lycra®

The M55 is another one of our low volume pouches with a full front seam for the "package" contour fit. Skinny straps connect at the back to a gold or silver tri-ring ornament. The ornament is classy and helps eliminate "string roll". For a seamless fuller pouch G String, see the M31.

Read our codes : M55L-0005
M55 = Style
L = Lining choice
0005 = Fabric code

Order the M55 in ANY fabric from our special order department. Call 727-441-8789, or e-mail, skinz@skinzwear.com

Sizes : XS,S,M,L,XL and XXL.
Other sizes are special orders.

Special Order lining choices are :
U = Unlined
L = Lined in front





M1R2U-9813 \$28
Suit is Unlined
Fabric = Metallic Mystique Pacific Blue nylon/lycra® (silver tri-ring)



M1R2U-0007 \$28
Suit is Unlined
Fabric = M-Tex Wet Look Black Tricot nylon/lycra® (silver tri-ring)



M1R2U-9121 \$28
Suit is Unlined
Fabric = Acid Jazz Scarlet poly/nylon/lycra® (gold tri-ring)



M1R2U-8108-0007 \$28
Suit is Unlined
Fabric = Blue Brush Strokes
Straps = M-Tex Wet Look Black
both fabrics are : Tricot nylon/lycra® (silver tri-ring)

M1R2
To see all our M1R2's (Micro G String) click here.

The M1R2 is our G string that allows adjustment to the pouch.
Want to make it skimpier and more narrow ? No problem. LOW VOLUME pouch. See the M1R on our website for a fuller pouch. Skinny straps connect at the back to a gold or silver tri-ring ornament. The ornament is classy and helps eliminate "string roll".

Read our codes : M1R2U-0201
M1R2 = Style
U = Lining choice
0201 = Fabric code

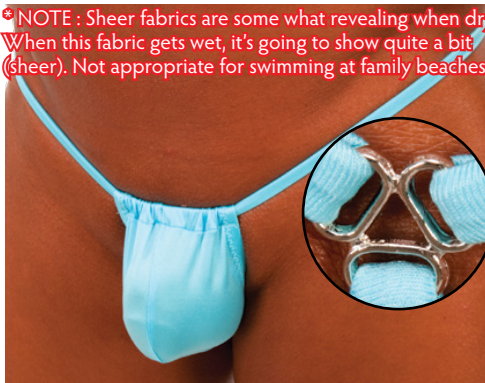
Order the M1R2 in ANY fabric from our special order department. Call 727-441-8789, or e-mail, skinz@skinzwear.com

Sizes : XS,S,M,L,XL and XXL.
Other sizes are special orders.

Special Order lining choices are :
U = Unlined
L = Lined in front

M1R2U-0201 \$28
Suit is Unlined
Fabric = Yellow Polka Dot Bikini Tricot® nylon/lycra® (gold tri-ring)

*NOTE : Sheer fabrics are some what revealing when dry. When this fabric gets wet, it's going to show quite a bit (sheer). Not appropriate for swimming at family beaches.



M1R2U-9408 \$28
Suit is Unlined
Fabric = Semi-Sheer* Turquoise nylon/lycra® (silver tri-ring)

*NOTE : Sheer fabrics are some what revealing when dry. When this fabric gets wet, it's going to show quite a bit (sheer). Not appropriate for swimming at family beaches.



M1R2U-9405 \$28
Suit is Unlined
Fabric = Semi-Sheer* Iridescent Key West Green nylon/lycra® (gold tri-ring)



M1R2U-0503-0001 \$28
Suit is Unlined
Fabric = Sheer* White Spider Lace nylon/lycra®
Fabric = M-Tex Wet Look White straps (gold tri-ring)

*NOTE : Sheer fabrics are some what revealing when dry. When this fabric gets wet, it's going to show quite a bit (sheer). Not appropriate for swimming at family beaches.

A14-6501 \$22
Split Short coverup
Fabric = Baby Blue Wavy Mesh nylon/lycra®





M52

To see all our M52's (Spartan G String) click here.

The M52 is another one of our low volume pouches with a full front seam for the "package" contour fit. This version has the minimalist "teardrop" pouch shape. Skinny straps connect together to form a "Y" back G string.

Read our codes : M52U-9406-0009
 M52 = Style
 U = Lining choice
 9406-0009 = Fabric code

Order the M52 in ANY fabric from our special order department. Call 727-441-8789, or e-mail, skinz@skinzwear.com

Sizes : XS,S,M,L,XL and XXL.
 Other sizes are special orders.

Special Order lining choices are :
 U = Unlined
 L = Lined in front

M52U-9406-0009 \$28
 Suit is Unlined
 Fabric - Sheer* Iridescent Purple nylon/Lycra
 Wet Look Purple Tricot* nylon/lycra straps.



* NOTE : Sheer fabrics are some what revealing when dry. When this fabric gets wet, it's going to show quite a bit (sheer). Not appropriate for swimming at family beaches.



* Note : Sheer fabrics are somewhat revealing when dry. When this fabric gets wet, it's going to show quite a bit (sheer). Not appropriate for swimming at family beaches

M52U-5504-7410 \$28
 Suit is Unlined
 Fabric - Sheer* Royal Blue Wavy Lace nylon/Lycra
 Royal Blue Tricot* nylon/lycra straps.

* NOTE : PowerNet fabrics are some what revealing when dry. When this fabric gets wet, it's going to show quite a bit (sheer). Not appropriate for swimming at family beaches.



M52U-8509 \$28
 Suit is Unlined
 Fabric - Nude PowerNet* nylon/lycra



M52U-0007 \$28
 Suit is Unlined
 Fabric - M-TEX Wet Look Black Tricot nylon/lycra



* NOTE : Sheer fabrics are some what revealing when dry. When this fabric gets wet, it's going to show quite a bit (sheer). Not appropriate for swimming at family beaches.

M52U-7504 \$28
 Suit is Unlined
 Fabric - Semi-Sheer* Dark Leopard nylon/lycra

A4 - Tights with 1 inch no roll elastic in the waist. These tights are sexy and...well...skin tight...duh ! Great in the gym, under wetsuits, cool weather biking, hiking and running.



To see all our A4's (Tights) click here.



A4M-0007 \$40
 Wet Look Black N/L

A4M-8301 \$40
 Blue Denim Cotton/Lycra



To see all our RG's (Rash Guard) click here.



RG-6407 \$30
 Black Tricot* nylon/lycra

RG2-9409 \$30
 Navy Blue Tricot* nylon/lycra

RG3-1499 \$30
 White Tricot* nylon/lycra

RG - Rash Guard Rash Guards were first developed by surfers to eliminate the chafing (caused by wetsuits) under the arms and around the neck. Coincidentally they do provide extra thermal warmth by reducing the flow of water inside the wetsuit (stabilizing warm water). Reversed seams for smoothness and dolman sleeves for freedom of movement.

RG2 - Athlete Rash Guard SS Snug, tight and short sleeve version of the RG. Perfect for Tri-athletes and swimmers who need protection from the sun, but also swim competitively.

RG3 - Athlete Rash Guard LS Snug, tight and long sleeve version of the RG. Perfect for Tri-athletes and swimmers who need protection from the sun, but also swim competitively.



To see all our G2's (Gym Tank) click here.



G2-8305 \$19
 Burgundy Cotton/Lycra

G2-8310 \$19
 Navy Cotton/Lycra

The **G2 - Gym String Tank** gym tee shirt. The length is short, and the hem-line rounded for comfortable use with gym shorts.

The **A12 - No Front Seam Shorts**. The most comfortable boxer shorts you will ever put on. (NFS*) No front seam to separate your package and force you to one side or the other. As underwear they are so comfortable, you don't know you have them on. Can also be worn in the gym.

M50 - Gym Jammer Bike length low rise shorts. Perfect for Tri-athletes, swimmers and the gym. Great compression short for all sports including: surfing, kite boarding and windsurfing.

M50

To see all our M50's (Gym Short) click here.



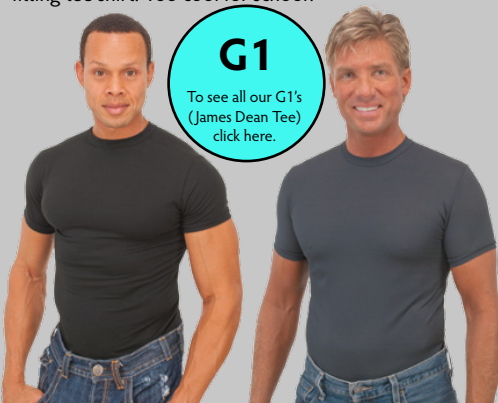
M50-9303 \$30
Black Denim Cotton/Lycra®

M50-8307 \$30
Black Cotton/Lycra®

The **G1 - Gym Muscle Tee**. The James Dean style, snug fitting tee shirt. Too cool for school!

G1

To see all our G1's (James Dean Tee) click here.



G1-8307 \$25
Black Cotton/Lycra®

G1-0502 \$25
Graphite PowerNet*

The **G20 - Sleeveless Muscle Tee**, the under armor snug and body contour fitting, sleeveless tee shirt. Many uses under sports uniforms, or as a go alone muscle tee. Great with jeans or casual shorts.

G20

To see all our G20's (Muscle Tank) click here.



G20-5507 \$22
Black Wavy Mesh N/L

G20-0506 \$22
Sheer Slate N/L

NOW ONLINE

- Silk Robes
- Silk G Strings
- Silk Thongs
- Silk Boxers
- Silk Pajamas

A12

To see all our A12's (NFS Short) click here.



A12-9301 \$22
Grey Driflex Microfiber

A12-9302 \$22
Baby Blue Driflex Microfiber

***NOTE:** Sheer fabrics are some what revealing when dry. When this fabric gets wet, it's going to show quite a bit (sheer). Not appropriate for swimming at family beaches.



M19-0504 \$20
(Unlined)
Fabric = Semi-Sheer* Black nylon/lycra®



M19-0800 \$20
(Unlined)
Fabric = Red Satin nylon/lycra®



M19-7811 \$20
(Unlined)
Fabric = Metallic Black Rubber powdercoat nylon/lycra® (looks and feels like rubber !)



M19-0501 \$20
(Unlined)
Fabric = White Stretch Lace* nylon/lycra®

***NOTE:** Stretch Lace fabrics are some what revealing when dry. When this fabric gets wet, it's going to show quite a bit (sheer). Not appropriate for swimming at family beaches.



M19-9502 \$20
(Unlined)
Fabric = Black-Silver Burnout* Velvet nylon/lycra®

***NOTE:** The burnout areas are some what revealing when dry. When this fabric gets wet, it's going to show quite a bit (sheer). Not appropriate for swimming at family beaches.

M19

To see all our M19's (Hot Shorts) click here.

A crossover short that has many uses. Great as a sexy swimsuit (unlined only), or, as underwear. Small waist elastic. No elastic in the leg holes. No visible underwear line when worn under pants. Not for diving or watersports. **UNLINED.**

*Note : Try this short in one of our cotton/lycra® fabrics as underwear (special order only).
Read our codes : M19-9813
M19 = Style
9813 = Fabric code

Order the M19 in ANY fabric from our special order department. Call 727-441-8789, or e-mail, skinz@skinzwear.com

Sizes : XS,S,M,L,XL and XXL.
Other sizes are special orders.

M19-9813 \$20
(Unlined)
Fabric = Metallic Mystique Pacific Blue nylon/lycra®. Shiny and durable.



More choices on-line, check : www.skinzwear.com safe and secure shopping protected by Starfield SSL

***Note : this is not a complete list of styles and fabrics, please visit our website for both full lists. We will make you any style in any fabric via our custom order department. Call : 727-441-8789 for details.**

Styles : men's swimwear :

code.....	style name.....	base price...	page
M1R2	Deepest g string	\$28.00	17
M16	Low brief	\$26.00	4
M19	Hot shorts	\$20.00	19
M25	Skinny side thong	\$28.00	14
M26	Smooth bikini	\$26.00	5
M27	Skinny side Rio	\$28.00	8
M29	Super low Rio	\$28.00	9
M32	Release thong	\$28.00	12
M43	NFS boxer	\$28.00	2
M44	Bravura thong	\$26.00	13
M46	Roman y thong	\$28.00	15
M49	Pistol bikini	\$26.00	14
M52	Spartan string thong	\$28.00	18
M54	Rio update	\$26.00	7
M55	Stuffit G String	\$28.00	16
M57	Sunseeker Rio	\$26.00	10
M58	Pacman Rio	\$28.00	11
M60	Dancer thong (flopper)	\$26.00	12
M61	Aussie Brief	\$28.00	3
M62	Extreme Jammers	\$40.00	2
M63	Posing Bikini	\$26.00	6
M64	Competition Swimmer Brief	\$28.00	4
M65	Bravura Hook Thong	\$28.00	13
M66	Sunseeker II	\$26.00	10
M67	Classic Thong (update)	\$26.00	12

Styles : women's swimwear : bottoms

B1R	Cutaway g string	\$29.00	22
B7	Skinny side Rio	\$29.00	26
B8	Brazilian (high leg)	\$29.00	28
B11	California moderate	\$29.00	28
B34	Micro micro g string	\$29.00	22
B37	Teardrop g string	\$29.00	23
B40	Aruba bikini	\$29.00	26
B50	Micro G string	\$29.00	22
B51	Low rise thong	\$29.00	23
B53	Low rise bun huggin Rio	\$29.00	25
B54	Low rise Rio	\$29.00	25
B55	Low rise Brazilian	\$29.00	27
B56	Low rise Brazilian side tie	\$29.00	28
B57	Low rise moderate	\$29.00	29
B58	Low rise moderate side tie	\$29.00	29
B59	Low rise full	\$29.00	29
B60	Boy cut full	\$29.00	29
B61	Booty thong	\$29.00	23
B62	Bun huggin Brazilian	\$29.00	27

Styles : women's swimwear : tops

T21	Brazilian triangle top	\$29.00	22,26
T34	Micro Triangle	\$29.00	22
T36	Teardrop Triangle	\$29.00	22,23
T37	BandAid Bandeau	\$29.00	22,23
T43	Shaped triangle top	\$29.00	26,28
T44	Halter Bandeau with Ring	\$29.00	26,27
T45	Halter Bandeau with String	\$29.00	website

Styles : women's swimwear : one-piece suits

F2	One piece Rio	\$60.00	24
F10	One piece thong	\$60.00	24
F11	Nikki	\$60.00	24

Styles : men's sport, street & gymwear

A4M	Tights	\$40.00	30
A11M	Low rise tights	\$40.00	30
A12	NFS gym shorts	\$22.00	19
A14	Cover up split-short	\$22.00	13,14,16
A18M	Capris (unisex)	\$30.00	website
A19M	Superlow tights	\$35.00	website
G1	Gym tee	\$25.00	19
G2	Gym tank	\$19.00	18
G20	muscle tank	\$20.00	19
RG	Rash Guard SS	\$30.00	18
RG1	Rash Guard (Wetsuit)	\$30.00	website
RG2	Athlete Rash Guard (SS)	\$30.00	18
RG3	Athlete Rash Guard (LS)	\$35.00	18
M50	Gym shorts	\$25.00	19

Styles : women's sport, gym & streetwear :

A4	Tights	\$40.00	18,30
A9	Hot pants	\$25.00	32
A11	Low rise tights	\$40.00	30
A18	Capris	\$30.00	website
A19	Superlow tights	\$40.00	website
A17	SusieQ short	\$22.00	23
C1	Catsuit	\$90.00	31
C1FZ	Catsuit with front zipper	\$90.00	31
C2	Halter style catsuit	\$80.00	31
C3	Buckle front catsuit	\$80.00	website
C4	Cami catsuit	\$80.00	31
D1	Tank mini dress	\$50.00	32
D6	Ring mini dress	\$60.00	32
D7	lace up dress	\$65.00	32
D8	Slip Dress	\$40.00	32
G21	Sleeveless Slashed Ming Top	\$24.00	32
G24	Ladies Tank Top	\$29.00	website
G25	Ladies Sport Tank Top	\$29.00	30
G26	Ladies Crop Tank Top	\$29.00	30
MMM	Slashed micro mini	\$29.00	website
MSD	Ming slashed dress	\$49.00	website
SMT	Slashed Ming top	\$29.00	website
S2	Sarong	\$19.00	website
S7	Micro Mini Skirt	\$22.00	25,28
S8	Layered Micro Mini Skirt	\$22.00	23,26

FABRICS : all nylon/lycra® except as noted

code.....fabric name.....pages

1459	Chartreuse tricot®	website
1472	Red tricot®	16
1499	Heavyweight white tricot®	9,18
1500	White stretch mesh	23
1502	Chartreuse stretch mesh	website
1506	Neon orange stretch mesh	website
1507	Black stretch mesh	26
1508	Red stretch mesh	website
2462	Hooters orange tricot®	website
5106	Red & white stripes tricot®	15,26
5115	White stars on navy tricot®	15,26
5500	Wavy white stretch mesh	11
5504	Wavy royal stretch mesh	18
5507	Wavy black stretch mesh	7,19
5807	Gloss black super stretch vinyl	30,31
5808	Gloss red super stretch vinyl	30
5812	Liquid gold	30,31
5813	Liquid silver	30,31
6109	Red web tricot®	2,3
6110	Lava tricot®	26
6406	Matte canary yellow tricot®	4,5
6407	Black tricot®	4,15
6501	Wavy baby blue stretch mesh	17
6508	Wavy red stretch mesh	12
7103	Desert camouflage	website
7111	Coco batik royal-kelly	website
7114	Jungle camouflage	5
7120	Black Philodendron	29
7404	Key West Aqua tricot®	3
7406	Coppertone tricot®	website
7407	Mango tricot®	4
7408	Peacock tricot®	22
7409	Ocean tricot®	15,18
7410	Royal blue tricot®	10,18
7411	matte neon orange tricot®	website
7417	hot pink tricot®	14
7501	Katmandu Printed Mesh*	7
7504	sheer dark leopard	18,23
7508	metallic tigre ocean foil on turquoise	6,6
7514	Sahara camouflage printed stretch mesh	website
7517	Metallic tigre copper foil on black mesh	13
7518	Metallic tigre ocean foil on black mesh	website
7519	White stretch PowerNet*	10,16
7521	Black stretch PowerNet*	3,6
7522	Merlot stretch PowerNet*	website
7523	Cobalt stretch PowerNet*	14
7802	Hot pink "rubber" powdercoat/lycra®	10
7803	Metallic royal "rubber" powdercoat/lycra®	30,31
7811	Black "rubber" powdercoat/lycra®	19,31
7812	Metallic turquoise "rubber"	22
8101	Propagation tricot®	website
8107	Midnight rainbow	website
8108	Blue brush strokes	17
8111	Bali lei (sunfire)	8,25
8112	Amber force field	18
8114	Ruby force field	website
8115	Amethyst force field	website
8116	Patriot	4
8125	Filmore East	website
8126	Sonic red	website
8127	Sonic blue	website
8129	Elegante Camouflage tricot®	29
8301	Blue Denim Cotton/Lycra®	18
8305	Burgundy Cotton/Lycra®	18
8307	Black Cotton/Lycra®	19
8310	Navy Cotton/Lyce®	18
8401	Shiny purple tricot®	4
8501	Exotica flame Printed Mesh*	10
8502	Exotica Amethyst Printed Mesh*	website
8503	Interstellar fire Printed Mesh*	10
8504	Interstellar Cobalt Printed Mesh*	website
8505	Hot in fluorescent velvet burnout mesh	website
8506	Cool in fluorescent velvet burnout mesh	website
8509	Nude PowerNet*	9,18
8803	Black satin	website
8806	Metallic Sapphire on DNA	22,23
9101	Money	12
9105	Indo Camo poly/lycra®	26
9108	Ribbed Deep Blue Sea	website
9109	Acid Jazz Sunfire poly/nylon/lycra	14
9112	Turquoise Whirl poly/nylon/lycra	2,8
9113	Greyscale Camo poly/nylon/lycra	18
9121	Acid Jazz Scarlet poly/lycra®	5,10
9301	Driflex Microfiber Grey	19
9302	Driflex Microfiber Baby Blue	19
9303	Black Denim cotton/lycra®	19
9403	Sheer Iridescent Dark Teal nylon/lycra®	15
9404	Sheer Iridescent Titanium nylon/lycra®	website
9405	Sheer Iridescent Key West Green N/L	11,17
9406	Sheer Iridescent Purple nylon/lycra®	16,18
9407	Sheer Iridescent Graphite nylon/lycra®	website
9408	Sheer Turquoise nylon/lycra®	2,10
9409	Navy Blue Tricot® nylon/lycra®	2,18
9410	Sheer Dark Teal nylon/lycra®	9
9411	Sheer Lipstick Red nylon/lycra®	8,10
9413	FireFly tricot/nylon/lycra®	16
9502	Velvet Burnout Black Silver	8,19
9503	Velvet Burnout Scarlet Ruby	website
9506	Sunshine PowerNet*	13
9801	White Satin/nylon/lycra®	website
9802	Crimson Metallic Wild Panther	website
9803	Metallic Purple "Rubber" powdercoat	24
9806	Malibu Metallic Dots White	website
9808	Metallic Scarlet on DNA	website

9809	Mystique Metallic Hawaii / Mint	14,22
9810	Mystique Metallic Black / Black	31,32
9811	Mystique Metallic Volcano Red	27,32
9812	Malibu Metallic Dots Turquoise	29
9813	Mystique Metallic Pacific Blue/ Royal	17,30
9814	Mystique Metallic Eggplant / Purple	25
9815	Mystique Metallic Berry / Fuchsia	14,32
9816	Mystique Metallic White / Silver	23,24
9817	Mystique Metallic Gold / Gold	website
9818	Mystique Metallic Chocolate / Copper	13,24
9819	Mystique Metallic Bubble Gum/BabyPink	22,32
9820	Mystique Metallic Kelly / Kelly	12,24
0001	M-Tex Wet Look White	11,22
0002	M-Tex Wet Look Hot Pink	6,26
0003	M-Tex Wet Look Royal Blue	6,7
0004	M-Tex Wet Look Coral	25,29
0005	M-Tex Wet Look Tangerine	23,27
0006	M-Tex Wet Look Sunshine	6,25
0007	M-Tex Wet Look Black	29,30,31
0008	M-Tex Wet Look Lipstick Red	4,28
0009	M-Tex Wet Look Purple	28
0010	M-Tex Wet Look Coppertone	11,18
0011	M-Tex Wet Look Turquoise	25,27
0012	M-Tex Wet Look Navy Blue	6,8
0013	M-Tex Wet Look Neon Chartreuse	6
0014	M-Tex Wet Look Neon Lime	website
0015	M-Tex Wet Look Neon Orange	website
0201	Teeny Weenie Yellow Polka Dot Bikini	17,29
0202	Turquoise Hibiscus	28,29
0203	Strawberry Hibiscus	25,28
0204	Golden Hibiscus-Brown	28
0205	Golden Hibiscus-Navy	8,27
0206	Animal Fury-Rust	4,27
0210	Peacesign	2,9
0211	Panther River Blue	4,29
0212	Panther River Rust	3,7
0217	Zebra nylon/lycra	6,25
0218	Orange Zebra nylon/lycra	4,13
0219	Turquoise Zebra nylon/lycra	5
0220	Digital Camo nylon/lycra	website
0221	Purple Barbed Wire2 Tricot® nylon/lycra	3,26
0501	White Lace* nylon/lycra® (Semi-Sheer*)	15,24
0502	Graphite PowerNet* nylon/lycra®	7,19
0503	White Spider Lace nylon/lycra®	17,24
0504	Sheer Midnight nylon/lycra®	2,19
0505	Sheer Java nylon/lycra®	4,8
0506	Sheer Slate nylon/lycra®	9,19
0507	Black Lace nylon/lycra® (Semi-Sheer*)	24
0508	Black-Turquoise Zebra Stretch mesh	15
0509	Royal-Turquoise Floral Stretch mesh	16
0510	Lime-Turquoise Tye Dye Stretch mesh	website
0800	Red satin/nylon/lycra®	19
0801	Champagne (Nude) satin/nylon/lycra	19
0804	Metallic Malibu Dots Red Silver N/L	28
0805	Metallic Malibu Dots White Red N/L	28

Mark your favorites here :

payment • special orders • returns

All prices in this catalog are in U.S. dollars. We accept : Visa, MasterCard, Discover, American Express, Pay Pal, money orders, bank wires, and checks. We run personal checks with street addresses through the Certegy check system for approval and immediate processing. Products must be returned within 30 days of purchase, for exchange or store credit only. You must call for a return authorization number. Items for exchange must be unused with tags attached and the return authorization number on the outside of the box. No refunds. All shipping and insurance charges will be paid by you. Special cut items are not returnable.

Our speciality is special and custom orders. You can order any of the items we make in any of the fabrics we have in-stock. Many of our customers get quite creative with color and print choices. Express yourself. It is quite common for customers to order items with no lining (even meshes and lace). Every time you order an item **your way** : in a special fabric, in a special size, without lining, with PEP* lining, or any other special requests, there will be an \$10.00 fee added to the base price of the item. It is well worth \$10.00 to get a suit handmade expressly for you. *Note : we have a secure custom order form on-line within our web-site, however, we suggest calling 727-441-8789 and talking to a real person about what you want. As you complete the order form below, add a \$10.00 *Special Charge* to any order of a non-standard item. Suits as they are **pictured in the paper catalog for 2010** are considered "standard". Please circle your lining choice : front lined, special PEP* lining (selected suits only) or front unlined.

SKINZ® shipping policies :

The prices (bottom right) can change if our shipping companies decide to raise prices after this catalog has been printed. Trust me, they won't be lowering prices. You can track your UPS (www.ups.com), USPS (www.usps.com) or FedEx (www.fedex.com) packages on-line. Send us an e-mail with your last name and zip code and we will send you your tracking number.

As a disclaimer (excuse), we make and sell swimwear. We are not a shipping company. We use UPS, FedEx and the U.S. Postal Service. If they screw up, yell at them, then let us know, with a kind attitude. We are always trying to upgrade the shipping companies we use. Do not wait until the last minute to place your order for your vacation. Plan on the shipping companies taking an extra day or two. They are people, too, and not always perfect.

International shipping starts at \$19.00 for an order of \$100 or less via U.S. International Priority to most countries. Sometimes we have to ship via U.S. First Class or Registered Air Mail. Faster, more expensive carriers are available. Call or e-mail us for more specific quotes. Our shipping charges include : the packaging material, the freight fee, the packaging labor, the paperwork labor, the travel to the postal centers and the wait at the postal centers. Be prepared to pay a minimum of \$35.00 for FedEx, UPS and DHL international services.

All duties and taxes are paid by the customer (this means you!)

Remember, we can't ship what we don't have, so if you need it quick, verify that it is in stock ! (727) 441-8789 or skinz@skinzwear.com. Our aim is to make the highest quality and finest fitting swimwear and workout wear. Our prices are reasonable. Our product is the very best you can buy, no matter how much money you have to spend. We have been doing this for over 20 years. Let us show you why our customers are our best sales people ! 2010

men's & women's sizing

men's (in inches) :

waist XXS* 21-23 XS 24-26 S 27-29 M 30-32 L 33-35 XL 36-40 XXL 41-44 XXXL* 45-48
 chest XS 34-35 S 36-38 M 39-40 L 41-42 XL 43-44 XXL 45-46

women's : (in inches)

skinz	xx-small*	small	medium	large	x-large	xx-large*
U.S.	(1-3)	(4-7)	(8-11)	(12-14)	(15-16)	(18-20)
bust	(27-29)	(31-32)	(34-35)	(37-38)	(40-41)	(43-45)
cup	(A)	(B)	(C)	(D)	(DD)	(E)
waist	(19-21)	(22-23)	(24-26)	(27-29)	(31-33)	(35-37)
hips	(29-31)	(32-34)	(35-37)	(38-40)	(41-43)	(45-47)
european	(29-31)	(34-36)	(38)	(40-42)	(44-46)	(48)

Please note : * not a stocked size. Not all fabrics behave the same. Wet look and stretch vinyl fabrics are less stretchy and may fit more snug. You may want to order a size larger. If you are confused about the sizing of an item, call 727-441-8789 or e-mail us at : skinz@skinzwear.com. You can always order your item in a non-stocked size for the \$10.00 special order fee.

check one :

- Ship 100% I'll wait 1-2 weeks for out of stock**
- Split Ship ship what you have now, ship the rest later, I'll pay both shipping charges**

page	style	color	2nd choice color	size	choose lining	special charges	total price
					lined PEP unlined		
					lined PEP unlined		
					lined PEP unlined		
					lined PEP unlined		
					lined PEP unlined		
					lined PEP unlined		
					lined PEP unlined		
					lined PEP unlined		

customer I.D. Number _____ from mailing label

name : _____ (please print)

street address : _____ apt # _____

city _____ state _____ zip _____

country _____ daytime Phone (_____) _____

home Phone (_____) _____ fax (_____) _____

e-mail address _____ @ _____

method of payment : charge card > debit card > money order > check >

charge card #: _____ - _____ - _____

expiration date : _____ security code : _____ what's this ???

signature _____ (please sign)

billing address (where your charge card bills are sent to) if different from shipping address above :

street _____

city _____

state _____ zip code _____

country _____

sub-total _____

calculated shipping _____

shipping up-grade _____

Saturday delivery up-grade _____

tax (Florida residents only) - 7% _____

total enclosed * _____

* Use the sub-total (above) and the chart (below) to calculate shipping charges. Add in any shipping upgrade charges to your order total. Florida residents must add in 7% sales tax to the total order (shipping included).

**SHIPPING RATE GUIDE
U.S., Puerto Rico, APO's & Canada**

\$0 - \$49.99	\$ 7.95
\$50 - \$99.99	\$10.95
\$100 - \$149.99	\$12.95
\$150 - \$200	\$14.95
over \$200	\$16.95

The 48 states will ship : FedEx, UPS, or USPS.
 Hawaii, Alaska, Puerto Rico, APO and P.O. Boxes will ship : U.S. Priority Mail.
 Canada will ship USPS.

Domestic Upgrades

to FedEx or UPS 2 day _____ add \$13.00
 to FedEx or UPS next day _____ add \$27.00
 FedEx/UPS Saturday* delivery _____ call

*Saturday upgrades not available to Canada, APO and P.O. Boxes.

International

International via U.S.Global priority _____ \$19.00 +
 International via UPS or FedEx _____ \$35.00 +

International rates vary by : size, weight and distance traveled.
 Call 727-441-8789 for specific prices.

SKINZ® is made in the U.S.A.
 shop online at : <http://www.skinzwear.com>
 727-441-8789 (voice) 727-442-2476 (fax)
 skinz@skinzwear (e-mail)

B1R

To see all our B1R's
(Adj G String)
click here.



Top : T21U-0007 \$29
Brazilian Triangle
(Unlined)
Bottom :
B1RU-0007 \$29
Adjustable G String (silver tri-ring)
(Unlined)
Fabric = M-Tex Wet Look Black
Tricot® nylon/lycra®

B34

To see all our B34's
(Micro G Stg Tie)
click here.



Top : T21U-9819 \$29
Brazilian Triangle
(Unlined)
Bottom :
B1RU-9819 \$29
Adjustable G String (gold tri-ring)
(Unlined)
Fabric = Metallic Mystique
Bubblegum nylon/lycra®



Top : T34U-0008 \$29
Micro Triangle
(Unlined)
Bottom :
B34U-0008 \$29
Micro G String (One Size)
(Unlined)
Fabric = M-Tex Wet Look Lipstick Red
Tricot® nylon/lycra®



Top : T21U-9809 \$29
Brazilian Triangle
(Unlined)
Bottom :
B34U-9809 \$29
Micro G String (One Size)
(Unlined)
Fabric = Metallic Mystique Hawaii Mint
nylon/lycra®

B50

To see all our B50's
(Micro G String)
click here.



Top : T21L-0002 \$29
Brazilian Triangle
(Lined in Front)
Bottom :
B50L-0002 \$29
G String (gold tri-ring)
(Lined in Front)
Fabric = M-Tex Wet Look Hot Pink
Tricot® nylon/lycra®



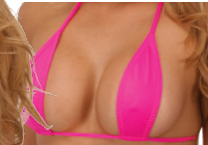
Top : T21L-0201 \$29
Brazilian Triangle
(Lined in Front)
Bottom :
B50L-0201 \$29
G String (gold tri-ring)
(Lined in Front)
Fabric = Yellow Polka Dot Bikini
Tricot® nylon/lycra®



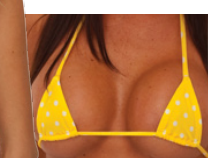
Top : T21U-7812-7408 \$29
Brazilian Triangle
(Unlined)
Bottom :
B50U-7812-7408 \$29
G String (silver tri-ring)
(Unlined)
Fabric = Metallic Turquoise Rubber
powdercoat nylon/lycra®



Optional Top :
T37U-8806 \$29
BandAid Bandeau
(One Size)



Optional Top :
T36U-0002 \$29
Teardrop Triangle
(One Size)



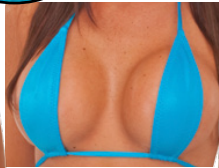
Optional Top :
T34U-0201 \$29
Micro Triangle
(One Size)



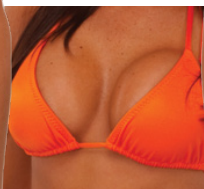
Top : T21U-8806 \$29
Brazilian Triangle
(Unlined)
Bottom :
B50U-8806 \$29
G String (silver tri-ring)
(Unlined)
Fabric = Metallic Sapphire on DNA
nylon/lycra®

B37

To see all our B37's (TearDrop G Stg) click here.



Optional Top :
T36U-0011 \$29
Tear Drop Triangle
(One Size)



Optional Top :
T21L-0005 \$29
Brazilian Triangle
(Lined in front)

B51

To see all our B51's (Low Rise Thong) click here.



NOTE : Semi-see-thru when wet. May not be appropriate for family beaches.

Top : T21U-7504 \$29
Brazilian Triangle
(Unlined)
Bottom :
B37U- 7504 \$29
TearDrop G String (gold tri-ring)
(Unlined)
Fabric = Semi Sheer Dark Leopard
Tricot® nylon/lycra®

Top : T21U-0011 \$29
Brazilian Triangle
(Unlined)
Bottom :
B37U- 0011 \$29
TearDrop G String (silver tri-ring)
(Unlined)
Fabric = M-TEX Wet Look Turquoise
Tricot® nylon/lycra®

Sizes : XS,S,M,L,and XL.

Other sizes are special orders.

Top : T37U- 0005 \$29
BandAid Bandeau
(Unlined)
Bottom :
B51L- 0005 \$29
Low Rise Thong
(Lined in Front)
Fabric = M-TEX Wet Look Tangerine
Tricot® nylon/lycra®

Top : T21U- 9811 \$29
Brazilian Triangle
(Unlined)
Bottom :
B51L- 9811 \$29
Low Rise Thong
(Lined in Front)
Fabric = Metallic Mystique
Volcano Red
nylon/lycra®

A17

To see all our A17's (Split Short Cover-Up) click here.



Top : T36U-8806 \$29
Tear Drop Triangle
(Unlined)
Bottom :
A17-7410 \$22
Split Short Cover-Up
Royal Blue nylon/lycra®

S8-1500 \$22
Layered Mini Skirt (NEW)
White Mesh
nylon/lycra®

S7-9811 \$22
CoverUp Mini Skirt (NEW)
Metallic Volcano Red
nylon/lycra®

Top : T21U- 0006 \$29
Brazilian Triangle
(Unlined)
Bottom :
B61L- 0006 \$29
Booty Thong (NEW)
(Lined in Front)
Fabric = M-TEX Wet Look Sunshine
Tricot® nylon/lycra®

Top : T21U- 7803 \$29
Brazilian Triangle
(Unlined)
Bottom :
B61U- 7803 \$29
Booty Thong (NEW)
(Unlined)
Fabric = Metallic Royal Blue Rubber
powdercoat nylon/lycra®

The three cover-ups on this page : A14 (Split Shorts), S7 (Mini Skirt) and S8 (Layered Skirt) can be ordered in any fabric to match the swimsuit you choose. Call 727-441-8789.

Note : Looks and feels like rubber. Save for special occasions.

(NEW)

B61

To see all our B61's (Booty Thong) click here.

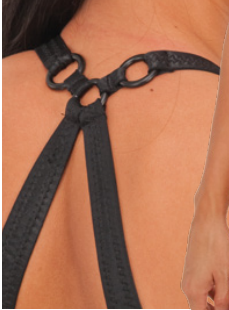
The **F2's**, **F10's** and **F11's** fit into the category of one piece swim suits. All are very sexy and accentuate the woman's best assets. Choose your weapon! We do have more conservative one piece swimsuits online, (**F4**, **F5** & **F6**). We also have some very wild one piece swimsuits for bikini contests on line. (**F7**, **F8** & **F13**).

F11

To see all our F11's (Nikki Malliot) click here.

F2

To see all our F2's (One Piece Rio) click here.



F11U-0007 \$60
One Piece Nikki maillot (Unlined)
Fabric = M-Tex Wet Look Black Tricot® nylon/lycra® (Black Rings)

F11U-9820 \$60
One Piece Nikki maillot (Unlined)
Fabric = Metallic Mystique Kelly-Kelly nylon/lycra (Black Rings)

F11U-9803 \$60
One Piece Nikki maillot (Unlined)
Fabric = Metallic Purple Rubber* powdercoat nylon/lycra®(Black Rings)

F2U-7803 \$60
One Piece Rio (Unlined)
Fabric = Metallic Royal Blue Rubber* powdercoat nylon/lycra® * looks and feels like rubber

More Choices Online
www.skinzwear.com

Sizes : XS,S,M,L,and XL.
Other sizes are special orders.

F10

To see all our F10's (One Piece Thongs) click here.

F2

To see all our F2's (One Piece Rio) click here.



F10CL-0501 \$60
One Piece Thong (Crotch lining)
Fabric = White Lace* nylon/lycra®

F10CL-0507 \$60
One Piece Thong (Crotch lining)
Fabric = Black Lace* nylon/lycra®

F10U-9811 \$60
One Piece Thong (Unlined)
Fabric = Metallic Mystique Volcano Red nylon/lycra®

F2U-7811 \$60
One Piece Rio (Unlined)
Fabric = Metallic Black Rubber* powdercoat nylon/lycra® * looks and feels like rubber

F2CL-0217 \$60
One Piece Rio (Crotch lining)
Fabric = Zebra Tricot® nylon/lycra®

***NOTE: Lace fabrics are somewhat revealing when dry. When this fabric gets wet, it's going to show quite a bit (sheer). Not appropriate for swimming at family beaches.**

B54

To see all our B54's
(Low Rise Rio)
click here.



S7-0001 \$22
Mini Skirt Cover-Up
Fabric = Wet White Tricot®
nylon/lycra®



Top : Brazilian Triangle
T21L-8111 \$29
Bottom : Low Rise Rio Cut
B54L- 8111 \$29
Suit Top & Bottom are (Lined in Front)
Fabric = Bali Lei Sunshine
Tricot® nylon/lycra®



Top : Shaped Triangle
T21L-0007 \$29
Bottom : Low Rise Rio Cut
B54L- 0007 \$29
Suit Top & Bottom are (Lined in Front)
Fabric = M-TEX Wet Look Black
Tricot® nylon/lycra®



Top : Shaped Brazilian Triangle
T43L-0203 \$29
Bottom : Low Rise Rio Cut
B54L- 0203 \$29
Suit Top & Bottom are (Lined in Front)
Fabric = Strawberry Hibiscus
Tricot® nylon/lycra®

RIO swimsuit bottoms cover about half the fanny, aka (half-back).

Sizes : XS,S,M,L, & XL Other sizes are special orders. We have more choices of both suits online.

B53

To see all our B53's
(Scrunchie Rio)
click here.



Scrunchie Bottom
Swimsuit



Scrunchie Bottom
Swimsuit



Pucker/Scrunchie
close-up



Scrunchie Bottom
Swimsuit



Scrunchie Bottom
Swimsuit

Top : Shaped Brazilian Triangle
T43L- 0217 \$29
Bottom : Low BunHuggin Rio
B53L-0217 \$29
Suit Top & Bottom are (Lined in Front)
Fabric = Zebra
Tricot® nylon/lycra®

Top : Ring Bandeau
T44L- 0011 \$29
Bottom : Low BunHuggin Rio
B53L- 0011 \$29
Suit Top & Bottom are (Lined in Front)
Fabric = M-TEX Wet Look Turquoise
Tricot® nylon/lycra®

Top : Brazilian Triangle
T21L- 0006 \$29
Bottom : Low BunHuggin Rio
B53L- 0006 \$29
Suit Top & Bottom are (Lined in Front)
Fabric = M-TEX Wet Look Sunshine
Tricot® nylon/lycra®

Top : Brazilian Triangle
T21L- 0004 \$29
Bottom : Low BunHuggin Rio
B53L- 0004 \$29
Suit Top & Bottom are (Lined in Front)
Fabric = M-TEX Wet Look Coral
Tricot® nylon/lycra®

B7

To see all our B7's
(Skinny Side Rio)
click here.



Top : Brazilian Triangle
T21L- 0210 \$29
(Lined in Front)
Bottom : High Leg Rio Cut
B7L- 0210 \$29
(Lined in Front)
Fabric = Peace Signs Tricot®
nylon/lycra®

S7-0002 \$22
Micro Mini Skirt
Fabric = Wet Look
Hot Pink
nylon/lycra®

Top : Brazilian Triangle
T21L- 0002 \$29
(Lined in Front)
Bottom : High Leg Rio Cut
B7L- 0002 \$29
(Lined in Front)
Fabric = M-Tex WetHot Pink
Tricot® nylon/lycra®

Top : Brazilian Triangle
T21L- 5115 \$29
(Lined in Front)
Bottom : High Leg Rio Cut
B7L- 5106 \$29
(Lined in Front)
Fabric = White Stars on Navy nylon/lycra®
Fabric = Red & White Stripes nylon/lycra®

Top : Brazilian Triangle
T21U- 0007 \$29
(Unlined)
Bottom : High Leg Rio Cut
B7L- 0007 \$29
(Lined in Front)
Fabric = M-Tex Wet Look Black
Tricot® nylon/lycra®

RIO swimsuit bottoms cover about half the fanny, aka (half-back).

Sizes : XS,S,M,L, & XL Other sizes are special orders. We have more choices of both suits online.

B40

To see all our B40's
(Low Rise Tie Rio)
click here.



S8-1507 \$22
Layered Skirt
Fabric= Black Stretch Mesh
nylon/lycra®

Top : Shaped Triangle
T43L-9105 \$29
Bottom : Ring Side Tie Rio
B40L- 9105 \$29
Suit Top & Bottom are (Lined in Front)
Fabric = Indo Camo
nylon/lycra®

Top : Brazilian Triangle
T21L-6110 \$29
Bottom : Ring Side Tie Rio
B40L- 6110 \$29
Suit Top & Bottom are (Lined in Front)
Fabric = Lava Tricot®
nylon/lycra®

Top : Ring Bandeau
T44L-0221 \$29
Bottom : Ring Side Tie Rio
B40L- 0221 \$29
Suit Top & Bottom are (Lined in Front)
Fabric = Barbed Wire2 Tricot®
nylon/lycra®

Brazilian swimsuit bottoms cover about 3/4's of the fanny, aka (bikini).
 Sizes : XS,S,M,L, & XL
 Other sizes are special orders.
 We have more choices of both suits online.

B55
 To see all our B55's (Low Brazilian) click here.



Top : Ring Bandeau
 T44L- 0205 \$29
 (Lined in Front)
 Bottom : Low Rise Brazilian
 B55L- 0205 \$29
 (Lined in Front)
 Fabric = Golden Hibiscus Navy
 Tricot® nylon/lycra®

S7-0007 \$22
 Mini Skirt CoverUp
 Fabric = Wet Black
 Tricot® nylon/lycra®

Top : Brazilian Triangle
 T21L- 0206 \$29
 (Lined in Front)
 Bottom : Low Rise Brazilian
 B55L- 0206 \$29
 (Lined in Front)
 Fabric = Animal Fury-Rust
 nylon/lycra®

Top : Brazilian Triangle
 T21L- 0011 \$29
 (Lined in Front)
 Bottom : Low Rise Brazilian
 B55L- 0011 \$29
 (Lined in Front)
 Fabric = M-TEX Wet Look Turquoise
 Tricot® nylon/lycra®

BRAZILIANS

B62
 To see all our B62's (Scrunchie Brazilian) click here.
(NEW)



Scrunchie Bottom Swimsuit

Scrunchie Bottom Swimsuit

Scrunchie Bottom Swimsuit

Scrunchie Bottom Swimsuit

Top : Brazilian Triangle
 T21L-9819 \$29
 Bottom : BunHuggin Brazilian (NEW)
 B62L- 9809 \$29
 Suit Top & Bottom are (Lined in Front)
 Fabric = Metallic Mystique Bubblegum N/L
 Fabric = Metallic Mystique Hawaii Mint N/L

Top : Brazilian Triangle
 T21L-0007 \$29
 Bottom : BunHuggin Brazilian (NEW)
 B62L- 0007 \$29
 Suit Top & Bottom are (Lined in Front)
 Fabric = M-TEX Wet Look Black
 Tricot® nylon/lycra®

Top : Brazilian Triangle
 T21L-0005 \$29
 Bottom : BunHuggin Brazilian (NEW)
 B62L- 0005 \$29
 Suit Top & Bottom are (Lined in Front)
 Fabric = M-TEX Wet Look Tangerine
 Tricot® nylon/lycra®

Top : Brazilian Triangle
 T21L-9819 \$29
 Bottom : BunHuggin Brazilian (NEW)
 B62L- 9819 \$29
 Suit Top & Bottom are (Lined in Front)
 Fabric = Metallic Mystique Bubblegum
 nylon/lycra®

B11

To see all our B11's
(Mod California)
click here.

**B8**

To see all our B8's
(HR Brazilian)
click here.



Top : Shaped Triangle
T43L-0009 \$29

Bottom : California Moderate

B11L- 0009 \$29

Suit Top & Bottom are (Lined in Front)

Fabric = M-Tex Wet Look Purple

Tricot® nylon/lycra®

Top : Ring Bandeau

T44L-0204 \$29

Bottom : California Moderate

B11L- 0204 \$29

Suit Top & Bottom are (Lined in Front)

Fabric = Golden Hibiscus on Chocolate

Tricot® nylon/lycra®

Top : Brazilian Triangle

T21L- 0205 \$29

(Lined in Front)

Bottom : High Leg Brazilian

B8L- 0205 \$29

(Lined in Front)

Fabric = Golden Hibiscus on

Navy Tricot® nylon/lycra®

Top : Brazilian Triangle

T21L- 0804 \$29

(Lined in Front)

Bottom : High Leg Brazilian

B8L- 0805 \$29

(Lined in Front)

Fabric = Malibu Silver Dots on Red

Tricot® nylon/lycra®

Top : Wonder Underwire

T8L- 6407 \$40

(Lined in Front)

Bottom : High Leg Brazilian

B8L- 6407 \$29

(Lined in Front)

Fabric = Black

Tricot® nylon/lycra®

B56

To see all our B56's
(LR Tie Brazilian)
click here.



Top : Shaped Triangle
T43L-0202 \$29

Bottom : Low Brazilian Side Tie

B56L- 0202 \$29

Suit Top & Bottom are (Lined in Front)

Fabric = Turquoise Hibiscus on Sunrise

Tricot® nylon/lycra®

D8-0202 \$40

Slip Dress (Unlined)

Fabric-Turquoise Hibiscus on Sunrise

Tricot® nylon/lycra®

Top : BrazilianTriangle

T21L-0007 \$29

Bottom : Low Brazilian Side Tie

B56L- 0007 \$29

Suit Top & Bottom are (Lined in Front)

Fabric = M-Tex Wet Look Black

Tricot® nylon/lycra®

Top : Shaped Triangle

T43L-0003 \$29

Bottom : Low Brazilian Side Tie

B56L- 0003 \$29

Suit Top & Bottom are (Lined in Front)

Fabric = M-Tex Wet Look Royal Blue

Tricot® nylon/lycra®

S7-9811 \$22

Mini Skirt CoverUp

Fabric = Mystique

Volcano Red

nylon/lycra®

B57
To see all our B57's (LR Moderate) click here.



B59
To see all our B59's (Low Rise Full) click here.



Top : Shaped Triangle
T43L-7120 \$29
Bottom : Low Moderate
B57L- 7120 \$29
Suit Top & Bottom are (Lined in Front)
Fabric = Black Philodendron
Tricot® nylon/lycra®

Top : Ring Bandeau
T44L-0007 \$29
Bottom : Low Moderate
B57L- 0007 \$29
Suit Top & Bottom are (Lined in Front)
Fabric = M-Tex Wet Look Black
Tricot® nylon/lycra®

Top : Shaped Triangle
T43L-0202 \$29
Bottom : Low Full
B59L- 0202 \$29
Suit Top & Bottom are (Lined in Front)
Fabric = Turquoise Hibiscus on Sunrise
Tricot® nylon/lycra®

Top : Halter Wonder Underwire
T9L-0211 \$40
Bottom : Low Full
B59L- 0211 \$29
Suit Top & Bottom are (Lined in Front)
Fabric = Panther River Blue
nylon/lycra®

MODERATE & FULL

Moderate swimsuit bottoms cover most of the fanny.
Sizes : XS,S,M,L, & XL Other sizes are special orders.

B58
To see all our B58's (Side Tie Moderate) click here.



B60
To see all our B60's (Boy Cut) click here.



Top : Brazilian Triangle
T21L-0201 \$29
Bottom : Low Moderate Side Tie
B58L- 0201 \$29
Suit Top & Bottom are (Lined in Front)
Fabric = Yellow Polka Dot Bikini
Tricot® nylon/lycra®

Top : Shaped Triangle
T43L-0004 \$29
Bottom : Low Moderate Side Tie
B58L- 0004 \$29
Suit Top & Bottom are (Lined in Front)
Fabric = M-Tex Wet Look Coral
Tricot® nylon/lycra®

Top : Full Cup Underwire
T12L-6407 \$40
Bottom : Boy Cut
B60L- 6407 \$29
Suit Top & Bottom are (Lined in Front)
Fabric = Black
Tricot® nylon/lycra®

Top : Shaped Triangle
T43L-8129 \$29
Bottom : Boy Cut
B60L- 8129 \$29
Suit Top & Bottom are (Lined in Front)
Fabric = Elegante Camouflage
Tricot® nylon/lycra®



A11
To see all our A11's (Low Tights) click here.



A4
To see all our A4's (Tights) click here.



G25U- 9810 \$29
Tank Top (Unlined)
A11- 9810 \$40
Low Rise Tights (Unlined)
Fabric = Metallic Mystique Black (nylon/lycra®) Shiny and Durable.

G10U- 9819 \$29
Baby Doll Crop Top (Unlined)
A11- 9819 \$40
Low Rise Tights (Unlined)
Fabric = Metallic Mystique Bubblegum (nylon/lycra®) Shiny and Durable.

T44U- 9813 \$29
Ring Bandeau (Unlined) **NEW !**
A11- 9813 \$40
Low Rise Tights (Unlined)
Fabric = Metallic Mystique Pacific Blue (nylon/lycra®) Shiny and Durable.

T11U- 5807 \$29
Fun & Sun Top (Unlined)
A4- 5807 \$40
Tights (Unlined)
Fabric = Black Superstretch (vinyl/nylon/lycra®)

G26U- 7803 \$29
Tank Top (Unlined)
A4- 7803 \$40
Tights (Unlined)
Fabric = Metallic Royal Blue Rubber* (powdercoat/nylon/lycra®)
* looks and feels like rubber

Sizes : XS, S, M, L and XL. Other sizes are special orders.

A4
To see all our A4's (Tights) click here.



T44U- 5808 \$29
Ring Bandeau (Unlined) **NEW !**
A4- 5808 \$40
Tights (Unlined)
Fabric = Red Superstretch (vinyl/nylon/lycra®)

G26U- 5812 \$29
Cropped Tank Top (Unlined)
A4- 5812 \$40
Tights (Unlined)
Fabric = Liquid Gold* (metallic nylon/lycra®)
* less durable, save for special occasions

G10U- 0007 \$29
Baby Doll Crop Top (Unlined)
A4- 0007 \$40
Tights (Unlined)
Fabric = M-TEX Wet Look Black (Tricot® nylon/lycra®)

T11U- 5813 \$29
Fun & Sun Top (Unlined)
A4- 5813 \$40
Tights (Unlined)
Fabric = Liquid Silver* (metallic nylon/lycra®)
* less durable, save for special occasions

C1

To see all our C1's (Catsuit) click here.



C1-0007 \$90
Catsuit (Unlined - invisible back zipper)
Fabric = M-Tex Wet Look Black nylon/lycra®



C1-5807 \$90
Catsuit (Unlined - invisible back zipper)
Fabric = Gloss Black Stretch Vinyl (nylon/lycra®) Super Shiny.



C1-5812 \$90
Catsuit (Unlined - invisible back zipper)
Fabric = Liquid Gold metallic nylon/lycra® less durable, save for special occasions



C1-5813 \$90
Catsuit (Unlined - invisible back zipper)
Fabric = Liquid Silver nylon/lycra® less durable, save for special occasions



C1-7803 \$90
Catsuit (Unlined - invisible back zipper)
Fabric = Metallic Royal Blue "Rubber" (powdercoat nylon/lycra®) looks and feels like rubber

More Choices Online
www.skinzwear.com

C1FZ

To see all our C1FZ's (Front Zip Catsuit) click here.



C1FZ-0007 \$90
Catsuit (Unlined - invisible front zipper)
Fabric = M-Tex Wet Look Black nylon/lycra®



C1FZ-7811 \$90
Catsuit (Unlined - invisible front zipper)
Fabric = Metallic Black "Rubber" (powdercoat nylon/lycra®) looks and feels like rubber

C2

To see all our C2's (Halter Catsuit) click here.



C2-0007 \$80
Halter Catsuit (Unlined - open back)
Fabric = M-Tex Wet Look Black nylon/lycra®

C4

To see all our C4's (CamiCat) click here.



C4-9810 \$80
Cami Cat Suit (Unlined)
Fabric = Mystique Metallic Black (nylon/lycra®)

skinzwear.com.inc
 2027 Gulf to Bay Blvd.
 Clearwater, Florida 33765
 *24 years in business
 www.skinzwear.com

Presorted Standard
 US Postage
 PAID
 Tampa FL
 Permit #8164

D1

To see all our D1's
 (Dresses)
 click here.



- D1- 5507 \$40 Tank Mini Dress (Unlined) Fabric = Black Wavy Mesh nylon/Lycra® **Note: Fabric is semi-see-thru. Great as a beach cover-up, or for wild parties.**
- D1- 9819 \$50 Tank Mini Dress (Unlined) Fabric = Metallic Mystique Bubblegum (nylon/Lycra®) Shiny and Durable.
- D1- 7803 \$50 Tank Mini Dress (Unlined) Fabric = Royal Blue "Rubber" (mylar laminate over metallic purple nylon/Lycra®)
- D1- 9815 \$50 Tank Mini Dress (Unlined) Fabric = Metallic Mystique Berry/Fuchsia (nylon/Lycra®) Shiny and Durable.
- D1- 5812 \$50 Tank Mini Dress (Unlined) Fabric = Liquid Gold metallic (nylon/Lycra®) Less Durable. save for special occasions
- D1- 5807 \$50 Tank Mini Dress (Unlined) Fabric = Black Superstretch vinyl/nylon/Lycra®

Sizes : XS, S, M, L and XL. Other sizes are special orders.

- G21-9810 \$24 Sleeveless Slashed Ming Top (Unlined)
- A9-9810 \$25 Hot Pants (Unlined) Fabric = Metallic Mystique Black nylon/Lycra® (shiny and durable)

- D7- 9811 \$65 Lace Up Dress (Unlined) Fabric = Metallic Mystique Volcano Red (nylon/Lycra®) Shiny and Durable.

- D6- 9810 \$60 Ring Dress (Unlined) Fabric = Metallic Mystique Black (nylon/Lycra®) Shiny and Durable.

- D8- 0205 \$40 Slip Dress (Unlined) Fabric = Golden Hibiscus on Navy (nylon/Lycra®)

D7

To see all our D7's
 (Lace Up Dress)
 click here.

D6

To see all our D6's
 (Ring Dress)
 click here.

D8

To see all our D8's
 (Slip Dress)
 click here.

