

# SKINZ<sup>®</sup>

2007



## M38...: Lowrider Boxer

The "Australian Cut" fitted boxer swimsuit. Four panel design. The front two panels insure a form fitting and comfortable profile. One inch elastic in the legs and waist make this a great (and secure) swimsuit for watersports.....in stock M38's are \$34

Stock sizes are XS thru XXL. All suits are nylon/lycra® except as noted. XXS and XXXL are custom order suits.

**M38U-6407/5507 \$34**  
**6407 - Black Tricot®/nylon/lycra®**  
**5507 - Black Wavy Stretch Mesh nylon/lycra®**



**M38U-7203 \$34**  
**7203 - Forest Crushed Ice Velvet nylon/lycra®**



**M38L-1459/6502 \$34**  
**1459 - Chartreuse Tricot®/nylon/lycra®**  
**6502 - Chartreuse Wavy Stretch Mesh nylon/lycra®**

pouch in front lined, unlined sides and back



**M38U-4007/3002 \$34**  
**4007 - Wet Look Black Tricot®/nylon/lycra®**  
**3002 - Wet Look Titanium Tricot®/nylon/lycra®**



**M38U-7202 \$34**  
**7202 - Lavender Sand Crushed Ice Velvet nylon/lycra®**



## M43...: NFS Boxer

The NFS means NO FRONT CENTER SEAM. The M43 uses one half inch waist elastic and NO elastic in the leg holes. This is the most comfortable swimsuit you will ever try on. Use the M43 as underwear ! .....in stock M43's are \$28

**M43U-7201 \$28**  
**7201 - Hot Lime Crushed Ice Velvet nylon/lycra®**  
 unlined



**M43U-7807 \$28**  
**7807 - Pearlized Black Reptile Stretch Leather vinyl/nylon/lycra®**



**M43U-6114 \$28**  
**6114 - Mocha Jungle Chamois nylon/lycra®**

unlined



**M43U-4007 \$28**  
**4007 - Wet Look Black Tricot®/nylon/lycra®**

unlined



**M43L-7113 \$28**  
**7113 - Marble Yellow/Black Tricot®/nylon/lycra®**

lined in front



## M16...: Low Brief

The M16 is our moderate cut low-rider, swim brief. It has a full frontal center seamer for a perfectly contoured fit. Moderate rear coverage.

Stock sizes are XS thru XXL.  
All suits are nylon/lycra®  
except as noted.  
XXS and XXXL are custom order suits.

### \* Profile Enhancing Panel (PEP)

A special panel with an elastic "O" ring that engages and "lifts" you. There is no lining between you and the main fabric. See close-ups.



**M16L-6107 \$26**

6107 - Nassau  
Tricot®/nylon/lycra®

lined in front

**M16U-6417 \$26**

6417 - Matte (no shine) Black  
Tricot®/nylon/lycra®

unlined

**M16P-6104 \$31**

6104- Deep Space Saturn  
Tricot®/nylon/lycra®

PEP lining

**M16P-5113 \$31**

5113 - Congo  
nylon/lycra®

PEP lining

## M36...: Riviera

The M36 is our competition swim brief. Drawstring waist closure for swimming and diving. Very low profile. Seamless front.



**M36L-5025 \$26**

5025 - Wet Look Neon Orange  
nylon/lycra®

lined in front

**M36U-4007 \$26**

4007 - Wet Look Black  
Tricot®/nylon/lycra®

unlined

**M36U-6113 \$26**

6113 - Lime Jungle stretch Chamois  
super soft nylon/lycra®

unlined

**M36U-1003 \$26**

1003 - Wet Look Royal Blue  
nylon/lycra®

unlined

## M50...: Bladerunner...: NEW

The M50 is our bike length swimshort. Olympic "jammer" style. Low waist front & back. New seamless front for comfort. All stock suits are **unlined**

**M50-7111 \$35**

7111- CoCo Batik Kelly/Royal poly/nylon/lycra®

**M50-7109 \$35**

7109- Matte (no shine) Molten Core  
Tricot®/nylon/lycra®

**M50-7812 \$35**

7812- Metallic Turquoise Rubber nylon/lycra®

**M50-7814 \$35**

7814- Superstretch Indigo vinyl/nylon/lycra®



M50-7111

M50-7109

M50-7812

M50-7814

## M51...: Bladerunner ds...: NEW

The M51 is our bike length swimshort with drawstring waistband. Olympic "jammer" style. Low waist front & back. New seamless front for comfort. All stock suits are **unlined**

**M51-3207 \$40**

3207- Inferno poly/nylon/lycra®

**M51-4007 \$40**

4007- Wet Look Black Tricot®/nylon/lycra®

**M51-5807 \$40**

5807- Superstretch Black vinyl/nylon/lycra®

**M51-7117 \$40**

7117- Swirl Tricot®/nylon/lycra®



M51-3207

M51-4007

M51-5807

M51-7117

# M9...: Fitted Bikini

The M9 has a front center seam to create the fully contoured fit. The man's form is comfortably profiled. The rear is the bikini (3/4's) coverage. For a seamless front, see the M26.

In stock M9's are \$26.  
With PEP\* lining, \$31.

Stock sizes are XS thru XXL. All suits are nylon/lycra® except as noted. XXS and XXXL are custom order suits.



**M9L-7115 \$26**  
7115 - Ion Orange poly/nylon/lycra®  
lined in front

**A14...: cover up short**  
The A14 is our unlined gym/running short style. A great cover-up for those edgy swim-suits we make. Order yours in a matching print, solid, or see-thru mesh.....\$19

**A14-6417 \$19**  
6417 -Matte Black nylon/lycra®  
unlined



**SKINZ**  
**Custom Services :**

- make suit in different fabric
- add or leave out lining
- add \*PEP lining
- order sizes XXS and XXXL

Please call 727-441-8789  
or e-mail :  
skinz@skinzwear.com

## \* Profile Enhancing Panel (PEP)

A special panel with an elastic "O" ring that engages and "lifts" you. There is no lining between you and the main fabric. See close-ups. All suits are nylon/lycra® except as noted. Some suits are : lined in front (M9L), unlined in front (M9U) or have included our \*PEP lining (M9P).

**M9P-6113 \$31**  
6113 - Lime Jungle Chamois (super-soft) nylon/lycra®  
**PEP lining**



The PEP effect !

**M9P-6109 \$31**  
6109 - Red Web Tricot®/nylon/lycra®  
**PEP lining**



The PEP effect !

**M9L-6133/1008 \$26**  
6133 - Mini Checkerboard nylon/lycra®  
1008 - Wet Look Red nylon/lycra®  
lined in front



**M9L-7412 \$26**  
7412 - Matte (no shine) Chartreuse Tricot®/nylon/lycra®  
lined in front



**M9U-5504/1003 \$26**  
5504 - Wavey Royal Blue stretch mesh nylon/lycra®  
1003 - Wet Look Royal Blue (side strap) nylon/lycra®  
unlined, semi-see-thru when dry see-thru when wet



**M9U-6417 \$26**  
6417 - Matte (no shine) Black Tricot®/nylon/lycra®  
unlined



**M9U-7812 \$26**  
7812 - Metallic Turquoise Rubber nylon/lycra®  
unlined



**\* Profile Enhancing Panel (PEP)**

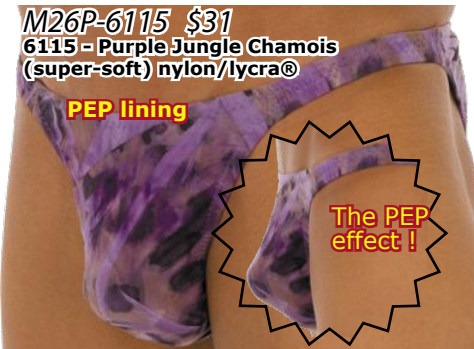
A special panel with an elastic "O" ring that engages and "lifts" you. There is no lining between you and the main fabric. See close-ups. All suits are nylon/lycra® except as noted. Some suits are : lined in front (M26L), unlined in front (M26U) or have included our \*PEP lining (M26P).

**M26...: Smooth Bikini**

The M26 is a combination of an almost seamless front, coupled with a bikini (3/4's) coverage rear. Classy !

In stock M26's are \$26. With PEP\* lining, \$31.

Stock sizes are XS thru XXL. All suits are nylon/lycra® except as noted. XXS and XXXL are custom order suits.



**SKINZ**  
**Custom Services :**

- make suit in different fabric
- add or leave out lining
- add \*PEP lining
- order sizes XXS and XXXL

Please call 727-441-8789 or e-mail : [skinz@skinzwear.com](mailto:skinz@skinzwear.com)



## M18...: Fitted Rio

The M18 continues to be a SKINZ® best seller. Center seamed in the front for a contoured form fitting pouch. Center seamed and gathered in the rear for a bun hugging "Rio" (half-back) fit. A skinny side strap connects the two explicit form fitting panels of this suit. ....in stock M18's are \$28.....with the \*PEP panel \$33.



**M18U-7813 \$28**  
7813 - Clearcoat Camo  
nylon/lycra®

unlined



**M18U-6803 \$28**  
6803 - Phosphorescent Turquoise  
nylon/lycra®

unlined



**M18U-7522 \$28**  
7522 - Merlot PowerNet nylon/lycra®

unlined, semi-see-thru when wet or dry



**M18L-6402 \$28**  
6402 - Matte (no shine) Apricot  
Tricot®/nylon/lycra®

lined in front



**M18P-6106 \$33**  
6106 - Matte (no shine) Breeze Blue Tye  
Dye nylon/lycra®

PEP panel

The  
PEP  
effect !



**M18U-3003 \$28**  
3003 - Wet Look Midnight Blue  
nylon/lycra®

unlined

No  
PEP !

### \* Profile Enhancing Panel (PEP)

A special panel with an elastic "O" ring that engages and "lifts" you. There is no lining between you and the main fabric. See close-ups. All suits are nylon/lycra® except as noted. Some suits are : lined in front (M18L), unlined in front (M18U) or have included our \*PEP lining (M18P).

## M49...: Performer Bikini :... NEW!

NEW ! Created as the ultimate "show piece". The pouch design is dedicated to pushing you "up and out". Narrow "holster" fit pushes all of you out front. Makes..."If you got it...buy the M49 and flaunt it" a real choice.....M49's are \$26.

Stock sizes are XS thru XXL. All suits are nylon/lycra® except as noted. XXS and XXXL are custom order suits.



**M49U-6805 \$26**  
6805 - Metallic Gold Mystique  
nylon/lycra®

unlined



**M49U-7810 \$26**  
7810 - Clearcoat Black  
nylon/lycra®

unlined



**M49U-7201 \$26**  
7201 - Hot Lime Crushed  
Ice Velvet nylon/lycra®

unlined



**M49U-7115 \$26**  
7115 - Ion Orange  
Tricot®/nylon/lycra®

unlined



**M49U-6108 \$26**  
6108 - Royal Web  
Tricot®/nylon/lycra®

unlined

## M33...: Banded Rio

The front has a nearly invisible small dart underneath for comfort and fit. The front and rear panels are connected by a contrasting band. Half back Rio coverage. In stock M33's are \$28.

M33 and M54 stock sizes are XS thru XXL. XXS and XXXL are custom order suits.

## More Choices On-Line!

Including see-thru mesh & lace suits.

www.skinzwear.com.



**M33L-6105/1459 \$28**  
6105 - Miami Sunset Tye Dye  
poly/nylon/lycra®  
1459 - Chartreuse  
Tricot®/nylon/lycra® Band

lined in front



**M33U-6108/4007 \$28**  
6108 - Royal Web Tricot®/nylon/lycra®  
4007 - Wet Look Black  
Tricot®/nylon/lycra® Band

unlined



**M33U-4007/1499 \$28**  
4007 - Wet Look Black Tricot®/nylon/lycra®  
1499 - White Tricot®/nylon/lycra® Band

unlined



**SKINZ**

### Custom Services :

- make suit in different fabric
- add or leave out lining
- add \*PEP lining
- order sizes XXS and XXXL

Please call 727-441-8789  
or e-mail :

skinz@skinzwear.com



**M33L-6117/4007 \$28**  
6117 - Red & White Plaid  
poly/nylon/lycra®  
4007 - Wet Look Black  
Tricot®/nylon/lycra® Band

lined in front

## M54...: Rio ...: M28 Update!

The M54 (new) is an update of the M28, our men's "Rio" swimsuit. The front has a nearly invisible small dart underneath for comfort and fit. The newly re-designed rear is now LOWER (to the top of the butt cleavage). In stock M54's are \$26. With \*PEP panel, \$31.



**M54P-7110 \$31**  
7110 - CoCo Batik Crimson/  
Yellow nylon/lycra®

PEP lining

A special panel with an elastic "O" ring that engages and "lifts" you. There is no lining between you and the main fabric. See close-ups. All suits are nylon/lycra® except as noted. Some suits are : lined in front (M33L, M54L), unlined in front (M33U, M54U) or have included our \*PEP lining (M54P).

## Profile Enhancing Panel (PEP)



**M54U-4007 \$26**  
4007 - Wet Look Black  
Tricot®/nylon/lycra®

unlined



**M54L-3002 \$26**  
3002 - Wet Look Titanium  
Tricot®/nylon/lycra®

lined in front



The PEP  
effect!



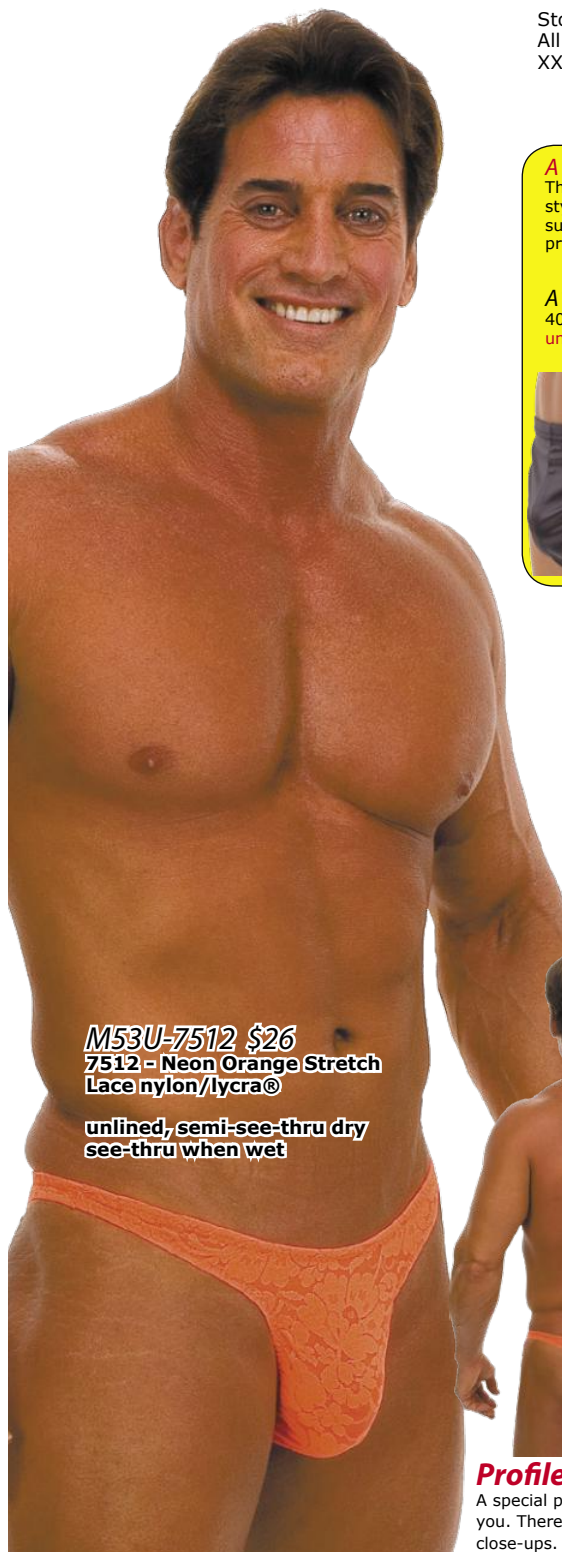
**M54U-7518 \$26**  
7518 - Metallic Tigre  
Blue Foil on Black  
mesh nylon/lycra®

unlined, semi-see-thru dry  
see-thru when wet

# M53...: CutAway Rio...: M21 update !

"Cutaway" means that excess fabric has been removed to leave a clean and smooth look with minimal coverage. Small dart underneath for comfort and fit. The "Rio" name denotes half coverage rear (half-back). We have scooped out some of the top waistline of the rear so that it just brushes the butt cleavage. In stock M53's are \$26, with PEP panel, \$31.

Stock sizes are XS thru XXL.  
All suits are nylon/lycra® except as noted.  
XXS and XXXL are custom order suits.



**M53U-7512 \$26**  
7512 - Neon Orange Stretch  
Lace nylon/lycra®

unlined, semi-see-thru dry  
see-thru when wet

### A14...: cover up short

The A14 is our unlined gym/running short style. A great cover-up for those edgy swim-suits we make. Order yours in a matching print, solid, or see-thru mesh.....\$19

### A14-4007 \$19

4007 - Wet Look Black nylon/lycra®  
unlined



## SKINZ

### Custom Services :

- make suit in different fabric
- add or leave out lining
- add \*PEP lining
- order sizes XXS and XXXL

Please call 727-441-8789  
or e-mail :  
skinz@skinzwear.com

### M53U-2516 \$26

2516 - Navy Blue Zipper Mesh nylon/lycra®

unlined, semi-see-thru dry,  
see-thru when wet



### M53U-7811 \$26

7811 - Black "Rubber" nylon/lycra®

unlined



### M53L-7114 \$26

7114 - Jungle Camo nylon/lycra®

lined in front



### M53U-7106 \$26

7106 - Scarlet Tartan Plaid  
poly/nylon/lycra®

unlined



### Profile Enhancing Panel (PEP)

A special panel with an elastic "O" ring that engages and "lifts" you. There is no lining between you and the main fabric. See close-ups. Some suits are : lined in front (M53L), unlined in front (M53U) or have included our \*PEP lining (M53P).

### M53L-6406 \$26

6406 - Matte (no shine)  
Canary Yellow  
Tricot®/nylon/lycra®

lined in front

No PEP !



### M53P-6107 \$31

6107 - Nassau Tricot®/nylon/lycra®

PEP lining

The PEP effect !



### M53P-7107 \$31

7107 - Atlantis  
Tricot®/nylon/lycra®

PEP lining

The PEP effect !





**\* Profile Enhancing Panel (PEP)**

A special panel with an elastic "O" ring that engages and "lifts" you. There is no lining between you and the main fabric. See close-ups. All suits are nylon/lycra® except as noted. Some suits are : lined in front (M27L), unlined in front (M27U) or have included our \*PEP lining (M27P).



**M27P-7101 \$33**  
7101 - Meltdown tricot® nylon/lycra®  
**\* PEP panel**



**M27L-1023 \$28**  
1023 - Wet Look Purple nylon/lycra®  
lined



**M27L-7406 \$28**  
7406 - Coppertone tricot® nylon/lycra®  
lined in front



**M27L-7809 \$28**  
7809 - Clearcoat\* White nylon/lycra®  
\* shiny and durable  
lined in front



**M27U-7116 \$28**  
7116 - Ion Blue  
poly/nylon/lycra®  
unlined



**A14...: cover up short**  
The A14 is our unlined gym/running short style. A great cover-up for those edgy swim-suits we make. Order yours in a matching print, solid, or see-thru mesh.....\$19  
  
**A14-6407 \$19**  
6407 -Black nylon/lycra®  
unlined

**SKINZ**  
**Custom Services :**

- make suit in different fabric
- add or leave out lining
- add \*PEP lining
- order sizes XXS and XXXL

Please call 727-441-8789  
or e-mail :  
[skinz@skinzwear.com](mailto:skinz@skinzwear.com)

**M27...: Skinny Side Rio**

The front has an almost invisible dart underneath for fit and comfort. Skinny side straps and "half-back" Rio coverage rear make this a popular suit. For a fuller pouch and a "fitted" rear, see the M18. For a lower overall "Rio" design, see the M29.

In stock M27's are \$28.  
With PEP\* lining, \$33

Stock sizes are  
XS thru XXL.  
All suits are  
nylon/lycra®  
except as noted.  
XXS and XXXL are  
custom order suits.



**M27U-7510 \$28**  
7510 - Hot Pink stretch Lace nylon/lycra®  
unlined, semi-see-thru when dry  
see-thru when wet



**M27U-7408 \$28**  
7408 - Peacock tricot® nylon/lycra®  
unlined



**M27U-7507 \$28**  
7507 - Metallic\* Tigre  
Lime Foil Mesh  
nylon/lycra®  
\*less durable,  
save for special occasions !  
unlined, semi-see-thru when dry  
see-thru when wet

# M29...: Super Low Rio

The M29 has undergone 3 generations to become our most popular suit. The staff has nicknamed this suit the "plumber". Very low in the front and very low in the back. If butt cleavage is your thing, this suit is for you! If you prefer the standard Rio rear profile, see the M27.

In stock M29's are \$28.

Stock sizes are XS thru XXL. All suits are nylon/lycra® except as noted. XXS and XXXL are custom order suits.



**M29U-3003 \$28**  
3003 - Wet Look Midnight Blue nylon/lycra®

unlined

**A14...: cover up short**  
The A14 is our unlined gym/running short style. A great cover-up for those edgy swim-suits we make. Order yours in a matching print, solid, or see-thru mesh.....\$19

**A14-5507 \$19**  
5507 -Wavey Black mesh/nylon/lycra®  
unlined

**SKINZ**  
**Custom Services :**

- make suit in different fabric
- add or leave out lining
- add \*PEP lining
- order sizes XXS and XXXL

Please call 727-441-8789  
or e-mail :  
skinz@skinzwear.com

**M29U-7514 \$28**  
7514 - Sahara Camouflage printed stretch mesh nylon/lycra®

unlined  
semi-see-thru when dry  
see-thru when wet

**M29U-7513 \$28**  
7513 - Neon Lemon stretch lace nylon/lycra®

unlined, semi-see-thru when dry  
see-thru when wet

**M29U-7808 \$28**  
7808 - Pearlized Candy Apple Red Stretch Reptile Leather vinyl/nylon/lycra®

unlined

**M29U-5507 \$28**  
5507 - Wavey Black Stretch Mesh nylon/lycra®

unlined, semi-see-thru when dry  
see-thru when wet

**M29L-7112 \$28**  
7112 - CoCo Batik Turquoise on Royal nylon/lycra®

lined in front

**M29U-4007 \$28**  
4007 - Wet Look Black tricot® nylon/lycra®

unlined

**M29U-7109 \$28**  
7109 - Matte Molten Core tricot® nylon/lycra®

unlined



**M45P-7102 \$31**  
**7102 - Genesis**  
 poly/nylon/lycra®

**PEP lining**



**The PEP effect!**



**M45P-6417 \$31**  
**6417 - Matte (no shine) Black**  
 Tricot®/nylon/lycra®

**PEP lining**



**The PEP effect!**



**M45P-6811 \$31**  
**6811 - Latte Stretch Chamois**  
 super-soft nylon/lycra®

**PEP lining**



**The PEP effect!**

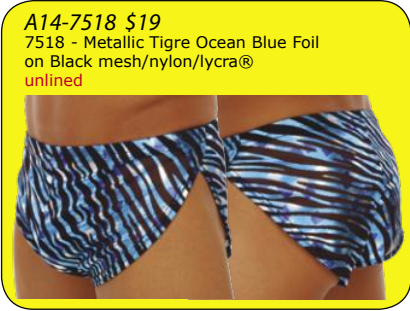
## M45...: Thong

The M45 has a center seam for that perfect contour fit. Classic thong back. In stock M45's are \$26. With \*PEP panel, \$31.

### Profile Enhancing Panel (PEP)

A special panel with an elastic "O" ring that engages and "lifts" you. There is no lining between you and the main fabric. See close-ups.

M32 and M45 stock sizes are XS thru XXL. XXS and XXXL are custom order suits. Some suits are : unlined (M32U) or have our \*PEP lining (M45P) included. Metallic and "Rubber" suits are less durable. Save for "special" occasions.



**A14-7518 \$19**  
 7518 - Metallic Tigre Ocean Blue Foil on Black mesh/nylon/lycra®  
 unlined



**M45P-1003 \$31**  
**1003 - Wet Look**  
 Royal Blue  
 nylon/lycra®

**PEP lining**



**The PEP effect!**

### Note!

The M45 may be special ordered without the PEP lining.

## M32...: Quick Release Thong

The front has a nearly invisible small dart underneath for comfort and fit. A gold or silver hook accessory gives this suit a unique look... and makes your exit...easy!  
 Classic thong back coverage. In stock M32's are \$28.

### More Choices On-Line!

Including see-thru mesh & lace suits.

[www.skinzwear.com](http://www.skinzwear.com)



**M32U-7803 \$28**  
**7803 - Metallic Blue**  
 "Rubber" nylon/lycra®

unlined, silver hook



**M32U-5812 \$28**  
**5812 - Liquid Gold**  
 Metallic nylon/lycra®

unlined, gold hook



**M32U-7811 \$28**  
**7811 - Black "Rubber"**  
 nylon/lycra®

unlined, silver hook



**M32U-4848 \$28**  
**4848 - Holographic Silver**  
 Shattered Glass nylon/lycra®

unlined, silver hook



Gold Hook



Silver Hook

## M25...: Skinny Side Thong

The M25 has a seamless and smooth front with a small dart underneath for comfort and fit. Skinny side straps connect the front to the classic thong rear.

In stock M25's are \$28.  
With PEP\* lining, \$33.

Stock sizes are XS thru XXL.  
All suits are nylon/lycra®  
except as noted.  
XXS and XXXL are custom order suits.

### \* Profile Enhancing Panel (PEP)

A special panel with an elastic "O" ring that engages and "lifts" you. There is no lining between you and the main fabric. See close-ups. All suits are nylon/lycra® except as noted. Some suits are : lined in front (M25L), unlined in front (M25U, M47U) or have included our \*PEP lining (M25P).



M25P-7109 \$33  
7109 - Matte (no shine) Molten Core  
Tricot®/nylon/lycra®

PEP lining

The PEP effect !

The PEP effect !

M25L-7412 \$28  
7412 - Matte (no shine)  
Neon Chartreuse nylon/lycra®

lined in front

M25U-6803 \$28  
6803 - Phosphorescent Turquoise  
nylon/lycra®

unlined

M25U-3003 \$28  
3003 - Wet Look Midnight Blue  
nylon/lycra®

unlined

M25P-7117 \$33  
7117 - Swirl Tricot®/nylon/lycra®

PEP lining

## M47...: Adjustable String Bikini ...: NEW!

The M47 (new) is a multi-use, multi style bikini. Combine a regular pouch, skimpy pouch, bikini rear or thong rear to suit your tastes.

In stock M47's are \$28.



M47U-4007 \$28  
4007 - Wet Look Black  
Tricot®/nylon/lycra®

unlined



M47U-7409 \$28  
7409 - Ocean Tricot®/nylon/lycra®

unlined

**SKINZ**  
Custom Services :

- make suit in different fabric
- add or leave out lining
- add \*PEP lining
- order sizes XXS and XXXL

Please call 727-441-8789  
or e-mail :  
skinz@skinzwear.com



M47U-7406 \$28  
7406 - Coppertone  
Tricot®/nylon/lycra®

unlined



# M44...: Bravura Thong

The ultimate tanning and show off swim thong. Narrow front (seamed for the perfect contour fit) coupled with the classic thong back.....In stock M44's are \$26.

Stock sizes are XS thru XXL.  
All suits are nylon/lycra®  
except as noted.  
XXS and XXXL are  
custom order suits.

**M44U-7803 \$26**  
7803 - Metallic\* Royal Blue  
Rubber nylon/lycra®  
\*less durable  
save for special occasions!

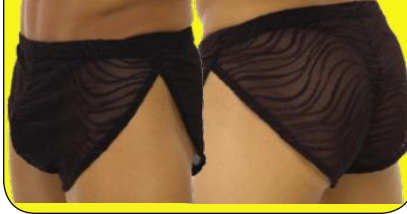
unlined



### A14...: cover up short

The A14 is our unlined gym/running short style. A great cover-up for those edgy swim-suits we make. Order yours in a matching print, solid, or see-thru mesh.....\$19

**A14-5507 \$19**  
5507 -Wavey Black mesh/nylon/lycra®  
unlined



**M44U-7505 \$26**  
7505 - Metallic\* Tigre Copper Foil  
Orange Mesh nylon/lycra®  
\* less durable, save for special occasions  
unlined, semi-see-thru when dry  
see-thru when wet



**SKINZ**

### Custom Services :

- make suit in different fabric
- add or leave out lining
- add \*PEP lining
- order sizes XXS and XXXL

Please call 727-441-8789  
or e-mail :  
skinz@skinzwear.com

**M44L-6112 \$26**  
6112 - Cool Brazilian Rhythm  
Tricot®/nylon/lycra®

lined in front



**M44U-7401 \$26**  
7401 - Espresso  
Tricot®/nylon/lycra®

unlined



**M44L-7113 \$26**  
7113 - Marble Yellow/Black  
Tricot®/nylon/lycra®

lined in front



**M44U-6109 \$26**  
6109 - Red Web  
Tricot®/nylon/lycra®

unlined



**M44U-3201 \$26**  
3201 - Blue Lightning  
Tricot®/nylon/lycra®

unlined



**M44U-4007 \$26**  
4007 - Wet Look Black  
Tricot®/nylon/lycra®

unlined



## M31...: Y Back Thong

Seamless front with a small dart underneath for comfort and fit. Minimal front pouch and low "Y" back thong design.

In stock M31's are \$28.  
With PEP\* lining, \$33

Stock sizes are XS  
thru XXL. All suits  
are nylon/lycra®  
except as noted.



**M31L-7110 \$28**  
7110 - CoCo Batik Grimson/Yellow  
poly/nylon/lycra®  
lined

## \* Profile Enhancing Panel (PEP)

A special panel with an elastic "O" ring that engages and "lifts" you. There is no lining between you and the main fabric. See close-ups. All suits are nylon/lycra® except as noted. Some suits are : lined in front (M31L), unlined in front (M31U) or have included our \*PEP lining (M31P).

## A14...: cover up short

The A14 is our unlined gym/running short style. A great cover-up for those edgy swimsuits we make. Order yours in a matching print, solid, or see-thru mesh. \$19

## A14-7518 \$19

7518 - Metallic Tigre Ocean Blue  
Foil on Black mesh/nylon/lycra®  
unlined



**SKINZ**

### Custom Services :

- make suit in different fabric
- add or leave out lining
- add \*PEP lining
- order sizes XXS and XXXL

Please call 727-441-8789  
or e-mail :  
skinz@skinzwear.com

**M31P-6104 \$33**  
6104 - Deep Space Saturn  
tricot®/nylon/lycra®  
\* PEP panel



**M31P-6417 \$33**  
6417 - Matte (no shine)  
Black tricot®/nylon/lycra®  
\* PEP panel



**M31P-6112 \$33**  
6112 - Cool Brazilian Rhythm  
tricot®/nylon/lycra®  
\* PEP panel



**M31U-5507/4007 \$28**  
5507 - Wavy Black mesh nylon/lycra®  
4007 - Wet Look Black nylon/lycra®  
unlined, semi-see-thru dry  
see- thru when wet



**M31U-7803/7410 \$28**  
7803 - Metallic Blue Rubber nylon/lycra®  
7410 - Royal Blue (side straps)  
tricot® nylon/lycra®  
unlined



**M31U-7519/7403 \$28**  
7519 - White PowerNet mesh nylon/lycra®  
7403 - Matte (no shine) Suntan nylon/lycra®  
unlined, semi-see-thru dry  
see-thru when wet



**M31U-1008/4007 \$28**  
1008 - Wet Look Red nylon/lycra®  
4007 - Wet Look Black nylon/lycra®  
unlined



## M1R...: Adjustable String Thong

The M1R is our string thong that allows adjustment to the front pouch.  
Want to make it skimpier and more narrow?...No problem! Barely there swim thong.

## M1R2...: Deepest String Thong

The M1R2 takes our M1R string thong to new depths.  
Adjustable Low...Low...pouch is 2 inches deeper than the M1R.  
In stock M1R's and M1R2's are \$28.

Stock sizes are XS thru XXL.  
All suits are nylon/lycra®  
except as noted.  
XXS and XXXL are custom order suits.

**Add a custom ornament!**

**M1R2U-6417 \$28**  
6417 - Matte (no shine) Tricot®/nylon/lycra®

unlined, silver tri-ring ornament



Substitute this Rhinestone Triangle for the silver or gold tri-ring for \$44  
...call 727-441-8789



Substitute this Rhinestone Sexy for the silver or gold tri-ring for \$44  
...call 727-441-8789



Substitute this Rhinestone Y for the silver or gold tri-ring for \$44  
...call 727-441-8789



**M1R2U-7802 \$28**  
7802 - Hot Pink Rubber nylon/lycra®  
\* less durable, save for special occasions!

unlined, gold tri-ring ornament



**M1R2U-7508 \$28**  
7508 - Metallic Tigre Blue Foil Turquoise mesh nylon/lycra®  
\* less durable  
save for special occasions!

unlined  
semi-see-thru  
when dry  
see-thru when wet  
silver tri-ring  
ornament



**M1R2U-7110 \$28**  
7110 - CoCo Batik Crimson/Yellow poly/nylon/lycra®

unlined  
gold tri-ring  
ornament



**M1RL-6506 \$28**  
6506 - Wavy Neon Orange mesh nylon/lycra®

lined in front, gold tri-ring ornament



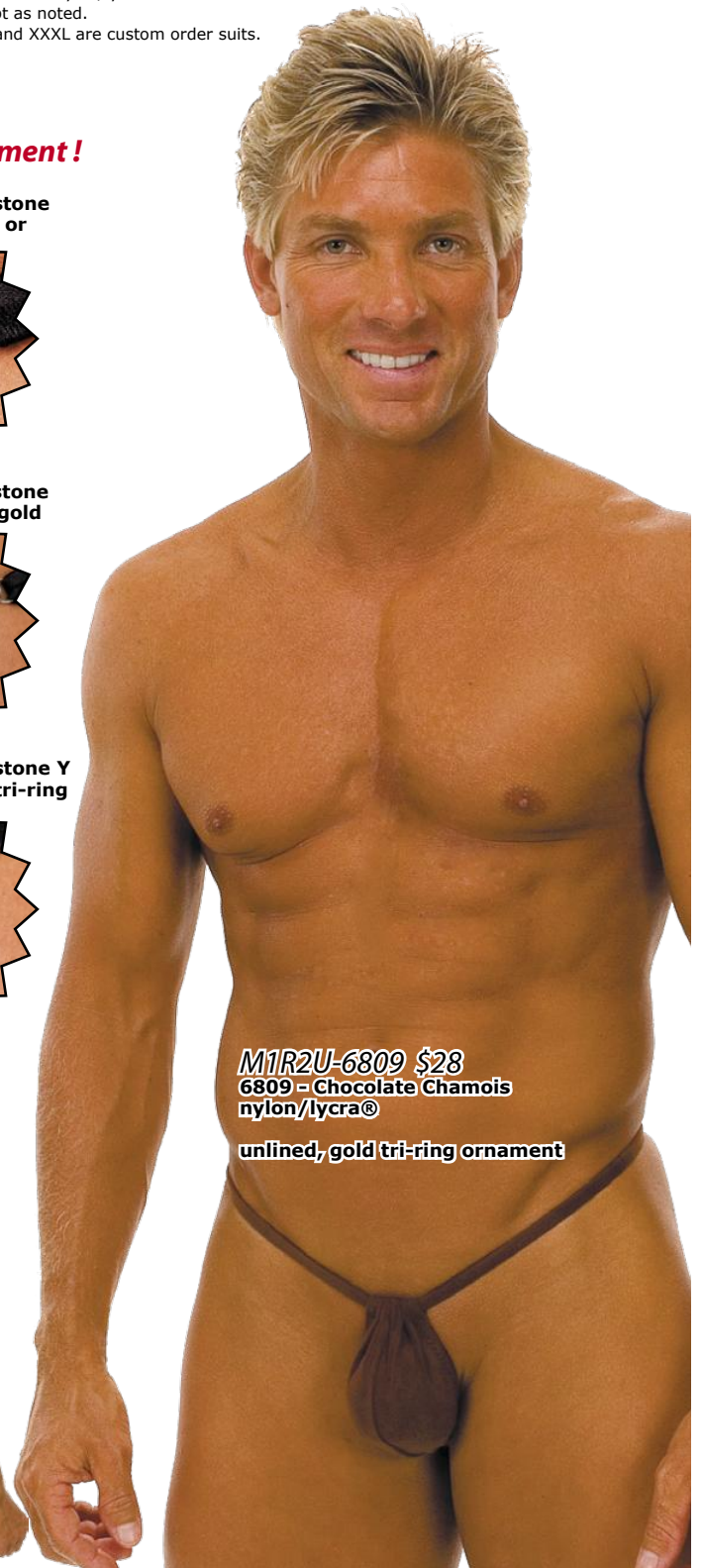
**M1RU-4007 \$28**  
4007 - Wet Look Black Tricot®/nylon/lycra®

unlined, silver tri-ring ornament



**M1RU-6108 \$28**  
6108 - Royal Web Tricot®/nylon/lycra®

unlined, silver tri-ring ornament



**M1R2U-6809 \$28**  
6809 - Chocolate Chamois nylon/lycra®

unlined, gold tri-ring ornament



## M48...: Sling Thong ...: NEW!

Over the shoulder sling thong. Walk on the wild side! **UNLINED**  
 stock sizes are XS thru XXL. XXS and XXXL are custom order suits.



**M48U-7811 \$30**  
 7811 - Black "Rubber"  
 nylon/lycra®

unlined

**M48U-5113 \$30**  
 5113 - Congo  
 nylon/lycra®

unlined

## M39...: Backless

Perfect for maximum sunning, or, as an underwear item. We make no claims  
 as to the legality of this as a swimsuit.

Black woven waistband.  
 (2) sizes : R (regular pouch) & L (large pouch).  
**Not for diving or watersports!** **UNLINED**



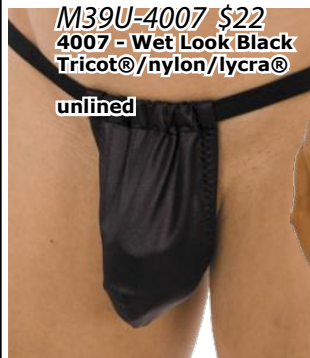
**M39U-7519 \$22**  
 7519 - White Stretch  
 Power.Net nylon/lycra®

unlined,  
 semi-see-thru dry  
 see-thru when wet



**M39U-7504 \$22**  
 7504 - Sheer Dark Leopard  
 nylon/lycra®

unlined  
 semi-see-thru when wet



**M39U-4007 \$22**  
 4007 - Wet Look Black  
 Tricot®/nylon/lycra®

unlined

## M52...: Spartan...: NEW!

String thong with fully contoured but minimum pouch. Comfortable low "Y"  
 back design. Perfect for maximum tanning. Stock sizes are XS thru XXL.  
 XXS and XXXL are custom order suits.



**M52L-7113 \$28**  
 7113 - Marble  
 Yellow/Black  
 Tricot®/nylon/lycra®

lined in front

**M52U-6108 \$28**  
 6108 - Royal Web  
 Tricot®/nylon/lycra®

unlined

**M52U-6407 \$28**  
 6407 - Black  
 Tricot®/nylon/lycra®

unlined

## M46...: Roman Thong

Seamless front with small dart underneath for comfort and fit. Skimpily pouch  
 with narrow top. Comfortable "Y" strap string thong.

Unique "clean" look and perfect fit.  
 Stock sizes are XS thru XXL.  
 XXS and XXXL are custom order suits.



**M46U-7523 \$28**  
 7523 - Cobalt PowerNet  
 nylon/lycra®

unlined  
 semi-see-thru dry see-thru when wet



**M46U-4007 \$28**  
 4007 - Wet Look Black  
 Tricot®/nylon/lycra®

unlined

**M46U-7101 \$28**  
 7101 - Meltdown  
 nylon/lycra®

unlined

**More Choices On-Line!**  
 Including see-thru mesh & lace suits.  
[www.skinzwear.com](http://www.skinzwear.com)



**A14...: Cover Up Short...: (unlined)**

Gym running short style. A great cover-up for those edgy swimsuits we make. Order yours in your favorite print, solid, mesh or lace. In stock colors : **4007-Wet Look Black**, **5507-Wavey Black Stretch Mesh**, **6114-Mocha Jungle Chamois**, **6417-Matte Black**, **7518 Metallic Tigre Blue Foil**, all contain nylon/lycra Sized XS thru XXL, XXS and XXXL custom orders.

**A16...: Kilt Thong...: NEW!**

Ok, we might be "out there" on this one. A cover-up of sorts for those wild parties. No...there is nothing underneath. In stock colors : **6116-Pink Plaid**, **6117-Red & White Plaid**, **7105-Royal Tartan Plaid**, **7106-Scarlet Tartan Plaid**, all poly/nylon/lycra® (3) Sizes : XS/S, M/L, XL/XXL

**M19...: Hot Short...: (unlined)**

A crossover short to be used as underwear or as a swimsuit ! No elastic in the legs or waist (except mesh M19's). Very comfortable under clothes with almost no visible underwear line. No diving or watersports ! In stock colors : **7202-LavenderSand Ice Velvet**, **7517-Metallic Tigre Copper Foil**, **7811-Black "Rubber"**, **7812-Metallic Turquoise "Rubber"**, **7815-Silver Satin**, **7816-Gold Satin**, all contain nylon/lycra®. Sized XS thru XXL, XXS and XXXL custom orders.

**M43S...: Slashed Boxer...: NEW! (unlined)**

M43, the "no front seam" boxer with sexy slashes down the sides. Walk on the wild side. **4403-Mint Peppermint Patty**, **6407-Black both Tricot®/nylon/lycra®** Sized XS thru XXL, XXS and XXXL custom orders.



**More Choices On-Line!**  
Including see-thru mesh & lace suits.

[www.skinzwear.com](http://www.skinzwear.com)



**SKINZ**  
**Custom Services :**

- make suit in different fabric
- add or leave out lining
- add \*PEP lining
- order sizes XXS and XXXL

Please call 727-441-8789  
or e-mail :  
[skinz@skinzwear.com](mailto:skinz@skinzwear.com)



**SKINZ® shipping policies :**

The prices (bottom right) can change if our shipping companies decide to raise prices after this catalog has been printed. Trust me, they won't be lowering prices. You can track your UPS (www.ups.com) or FedEx (www.fedex.com) packages on-line. Send us an e-mail with your last name and zip code and we will send you your tracking number.

As a disclaimer (excuse), we make and sell swimwear. We are not a shipping company. We use UPS, FedEx and the U.S. Postal Service. If they screw up, yell at them, then let us know, with a kind attitude. We are always trying to upgrade the shipping companies we use. Do not wait until the last minute to place your order for your vacation. Plan on the shipping companies taking an extra day or two. They are people, too, and not always perfect.

International shipping starts at \$18.00 for an order of \$100 or less via U.S. Global Priority to most countries. Sometimes we have to ship via U.S. Registered Air Mail. Faster, more expensive carriers are available. Call or e-mail us for more specific quotes. Our shipping charges include : the packaging material, the freight fee, the packaging labor, the paperwork labor, the travel to the postal centers and the wait at the postal centers. Be prepared to pay a minimum of \$30.00 for FedEx, UPS and DHL international services. All duties and taxes are paid by the customer (this means you!)

Remember, we can't ship what we don't have, so if you need it quick, verify that it is in stock ! (727) 441-8789 or skinz@skinzwear.com. Our aim is to make the highest quality and finest fitting swimwear and workout wear. Our prices are reasonable. Our product is the very best you can buy, no matter how much money you have to spend. We have been doing this for over 20 years. Let us show you why our customers are our best sales people ! 2007

**men's & women's sizing**

men's (in inches) :  
 waist XXS\* 21-23 XS 24-26 S 27-29 M 30-32 L 33-35 XL 36-40 XXL 41-44 XXXL\* 45-48  
 chest XS 34-35 S 36-38 M 39-40 L 41-42 XL 43-44 XXL 45-46

women's : (in inches)  
 skinz xx-small\* x-small small medium large x-large xx-large\*  
 U.S. (1-3) (4-7) (8-11) (12-14) (15-16) (18-20)  
 bust (27-29) (31-32) (34-35) (37-38) (40-41) (43-45) (46-48)  
 cup (A) (B) (C) (D) (DD) (E)  
 waist (19-21) (22-23) (24-26) (27-29) (31-33) (35-37) (38-40)  
 hips (29-31) (32-34) (35-37) (38-40) (41-43) (45-47) (48-50)  
 european (29-31) (34-36) (38) (40-42) (44-46) (48) (50)

Please note : \* not a stocked size. Not all fabrics behave the same. Wet look and stretch vinyl fabrics are less stretchy and may fit more snug. You may want to order a size larger. If you are confused about the sizing of an item, call 727-441-8789 or e-mail us at : skinz@skinzwear.com. You can always order your item in a non-stocked size for the \$8.00 special order fee.

**check one :**

**ship what you have, cancel the rest**

**ship 100%, I 'll wait !**

page	style	color	2nd choice color	size	choose lining	special charges	total price
					lined PEP unlined		
					lined PEP unlined		
					lined PEP unlined		
					lined PEP unlined		
					lined PEP unlined		
					lined PEP unlined		
					lined PEP unlined		
					lined PEP unlined		

PEP lining not available on all suits

sub-total \_\_\_\_\_

calculated shipping \_\_\_\_\_

shipping up-grade \_\_\_\_\_

Saturday delivery up-grade \_\_\_\_\_

tax (Florida residents only) - 7% \_\_\_\_\_

total enclosed \* \_\_\_\_\_

customer I.D. Number \_\_\_\_\_ from mailing label

name : \_\_\_\_\_ (please print)

street address : \_\_\_\_\_ apt # \_\_\_\_\_

city \_\_\_\_\_ state \_\_\_\_\_ zip \_\_\_\_\_

country \_\_\_\_\_ daytime Phone ( \_\_\_\_\_ ) \_\_\_\_\_

home Phone ( \_\_\_\_\_ ) \_\_\_\_\_ fax ( \_\_\_\_\_ ) \_\_\_\_\_

e-mail address \_\_\_\_\_ @ \_\_\_\_\_

method of payment : charge card >  debit card >  money order >  check >

\* Use the sub-total (above) and the chart (below) to calculate shipping charges. Add in any shipping upgrade charges to your order total. Florida residents must add in 7% sales tax to the total order (shipping included).

expiration date : \_\_\_\_\_ security code : \_\_\_\_\_ what's this ???

The security code is the 3 digit number inside the signature block on the back of your card. It is to prevent people from using stolen credit card numbers. If they don't have the card in their possession, they won't know this number. It is for your and our protection.

signature \_\_\_\_\_ (please sign)

**billing address (where your charge card bills are sent to) if different from shipping address above :**

street \_\_\_\_\_

city \_\_\_\_\_

state \_\_\_\_\_ zip code \_\_\_\_\_

country \_\_\_\_\_

**SHIPPING RATE GUIDE**  
**U.S., Puerto Rico, APO's & Canada**

\$0 - \$49.99	\$7.95
\$50 - \$99.99	\$9.95
\$100 - \$149.99	\$11.95
\$150 - \$200	\$13.95
over \$200	\$15.95

The 48 states will ship : FedEx, UPS, or USPS.  
 Hawaii, Alaska, Puerto Rico, APO and P.O. Boxes will ship :  
 U.S. Priority Mail. Canada will ship USPS.

**Domestic Upgrades**

to FedEx or UPS 2 day	add \$10.00
to FedEx or UPS next day	add \$20.00
FedEx/UPS Saturday* delivery	call

\*Saturday upgrades not available to Canada, APO and P.O. Boxes.

**International**

International via U.S.Global priority	\$18.00 +
International via UPS or FedEx	\$30.00 +

International rates vary by : size, weight and distance traveled.  
 Call 727-441-8789 for specific prices.

**SKINZ® is made in the U.S.A.**  
 shop online at : <http://www.skinzwear.com>  
 727-441-8789 (voice) 727-442-2476 (fax)  
 skinz@skinzwear (e-mail)

**B1R...: String Thong**

Adjustable front, string thong rear with silver or gold tri-ring ornament.

**B14S...: Rhinestone "Sexy"**

Adjustable front, string thong rear with rhinestone "sexy" ornament.

**B37...: Teardrop String Thong:...NEW!**

Skimpy front, string thong rear with silver or gold tri-ring ornament.

**T36...: Teardrop Triangle :...NEW!**

Symmetrical and narrow and skimpy version of the classic triangle top. **One size.**

Stock sizes are XS thru XL. All suits are nylon/lycra® except as noted. XXS and XXL are custom order suits.

**B14...: Rhinestone String Thong**

Adjustable front, string thong rear with rhinestone "Y" ornament.

**B14T...: Rhinestone "Delta"**

Adjustable front, string thong rear with rhinestone "triangle" ornament.

**T21...: Brazilian Triangle Top**

Asymmetrical and skimpy version of the classic triangle top.

**T37...: Band-aid Bandeau :...NEW!**

Narrow and skimpy version of the bandeau top with clear ring ornament. **One size. Unlined.**

**Add a custom ornament to any B1R!**

Substitute this Rhinestone Sexy for the silver or gold tri-ring for \$44  
...call 727-441-8789



Substitute this Rhinestone Triangle for the silver or gold tri-ring for \$44  
...call 727-441-8789



Substitute this Rhinestone Y for the silver or gold tri-ring for \$44  
...call 727-441-8789



T21-1008/4001/1003 \$26  
B1R-1003/1008 \$28  
1008 - Wet Look Red  
1003 - Wet Look Royal Blue  
4001 - Wet Look White  
All nylon/lycra®

lined in front silver tri-ring ornament

T21-5103 \$26  
B1R-5103 \$28  
5103 - Maui Pineapple poly/nylon/lycra®

lined in front gold tri-ring ornament

T36-5813/7815 \$26  
B1R-5813/7815 \$28  
5813 - Liquid Silver nylon/lycra®  
7815 - Silver Satin nylon/lycra® (strings)

lined in front silver tri-ring ornament



T21-4848/7815 \$26  
B14-4848/7815 \$36  
4848 - Holographic Silver Shattered Glass nylon/lycra®  
7815 - Silver Satin nylon/lycra® (strings)

lined in front rhinestone "Y" ornament

T21-4804/4007 \$26  
B14S-4804/4007 \$36  
4804 - Holographic Red Shattered Glass nylon/lycra®  
4007 - Wet Look Black (strings)

lined in front rhinestone "sexy" ornament

T21-7115 \$26  
B14T-7115 \$36  
7115 - Ion Orange poly/nylon/lycra®

lined in front rhinestone triangle ornament

T36-5812/CC \$26  
B37-5812/CC \$28  
5812 - Liquid Gold nylon/lycra®  
CC - Clear Cord strings (Stretch Magic®)

lined in front gold tri-ring ornament

T37U-7802 \$26  
B37-7802 \$28  
7802 - Hot Pink "Rubber" nylon/lycra®  
7417 - Hot Pink Tricot®/nylon/lycra® (strings)

unlined gold tri-ring ornament

## B4...: Swim Thong

The classic women's swimsuit thong.

## B24...: Release Thong

The classic women's swimsuit thong with a quick release gold or silver hook ornament.

B4, B24 and T21 stock sizes are XS thru XL.  
XXS and XXL are custom order suits.  
All suits are nylon/lycra®  
except as noted.

## T21...: Brazilian Triangle Top

Asymmetrical and skimpy version of the classic triangle top.

## T37...: Band-aid Bandeau...NEW!

Narrow and skimpy version of the bandeau top with clear ring ornament. **One size. Unlined.**

## T36...: Teardrop Triangle Top...NEW!

Symmetrical, narrow and skimpy version of the classic triangle top. **One size. Unlined.**



T21-6107 \$26  
B4-6107 \$26  
6107 - Nassau  
Tricot®/nylon/lycra®

lined in front

T21-4007 \$26  
B4-4007 \$26  
4007 - Wet Look Black  
Tricot®/nylon/lycra®

lined in front

T21-7114 \$26  
B4-7114 \$26  
7114 - Jungle Camo  
poly/nylon/lycra®

lined in front



B4 - B24 rear view



gold hook



silver hook



T37U-7803 \$26  
B24-7803 \$28  
7803 - Metallic Blue  
Rubber nylon/lycra®

top unlined  
bottom lined in front  
silver hook

T36U-1002 \$26  
B24-1002 \$28  
1002 - Wet Look Hot  
Pink nylon/lycra®

top unlined  
bottom lined in front  
gold hook

T21U-7811 \$26  
B24-7811 \$28  
7811 - Black Rubber  
nylon/lycra®

top unlined  
bottom lined in front  
silver hook

T21-1459 \$26  
B24-1459 \$28  
1459 - Chartreuse  
Tricot®/nylon/lycra

lined in front  
gold hook

T21-5812 \$26  
B24-5812 \$28  
5812 - Liquid Gold  
nylon/lycra®

lined in front  
gold hook

### B34...: Micro String Thong

WOW ! The smallest side tie string thong we make. **ONE SIZE...unlined.**

### T36...: Teardrop Swimtop ...: NEW!

Teardrop swimtop with ties around neck and torso. No excess here ! **ONE SIZE...unlined.**

### F7...: Contest Killer (one size)

WOW again ! Daring swimsuit contest winner. Adjustable long strings to customize the fit of this 3 piece "wild" suit. Bikini Bite® or Flash Tape® recommended to hold this suit in place. **ONE SIZE...unlined.**

### F2...: One Piece Rio

This one piece suit boasts a cleavage enhancing plunging neckline held together with a silver accessory. Low back and half (Rio) fanny coverage. Sizes XS thru XL are "in stock" items, XXS and XXL are custom order suits.

### T34...: Micro Swimtop

WOW ! The smallest triangle swimtop we make. **ONE SIZE...unlined.**

### F8...: Vegas (one size)

Plunging neckline that stops where it has to. Long strings to adjust the fit of this WOW suit. Bikini Bite® or Flash Tape® recommended to hold this suit in place. **ONE SIZE...unlined.**



BB-1001 \$9.95  
Bikini Bite...perfect for bikini contests and pose downs. Roll on formula to keep your swimsuit in place. Superior holding power. Washes off with soap and water. Will not stain fabric. 3oz.



FT-1001 \$9.95  
Flash Tape... a double sided tape to keep sexy swimwear and dresses in place. It has superior holding power, yet is gentle to the skin. Perfect for bikini contests, pose downs and photo shoots. Keeps the suit in place for hours. Will not stain the fabric. Crack and peel liner for easy application. Use also with : deep plunging clothing, open sided dresses, wrap style tops, tube tops and halters, bra straps and shoulder pads. 10 yards.



**F7CC-7812 \$55**  
7812 - Metallic Turquoise Rubber nylon/lycra® Clear Cord Strings unlined

**F7-5813/7815 \$55**  
5813 - Liquid Silver nylon/lycra®  
7815 - Silver Satin Strings unlined

**F8-5808/1008 \$55**  
5808 - Superstretch Red vinyl/nylon/lycra®  
1008 - Red Strings unlined

**F8-7506/1002 \$55**  
7506 - Tigre Fuchsia Foil on Pink Mesh nylon/lycra®  
1002 - Hot Pink Strings lined in crotch only, semi-see-thru dry, see-thru when wet



**T34U-4007 \$24**  
**B34U-4007 \$24**  
4007 - Wet Look Black Tricot®/nylon/lycra® unlined

**T34U-5802 \$24**  
**B34U-5802 \$24**  
5802 - Metallic Ocean Blue Mystique nylon/lycra® unlined

**T36U-6805 \$26**  
**B34U-6805 \$24**  
6805 - Metallic Gold Mystique nylon/lycra® unlined

**F2-4869 \$55**  
4869 - Hot Pink Superstretch vinyl nylon/lycra® lined in front only

**F2-7811 \$55**  
7811 - Black Rubber nylon/lycra® lined in front only

### **B5...: Rio**

Bikini front with half-back (Rio) coverage rear.

### **B23...: Cancun**

Itsy bitsy teeny weeny bikini you can adjust (slide suit) for even less coverage. Rio or Thong back (you adjust). Twin contrasting side straps.

### **B40...: Aruba Bikini...: NEW!**

Low, low front and Rio (half-back) rear connected with either a strap & rectangle (B40S) or a side tie & ring (B40T).

### **T1...: Triangle**

Symmetrical classic triangle top.

### **T21...: Brazilian Triangle**

Asymmetrical and skimpy version of the classic triangle top.

### **T40...: Aruba...:NEW!**

Bandeau style with twisted center, neck and back ties.



A17-7113 SusieQ short \$19  
7113 - Marble Yellow/Black N/L

Stock sizes are XS thru XL.  
All suits are nylon/lycra® except as noted.  
XXS and XXL are custom order suits.



T21-5118 \$26  
B5-5118 \$26  
5118 - Neutron Green  
Tricot®/nylon/lycra

lined in front

T21-1021 \$26  
B5-1021 \$26  
1021 - Wet Look  
Sunshine Yellow  
nylon/lycra

lined in front

T21-5025 \$26  
B5-5025 \$26  
5025 - Wet Look Neon  
Orange nylon/lycra

lined in front



T40-7110 \$28  
B40T-7110 \$28  
7110 - CoCo Batik  
Crimson/Yellow poly  
nylon/lycra

lined in front  
side tie, red ring



T40-7113 \$28  
B40S-7113 \$28  
7113 - Marble Yellow/  
Black Tricot®/nylon/lycra

lined in front, side strap, black  
marble rectangle



T21-7101/1474/7417 \$26  
B23-7101/1474/7417 \$28  
7101 - Meltdown  
poly/nylon/lycra  
1474 - Neon Lime (strings)  
7417 - Hot Pink (strings)

lined in front



T1-1170/1459/7417 \$26  
B23-1170/1459/7417 \$28  
1170 - Hawaiian Floral  
Tricot®/nylon/lycra  
1459 - Chartreuse (strings)  
7417 - Hot Pink (strings)

lined in front

**B26...: French Bikini**

Very, very low cut, twin side string bikini bottom. OO-LAH-LA !

**B30...: Lolita Bikini**

Low cut swimbottom with generous side ties. The sexy & classy design of Hollywood bikinis !

**B35...: Palm Beach Bikini**

Low cut swimbottom with big clear ring side ornaments. The sexy & classic design of Hollywood bikinis with a 2007 touch !

**T6...: Key Hole Bandeau**

Bandeau top with sexy key hole peek-a-boo design.

**T30...: Lolita Swimtop**

Soft and sensual front with neck ties to accentuate this Hollywood inspired swimtop.

**T38...: Palm Beach Swimtop**

Soft and sensual neck ties with a clear "big ring" to draw attention to the cleavage of this Hollywood inspired swimtop.

**visit our web-site for more choices**  
<http://www.skinzwear.com>

All suits on this page lined in front. Stock sizes are XS thru XL. All suits are nylon/lycra® except as noted. XXS and XXL are custom order tops and bottoms.



T30-7417 \$30  
B30-7417 \$28  
7417 - Hot Pink  
Tricot®/nylon/lycra®  
lined in front

T30-7408 \$30  
B30-7408 \$28  
7408 - Peacock  
Tricot®/nylon/lycra®



T21-1459 \$26  
B26-1459 \$28  
1459 - Chartreuse  
Tricot®  
nylon/lycra®

T38-1459 \$30  
B26-1459 \$28  
1459 - Chartreuse  
Tricot®  
nylon/lycra®



T21-7115 \$26  
B26-7115 \$28  
7115 - Ion Orange  
nylon/lycra®



T6-6109 \$28  
B26-6109 \$28  
6109 - Red Web  
Tricot®  
nylon/lycra®



T38-6116 \$30  
B35-6116 \$28  
6116 - Pink Plaid  
Poly/nylon/lycra®



T38-4007 \$30  
B35-4007 \$28  
4007 - Wet Look Black  
Tricot®/nylon/lycra®



T38-7411 \$30  
B35-7411 \$28  
7411 - Matte Neon Orange  
Tricot®/nylon/lycra®



T38-7401 \$30  
B35-7401 \$28  
7401 - Espresso  
Tricot®/nylon/lycra®



**B7...: Skinny-Side Rio**

Our top selling woman's suit. Low bikini front and Rio (half-back) coverage rear connected by a single skinny side strap. Lined in front unless noted other-wise. Sungoddess sexy.

**T1...: Triangle Swimtop**

Symmetrical top with ties around neck and torso.

**T21...: Brazilian Triangle**

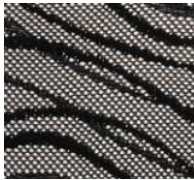
Asymmetrical and skimpy version of the classic triangle top.

Stock sizes are XS thru XL.

All suits are nylon/lycra® except as noted.

XXS and XXL are custom order suits.

S2-5507 sarong \$19  
5507 - Wavy Black Mesh  
nylon/lycra®



T21-7407 \$26  
B7-7407 \$28  
7407 - Mango  
Tricot®/nylon/lycra®  
lined in front



T1-7113 \$26  
B7-7113 \$28  
7113 - Marble Yellow/Black  
Tricot®/nylon/lycra®



T21-7811 \$26  
B7-7811 \$28  
7811 - Black Rubber  
nylon/lycra®



T21U\*-3207 \$26  
B7U\*-3207 \$28  
3207 - Inferno  
poly/nylon/lycra®  
\*unlined



T21-1002 \$26  
B7-1002 \$28  
1002 - Wet Look Hot Pink  
nylon/lycra®



T1-6107/1474 \$26  
B7-6107/1474 \$28  
6107 - Nassau  
Tricot®/nylon/lycra  
1474 - Neon Lime (strings)  
Tricot®/nylon/lycra



T21-6112 \$26  
B7-6112 \$28  
6112 - Cool Brazilian Rhythm  
Tricot®/nylon/lycra®

### **B8...: Brazilian Bikini**

The classic and perfect fitting Brazilian bikini. 3/4's coverage rear.

### **B10...: Banded Bikini**

Brazilian coverage bikini bottom with contrasting band that forms side tie strings. Matches well with the T3,T4 and T22 tops.

### **T4...: Banded Triangle**

Banded version of the classic triangle bikini top !

### **T9...: Halter Underwire**

Cleavage enhancing underwire that pushes up and in to make the use of pads unnecessary. Adjustable tie around the neck.

All suits on this page are lined in front.

Stock sizes are XS thru XL.

All suits are nylon/lycra® except as noted.

XXS and XXL are custom order tops and bottoms.



T4-6108/4007 \$28

B10-6108/4007 \$28

6108 - Royal Web

4007 - Wet Look Black band

both Tricot®/nylon/lycra®

T4-4007/1008 \$28

B10-4007/1008 \$28

4007 - Wet Look Black

1008 - Wet Look Red band

T4-7103/4007 \$28

B10-7103/4007 \$28

7103 - Sahara Camo

poly/nylon/lycra®

4007 - Wet Look Black band

A17-6417 SusieQ \$19

6417 - Matte Black Tricot®/nylon/lycra®



T21-6417 \$26

B8-6417 \$26

6417 - Matte Black

Tricot®/nylon/lycra® lined in front

T9-1170 \$40

B8-1170 \$26

1170 - Hawaiian Floral

Tricot®/nylon/lycra®

T21-1023 \$26

B8-1023 \$26

1023 - Wet Look Purple

T1-5115 \$26

B8-5106 \$26

5115 - White Stars on Navy

5106 - Red and White Stripes

T1-6112 \$26

B8-6112 \$26

6112 - Cool Brazilian Rhythm

Tricot®/nylon/lycra®



**T38...: Palm Beach Swimtop**  
Soft and sensual neck ties with a clear "big ring" to draw attention to the cleavage of this Hollywood inspired swimtop.

**B9...: Skinny Side Brazilian**  
The classic and perfect fitting Brazilian bikini made unique with a skinny side strap connection. 3/4's coverage rear.

**T9...: Halter Underwire**  
Cleavage enhancing underwire that pushes up and in to make the use of pads unnecessary. Adjustable tie around the neck.

**T17...: Riviera Swimtop**  
Three panel top that enhances cleavage without the use of pads ! Around the neck and back adjustable ties. Matches B17 swimbottom.

**B17...: Riviera**  
Low rise bikini for the "hipster" fit with twin front and rear accent panels that allow for unique fabric color and print combinations. Matches T17 top.

T17-1008/1002 \$28  
B17-1008/1002 \$28  
1008 - Wet Look Red  
1002 - Wet Look Hot Pink

T17-1023/6006 \$28  
B17-1023/6006 \$28  
1023 - Wet Look Purple  
6006 - Wet Look Deep Coral

T17-3001/1021 \$28  
B17-3001/1021 \$28  
3001 - Wet Look Turquoise  
1021 - Wet Look Sunshine Yellow

All suits this page lined in front.  
Stock sizes are XS thru XL.  
All suits are nylon/lycra® except as noted.  
XXS and XXL are custom order tops and bottoms.

**SKINZ**  
Custom Services:

- make suit in different fabric
- add or leave out lining
- mix top & bottom styles
- order sizes XXS and XXL

Please call 727-441-8789  
or e-mail:  
skinz@skinzwear.com

visit our web-site for more choices  
<http://www.skinzwear.com>



T1-5103 \$26  
B9-5103 \$28  
5103 - Maui Pineapple  
poly/nylon/lycra®

T9-6105 \$40  
B9-6105 \$28  
6105 - Miami Sunset Tye Dye  
poly/nylon/lycra®

T38-7407 \$30  
B9-7407 \$28  
7407 - Mango  
tricot®/nylon/lycra®

T1-7117 \$26  
B9-7117 \$28  
7117 - Swirl  
tricot®/nylon/lycra®



T1 - Triangle Top \$26  
B42 - Cabarete **NEW!** \$28  
7118 Penciline Fern  
nylon/lycra®



T32 - Paneled Triangle \$28  
B32 - Tanga \$28  
6133 - Racing Checkerboard  
nylon/lycra®  
1008 - Wet Look Red  
(accent panels)



T38 - Palm Beach Top \$30  
B12 - Highwaist Fullcut \$26  
7112 - CoCo Batik  
Turquoise/Royal nylon/lycra®



T39 - Monte Carlo Tie Top \$30  
B36 - Monte Carlo Tie Bottom \$28  
7402 - Speckled Pink Microfiber®  
nylon/lycra®

visit our web-site for more choices  
<http://www.skinzwear.com>



T9 - Halter Underwire \$40  
B11 - California Moderate \$26  
6407 - Black  
Tricot®/nylon/lycra®



T1 - Triangle Top \$26  
B13 - V-Panel Fullcut \$30  
7117 - Swirl  
Tricot®/nylon/lycra®



T21 - Brazilian Triangle \$26  
B22 - French Thong \$26  
7813 - Clearcoat Camo  
nylon/lycra®



T4 - Banded Triangle \$28  
B27 - Banded Rio \$28  
7113 - Marble Yellow/Black  
Tricot®/nylon/lycra®  
4007 - Wet Look Black (band)

### **F4...: One-piece Brazilian**

Comfy and secure one piece suit that looks like a bikini from the rear. 3/4's coverage fanny, criss cross straps !

### **F5...: One-piece California**

Comfy and secure one piece suit that looks like a bikini from the rear. Moderate coverage fanny, criss cross straps !

### **F6...: One-piece Full Cut**

Comfy and secure one piece suit that looks like a bikini from the rear. Full coverage fanny, criss cross straps !

### **T23...: Tankini Top**

Tank style top with soft cups built in. Loose waist and comfy straps.

### **B29...: Tankini Bottom**

Full cut swim bottom. Moderate leg hole height.

All suits this page lined in front.  
Stock sizes are XS thru XL.  
All suits are nylon/lycra®  
except as noted.  
XXS and XXL are custom order suits.

**SKINZ**

#### **Custom Services:**

- make suit in different fabric
- add or leave out lining
- mix top & bottom styles
- order sizes XXS and XXL

Please call 727-441-8789  
or e-mail :

[skinz@skinzwear.com](mailto:skinz@skinzwear.com)



**F4-7116 \$50**  
7116 - Ion Blue

**F5-1170 \$50**  
1170 - Hawaiian Floral  
Tricot®/nylon/lycra®

**F5-5103 \$50**  
5103 - Maui Pineapple  
poly/nylon/lycra®

**visit our web-site for more choices**  
<http://www.skinzwear.com>



**T23-6122 \$45**  
**B29-6122 \$26**  
6122 - Kauai  
Tricot®/nylon/lycra®

**T23-7111 \$45**  
**B29-7111 \$26**  
7111 - CoCo Batik  
Royal/Kelly

**F6-7101 \$50**  
7101 - Meltdown

**F6-7112 \$50**  
7112 - CoCo Batik  
Turquoise/Royal

**F4-7110 \$50**  
7110 - CoCo Batik  
Crimson/Yellow

**A11...: Low Rise Tights**

Skin tight and sexy low waist and 1 inch waistband. (UNLINED)

**A5...: Boot Cut Tights**

Low rider tights with flared boot cut below the knee ! (UNLINED)

**A4...: Tights**

Skin tight and sexy regular waist with 1 inch waistband. (UNLINED)

**T7...: Hole-n-One Top**

Single shoulder strap and keyhole enhance cleavage to define this unique top !

**T8CE...: Underwire Top**

The "wonder bra style" that pushes up and in to enhance cleavage without the need for padding. Clear elastic adjustable shoulder straps.

**MMM...: Slashed Ming Skirt**

**SMT...: Slashed Ming Top**



A5      A11      rear view      A4      SMT      MMM

All tights on this page are unlined. All tops on this page are lined in front unless otherwise noted. Stock sizes are XS thru XL. All items are nylon/Lycra® except as noted. XXS and XXL are custom order items.



**SMT-1459 \$24**  
**MMM-1459 \$24**  
 1459 - Chartreuse  
 Tricot@nylon/lycra®

**SMT-6400 \$24**  
**MMM-6400 \$24**  
 6400 - White  
 poly/nylon/lycra®

**SMT-6417 \$24**  
**MMM-6417 \$24**  
 6417 - Matte (no shine)  
 Black poly/nylon/lycra®

(both top and skirt now in (3) sizes...XS/S, M/L, XL/XXL)



**T7U-7811 \$30**  
 unlined

**T1U-4007 \$26**  
 nylon/lycra®  
 unlined

**T6U-5807 \$30**  
 unlined

**T6U-7801 \$30**  
 unlined

**T6-7802 \$30**  
 lined in front

**T9-5812 \$40**  
 lined in front

**T8CE-5813 \$40**  
 clear adjustable  
 shoulder straps  
 lined in front

**A11-5807 \$40**  
 5807 - Gloss Black  
 Superstretch  
 vinyl  
 nylon/lycra®  
 unlined

**A11-7801 \$40**  
 7801 - Pearlized Sapphire  
 Reptile vinyl  
 nylon/lycra®  
 unlined

**A4-7802 \$40**  
 7802 - Hot Pink  
 "Rubber"  
 nylon/lycra®  
 unlined

**A4-5812 \$40**  
 5812 - Liquid Gold  
 metallic/nylon/lycra®  
 unlined

**A5-7811 \$40**  
 7811 - Black  
 "Rubber"  
 nylon/lycra®  
 unlined

**A11-4007 \$35**  
 4007 - Wet Look  
 Black  
 nylon/lycra®  
 unlined

**A4-5813 \$40**  
 5813 - Liquid Silver  
 metallic/nylon/lycra®  
 unlined

### C1...: Catsuit

Full body cat suit with invisible back zipper. Great as a foundation, or, go it alone. UNLINED.

### C4...: Camicat

Seamless front for an ultra smooth shape. Spaghetti straps and low back for easy entry and exit. UNLINED.

C1 & C4 stock sizes are XS thru XL. XXS and XXL are custom order catsuits.



C4-5813 \$80  
5813 - Liquid Silver nylon/lycra®



C4-5807 \$80  
5807 - Gloss Black Superstretch vinyl/nylon/lycra®



C4-6808 \$80  
6808 - Red Leather stretch vinyl\* nylon/lycra®  
\*fits snug, may need one size larger than normal.



C4-7814 \$80  
7814 - Gloss Indigo Superstretch vinyl/nylon/lycra®



C1-4007 \$70  
4007 - Wet Look Black tricot®/nylon/lycra®



C1-7803 \$90  
7803 - Metallic Royal Blue Rubber nylon/lycra®



C1-5807 \$90  
5807 - Gloss Black Superstretch vinyl nylon/lycra®



C1-1002 \$70  
1002 - Wet Look Hot Pink nylon/lycra®



C1-1008 \$70  
1008 - Wet Look Red nylon/lycra®



**MSD-6114 \$40**  
6114 - Mocha Jungle Chamois\*  
nylon/lycra® \* supersoft !



**MSD-6400 \$40**  
6400 - White poly  
nylon/lycra®



**MSD-6417 \$40**  
6417 - Matte (no shine) Black  
poly/nylon/lycra®

D1 stock sizes are XS thru XL.  
XXS and XXL are custom order dresses.  
MSD = Now in (3) sizes !

### **D1...: Tank Mini Dress**

Mega popular club dress in wild, sexy and skin tight fabrics. **UNLINED.**

### **MSD...: Ming Slashed Dress**

You asked for it, the Ming dress that sets souls on fire ! **UNLINED.**  
(3) Sizes : XS/S, M/L, XL/XXL.



**D1-5812 \$40**  
5812 - Liquid Gold  
nylon/lycra®



**D1-7802 \$40**  
7802 - Hot Pink  
Rubber nylon  
lycra®



**D1-7805 \$40**  
7805 - Modsquad Embossed  
Black vinyl/nylon/lycra®  
\* fits snug, may need one  
size larger than normal



**D1-7806 \$40**  
7806 - Modsquad  
Embossed Red  
vinyl/nylon/lycra®  
\* fits snug, may need one  
size larger than normal



**D1-7812 \$40**  
7812 - Metallic  
Turquoise Rubber  
nylon/lycra®



**D1-7814 \$40**  
7814 - Gloss Indigo  
Superstretch  
vinyl/nylon/lycra®

skinzwear.com.inc  
2027 Gulf to Bay Blvd.  
Clearwater, Florida 33765  
\* 21 years in business \*  
www.skinzwear.com

PRESORTED STD  
U.S.POSTAGE  
PAID  
CLEARWATER FL  
PERMIT NO 892