

**SKINZ**®

**2005**



**M13...: BOXER**

THE M13 IS OUR "AUSTRALIAN CUT" FITTED BOXER SWIMSUIT. FOUR PANELS PROVIDE A FORM FITTING FRONT. ONE INCH ELASTIC IN THE LEGS AND WAIST MAKE THIS A GREAT (AND SECURE) SUIT FOR WATERSPORTS

**M16...: LOW BRIEF**

THE M16 IS OUR MODERATE CUT LOW-RIDER BRIEF SWIMSUIT. IT HAS A FULL FRONTAL CENTER SEAM FOR A PERFECTLY CONTOURED FIT. THE BACK IS MODERATE/FULL COVERAGE.

**M38...: LOWRIDER BOXER**

THE M38 IS A NEW VERSION OF THE M13 BOXER WITH AN UPDATED "LOW" WAIST LINE. SAME SECURE WATERSPORTS FIT AS THE M13.

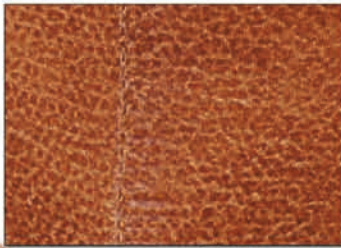
IN-STOCK M13'S, ARE \$35, M38'S ARE \$34 AND M16'S ARE \$26 STOCK SIZES : XS THRU XXL ALL FABRICS ARE NYLON/LYCRA®

THE SUITS ON THIS PAGE ARE OFFERED IN THESE COLORS AND PRINTS :

- |   |  |                                     |            |
|---|--|-------------------------------------|------------|
| 1452 HEAVYWEIGHT TRICOT BLACK             | 4112 LAVA TRICOT                         | (WEB VIEW) 5109 TEAL FERNS ON BLACK | (WEB VIEW) |
| 2117 LIME AQUA HEAT TRICOT                | (WEB VIEW) 4116 DEEP BLUE SEA TRICOT     | 5116/5105 STARS AND STRIPES         |            |
| 3003 WET LOOK MIDNIGHT BLUE FRENCH TRICOT | 4119 LIME CHARTREUSE COBBLESTONES TRICOT | 5119 COSMIC WAVE NEUTRON BLUE       | (WEB VIEW) |
| 4007 WET LOOK BLACK FRENCH TRICOT         | 4808 CLEARCOAT BUCKSKIN                  | 5402 MATTE CORAL TRICOT             |            |



M13-5116/5105  
\$35



FABRIC-4808



M16-5119  
\$26



M38-3003



M38-4119  
\$34



REAR VIEW M13



REAR VIEW M16



REAR VIEW M38



M13-4116

\$35



M13-4007

\$35



M16-5402

\$26



M16-4808

\$26

## M26...: MEN'S SMOOTH BIKINI

THE M26 IS A COMBINATION OF A SMOOTH AND ALMOST SEAMLESS FRONT WITH THE BIKINI COVERAGE REAR.

WE STOCK THE SIZES XS THRU XXL.

FOR A FULLER AND SEAMED POUCH, CHECK OUT THE M9 STYLE.

NOTE : THE SUIT MADE IN FABRIC # 5501 IS A SEMI-TRANSPARENT MESH. IT IS ALSO UNLINED WHICH MAKES IT UNSUITABLE FOR FAMILY BEACHES.

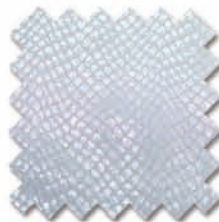
THE M26 IS OFFERED IN THESE COLORS AND PRINTS :

- 3001 WET LOOK TURQUOISE FRENCH TRICOT
- 3002 WET LOOK TITANIUM FRENCH TRICOT
- 4007 WET LOOK BLACK FRENCH TRICOT
- 5111 HIBISCUS ON RUBY (WEB VIEW)
- 5113 GREY BLACK ZEBRA
- 5114 FLAGS (WEB VIEW)
- 5117 PINK PALMS
- 5501 IRIDESCENT LIME/AQUA MESH (NO LINING)
- 5809 WHITE SNAKE

ALL IN-STOCK M26'S ARE \$26

ALL FABRICS ARE NYLON/LYCRA®

TRICOT NYLON/LYCRA® FABRICS ARE THE VERY HIGHEST QUALITY SWIMWEAR. FABRICS WITH TRUE 4-WAY STRETCH. WET LOOK FABRICS HAVE UNDERGONE A HEAT TREATMENT TO MAKE THEM SUPER SHINY (AND REVEALING).



FABRIC 5809



M26-3001

\$26



M26-4007

\$26



M26-5113

\$26



M26-5117

\$26



M26-5809

\$26



M26-5501

\$26



REAR VIEW M26-3002



M26-3002

\$26

**M9....: FITTED BIKINI**

THE M9 IS A BIKINI SWIMSUIT. IT HAS A FULL FRONTAL CENTER SEAM FOR A PERFECTLY CONTOURED FIT. THE BACK IS 3/4'S BIKINI COVERAGE. THE M9 IS ALSO KNOWN AS A POSING SUIT.

**M21....: CUTAWAY RIO**

THE CUTAWAY FRONT MEANS ALL EXCESS FABRIC HAS BEEN "CUTAWAY" TO LEAVE A SMOOTH AND ALMOST SEAMLESS STYLE WITH A SMALL DART UNDERNEATH FOR COMFORT FIT. THE "RIO" BACK DENOTES A HALF BACK COVERAGE.

**M36....: RIVIERA**

THE M36 IS A NEW SUIT FOR 2005. THIS IS THE BASIC COMPETITION SWIM BRIEF (DRAWSTRING WAIST) WITH A VERY LOW EUROPEAN PROFILE. HOW LOW CAN WE GO? THIS IS IT!



**M24....: BANDED BIKINI** THE M24 HAS THE BASIC COVERAGE OF A MEN'S BIKINI, YET HAS A SEAMLESS (SMALL DART UNDERNEATH FOR FIT) STYLE FRONT FOR A SMOOTH APPEARANCE. THE CONTRASTING BAND GIVES THE SUIT A UNIQUE LOOK.

THE ABOVE SUITS ARE OFFERED IN THESE COLORS AND PRINTS:

- |  |   |                             |
|--|---|-----------------------------|
| 1008 WET LOOK RED                      | 3003 WET LOOK MIDNIGHT BLUE FRENCH TRICOT | 5107 SKULLS                 |
| 1026 WET LOOK BURGUNDY                 | 4007 WET LOOK BLACK FRENCH TRICOT         | 5109 CLOUDS WITH WHITE BAND |
| 1452 HEAVYWEIGHT BLACK WITH WHITE BAND | 5104 CAMO WITH BLACK BAND                 | 5110 HIBISCUS ON NAVY BLUE  |

ALL IN-STOCK M9'S, M21'S, M24'S AND M36'S ARE \$26 STOCK SIZES: XS THRU XXL ALL FABRICS ARE NYLON/LYCRA®

CALL 727-441-8789 TO SPECIAL ORDER THIS SUIT IN DIFFERENT FABRICS OR ODD SIZES. [HTTP://WWW.SKINZWEAR.COM](http://www.skinzwear.com).

### **M18...: FITTED RIO**

THE M18 HAS PROVEN TO BE ONE OF OUR MOST POPULAR SUITS. CENTER SEAMED IN THE FRONT FOR A FULL AND CONTOURED POUCH. CENTERED AND GATHERED SEAM IN THE BACK FOR A BUN HUGGING REAR FIT. HALF-BACK RIO COVERAGE WITH SKINNY SIDE STRAPS. THE MAN'S FORM, FRONT AND BACK, COME THROUGH EXPLICITLY WITH THIS SUIT. WE STOCK THE SIZES XS THRU XXL.

THE M18 IS OFFERED IN THESE COLORS AND PRINTS :

- 3001 WET LOOK TURQUOISE
- 4001 WET LOOK WHITE FRENCH TRICOT
- 4007 WET LOOK BLACK FRENCH TRICOT
- 4119 LIME COBBLESTONES
- 5025 WET LOOK NEON ORANGE
- 5101 FLORAL ON SEAFOAM (WEB VIEW)
- 5102 HIBISCUS ON HOT PINK
- 5105 BUBBLES
- 5112 FLORAL ON BLACK (WEB VIEW)
- 5119 COSMIC WAVE ELECTRON GREEN (WEB VIEW)
- 5806 WET LOOK MARS

**ALL IN-STOCK M18'S ARE \$28**

ALL FABRICS ARE NYLON/LYCRA®

TRICOT NYLON/LYCRA® FABRICS ARE THE VERY HIGHEST QUALITY SWIMWEAR FABRICS WITH TRUE 4-WAY STRETCH. WET LOOK FABRICS HAVE UNDERGONE A HEAT TREATMENT TO MAKE THEM SUPER SHINY (AND REVEALING).



CALL 727-441-8789 TO SPECIAL ORDER THIS SUIT IN DIFFERENT FABRICS OR ODD SIZES.

**M29...: SUPER LOW RIO**

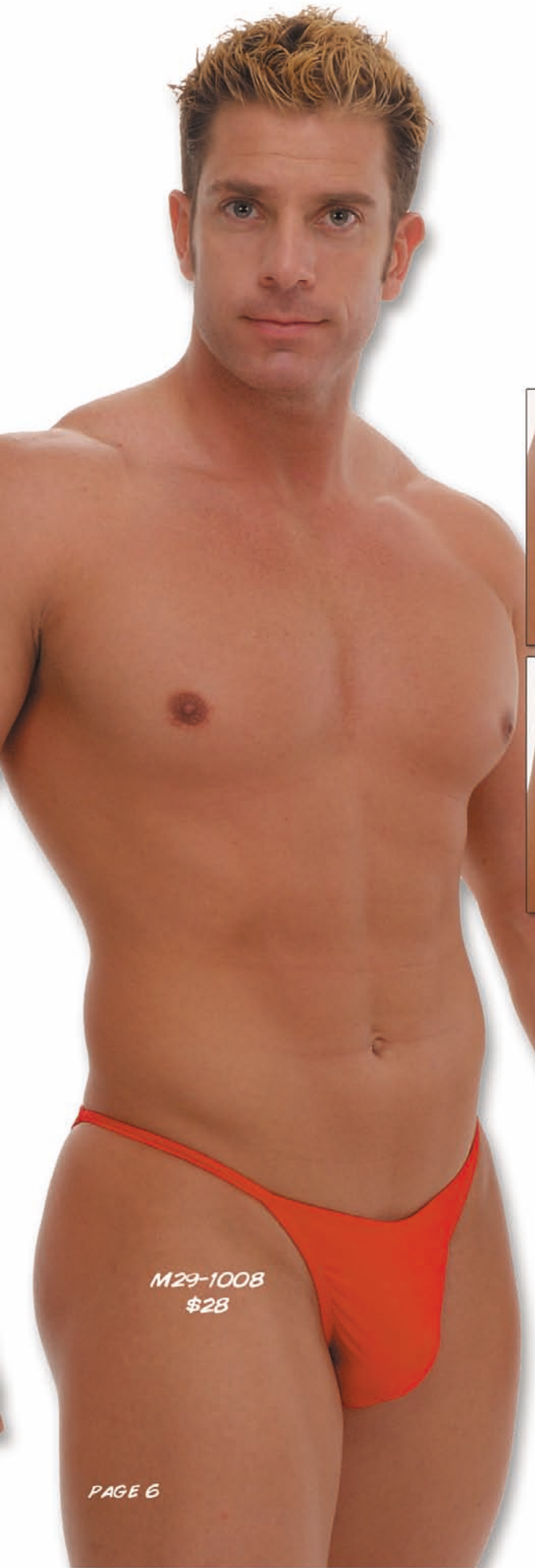
THE M29, NICKNAMED THE "PLUMBER", SPORTS A VERY LOW FRONT AND BACK CONNECTED WITH A SKINNY SIDE STRAP. IF BUTT CLEAVAGE IS YOUR THING, THIS IS THE SUIT FOR YOU. A SURPRISE #1 SELLER FOR 2004.

THE M29 IS OFFERED IN THESE COLORS AND PRINTS :

- 1008 WET LOOK RED
- 1459 CHARTREUSE TRICOT
- 1499 WHITE TRICOT
- 2117 LIME AQUA HEAT (WEB VIEW)
- 3001 WET LOOK TURQUOISE FRENCH TRICOT (WEB VIEW)
- 4007 WET LOOK BLACK FRENCH TRICOT
- 4115 SOUTH BEACH RHYTHM (WEB VIEW)
- 4522 HOT PINK STRETCH LACE (UNLINED AND SEMI-SEE-THRU)
- 5108 CLOUDS TRICOT
- 5804 HOLOGRAPHIC GOLD SHATTERED GLASS ON CHOCOLATE

**ALL IN-STOCK M29s ARE \$28 STOCK SIZES : XS THRU XXL**

ALL FABRICS ARE NYLON/LYCRA®  
 TRICOT NYLON/LYCRA® FABRICS ARE THE VERY HIGHEST QUALITY SWIMWEAR FABRICS WITH TRUE 4-WAY STRETCH. WET LOOK FABRICS HAVE UNDERGONE A HEAT TREATMENT TO MAKE THEM SUPER SHINY (AND REVEALING).



M29-1008  
\$28



M29-1459

\$28



M29-4007

\$28



M29-1499

\$28



M29-4522

\$28



M29-5108

\$28



M29-5804

\$28



REAR VIEW M29

**M27...: SKINNY SIDE RIO**

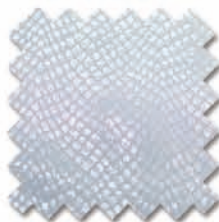
THE FRONT HAS A NEARLY INVISIBLE SMALL DART UNDERNEATH FOR FIT AND COMFORT. SKINNY SIDE STRAPS. HALF-BACK (RIO) COVERAGE REAR. VERY POPULAR SUIT. FOR A FULLER POUCH AND FITTED REAR, SEE THE M18. ALL SUITS HAVE FRONT LINING EXCEPT THE IRIDESCENT LIME/AQUA MESH SUIT.

THE M29 IS OFFERED IN THESE COLORS AND PRINTS :

- 3216 CHARTREUSE HIBISCUS ON LIME (WEB VIEW)
- 4007 WET LOOK BLACK
- 4101 GARDEN OF EDEN (WEB VIEW)
- 5025 WET LOOK NEON ORANGE
- 5103 MAUI PINEAPPLE
- 5114 FLAGS
- 5117 PINK PALMS
- 5501 IRIDESCENT LIME/AQUA MESH (UNLINED & SEMI SEE THRU)
- 5809 WHITE SNAKE

ALL IN-STOCK M27'S ARE \$28 STOCK SIZES : XS THRU XXL

ALL FABRICS ARE NYLON/LYCRA®  
 TRICOT NYLON/LYCRA® FABRICS ARE THE VERY HIGHEST QUALITY SWIMWEAR FABRICS WITH TRUE 4-WAY STRETCH. WET LOOK FABRICS HAVE UNDERGONE A HEAT TREATMENT TO MAKE THEM SUPER SHINY (AND REVEALING).



CALL 727-441-8789 TO SPECIAL ORDER THIS SUIT IN DIFFERENT FABRICS OR ODD SIZES. [HTTP://WWW.SKINZWEAR.COM](http://www.skinzwear.com).

**M33...: BANDED RIO**

THE FRONT HAS A NEARLY INVISIBLE SMALL DART UNDERNEATH FOR FIT AND COMFORT, THE FRONT AND REAR PANELS ARE CONNECTED BY A CONTRASTING WAIST BAND..

THE IN-STOCK M28'S & M33'S ARE \$26

STOCK SIZES : XS THRU XXL

ALL FABRICS ARE NYLON/LYCRA®

ALL SUITS HAVE FRONT LINING EXCEPT THE BABY BLUE STRETCH LACE AND THE SPARKLESHEEN WHITE (THESE 2 SUITS ARE SEMI-SEE-THRU). TRICOT NYLON/LYCRA® FABRICS ARE THE VERY HIGHEST QUALITY SWIMWEAR FABRICS WITH TRUE 4-WAY STRETCH. WET LOOK FABRICS HAVE UNDERGONE A HEAT TREATMENT TO MAKE THEM SUPER SHINY (AND REVEALING).

THE SUITS ON THIS PAGE ARE OFFERED IN THESE COLORS AND PRINTS :

- 3001 WET LOOK TURQUOISE FRENCH TRICOT
- 3002 WET LOOK TITANIUM FRENCH TRICOT
- 3201 BLUE LIGHTNING
- 4007 WET LOOK BLACK FRENCH TRICOT
- 4102 HALEIWA SURF
- 4103 GERRY JARCIA
- 4521 BABY BLUE STRETCH LACE
- 5105 BUBBLES
- 5109 TEAL FERNS
- 5503 SPARKLESHEEN WHITE (WEBSITE ONLY) (UNLINED & SEMI SEE THRU)

(WEB VIEW)  
(UNLINED & SEMI SEE THRU)  
(WEB VIEW)



**M28...: RIO**

THE FRONT HAS A NEARLY INVISIBLE SMALL DART UNDERNEATH FOR FIT AND COMFORT, SIDE STRAPS AND HALF-BACK (RIO) COVERAGE REAR.



CALL 727-441-8789 TO SPECIAL ORDER THESE SUITS IN DIFFERENT FABRICS OR ODD SIZES. [HTTP://WWW.SKINZWEAR.COM](http://www.skinzwear.com).



**M25...: SKINNY SIDE THONG**

THE FRONT HAS A NEARLY INVISIBLE SMALL DART UNDERNEATH FOR FIT AND COMFORT.  
SKINNY SIDE STRAPS, CLASSIC THONG BACK.

THE M25 IS OFFERED IN THESE COLORS AND PRINTS :

- 1452 HEAVYWEIGHT BLACK TRICOT (WEB VIEW)
- 1459 CHARTREUSE TRICOT
- 3003 WET LOOK MIDNIGHT BLUE FRENCH TRICOT
- 3477 NUDE
- 4848 HOLOGRAPHIC SILVER SHATTERED GLASS
- 5101 AQUA FLORAL (WEB VIEW)
- 5102 HIBISCUS ON HOT PINK
- 5113 GREY BLACK ZEBRA
- 5402 MATTE CORAL TRICOT

ALL IN-STOCK M25'S ARE \$28 STOCK SIZES : XS THRU XXL

ALL FABRICS ARE NYLON/LYCRA®  
TRICOT NYLON/LYCRA® FABRICS ARE THE VERY HIGHEST QUALITY SWIMWEAR  
FABRICS WITH TRUE 4-WAY STRETCH. WET LOOK FABRICS HAVE UNDERGONE A HEAT  
TREATMENT TO MAKE THEM SUPER SHINY (AND REVEALING).



CALL 727-441-8789 TO SPECIAL ORDER THIS SUIT IN  
DIFFERENT FABRICS OR ODD SIZES. [HTTP://WWW.SKINZWEAR.COM](http://www.skinzwear.com).

**M2R...: STRING THONG**

THE M2R IS A FULL CUT POUCH, WITH COVERAGE ADJUSTABILITY, STRING THONG. THE TRI-RING WHERE THE STRINGS MEET IN THE BACK CAN BE EITHER SILVER OR GOLD TO GIVE THE SUIT A "RICH" LOOK AND ELIMINATE "STRING ROLL".

**M14...: BANDED THONG**

THE M14 IS A MINIMAL POUCH (SEAMLESS) CLASSIC THONG WITH CONTRASTING WAIST BAND FOR ACCENT.

TRICOT NYLON/LYCRA FABRICS ARE THE VERY HIGHEST QUALITY SWIMWEAR FABRICS WITH TRUE 4-WAY STRETCH. WET LOOK FABRICS HAVE UNDERGONE A HEAT TREATMENT TO MAKE THEM EXTRA SHINY AND REVEALING.

**M17...: ADJ SKINNY SIDE THONG**

THE M17 HAS A FULL CUT ADJUSTABLE POUCH (M2R) WITH SKINNY SIDE STRINGS THAT MEET TO A CLASSIC "T" BACK REAR DESIGN. THIS SUIT WAS DESIGNED BY YOU, OUR CUSTOMERS.

**M32...: QUICK RELEASE THONG**

THE M32 IS THE CLASSIC SEAMLESS POUCH (M4) MEN'S THONG WITH A QUICK RELEASE (GOLD OR SILVER) HOOK ADDED.

**WE STOCK ALL THE SUITS ON THIS PAGE IN SIZES XS THRU XXL**



- THE COLORS AND PRINTS ON THIS PAGE ARE :
- 1002 WET LOOK HOT PINK (GOLD RING)
  - 1023 WET LOOK HOT PINK
  - 1452 HEAVYWEIGHT BLACK TRICOT /1499 WHITE BAND
  - 4007 WET LOOK FRENCH TRICOT BLACK
  - 4110 HOT TROPICS TRICOT
  - 5802 METALLIC BLUE OCEAN MYSTIQUE (SILVER HOOK)
  - 5807 HIPSTER SUPER STRETCH BLACK VINYL (SILVER HOOK)
  - 5809 WHITE SNAKE / 4007 BLACK BAND
  - 5812 LIQUID GOLD (GOLD HOOK)
  - 5813 LIQUID SILVER (SILVER RING)



**M31...: Y BACK THONG**

A SEAMLESS FRONT WITH A VERY SMALL DART UNDERNEATH TO CREATE A STREAMLINED POUCH. THE UNIQUE "LOW TWIN STRING" THONG BACK FORMS A CLEAN AND LOW "Y" OUTLINE.

THE M31 IS OFFERED IN THESE COLORS AND PRINTS :

- 1003 WET LOOK ROYAL BLUE
- 1021 WET LOOK SUNSHINE YELLOW
- 1452 HEAVYWEIGHT TRICOT BLACK
- 3001 WET LOOK TURQUOISE FRENCH TRICOT (WEB VIEW)
- 4001 WET LOOK WHITE FRENCH TRICOT
- 5103 MAUI PINEAPPLE
- 5105 BUBBLES
- 5110 HIBISCUS ON NAVY BLUE (WEB VIEW)
- 5118 COSMIC WAVE NEUTRON GREEN
- 5801 METALLIC KELLY GREEN MYSTIQUE (WEB VIEW)

ALL IN-STOCK M25'S ARE \$28 STOCK SIZES : XS THRU XXL

ALL FABRICS ARE NYLON/LYCRA®  
 TRICOT NYLON/LYCRA® FABRICS ARE THE VERY HIGHEST QUALITY SWIMWEAR  
 FABRICS WITH TRUE 4-WAY STRETCH. WET LOOK FABRICS HAVE UNDERGONE A HEAT  
 TREATMENT TO MAKE THEM SUPER SHINY (AND REVEALING). METALLIC FABRICS ARE  
 BEAUTIFUL BUT SUBJECT TO ABRASION, SAVE FOR SPECIAL OCCASIONS.



REAR VIEW M31

M31-1452  
\$28

CALL 727-441-8789 TO SPECIAL ORDER THIS  
 SUIT IN DIFFERENT FABRICS OR ODD SIZES.  
 VISIT : [HTTP://WWW.SKINZWEAR.COM](http://www.skinzwear.com).

**M3...: THONG**

THE M3 IS SIMPLY THE BEST FITTING MEN'S "T" BACK YOU CAN BUY. FULL FRONTAL SEAM FOR A COMFORTABLE AND CONTOURED FIT. BASIC MEN'S "T" BACK REAR. FOR A SLIMMER AND CUTAWAY POUCH, SEE THE M4.

**M37...: TANGA**

NEW! THIS IS ANOTHER SUIT REQUESTED BY OUR CUSTOMERS. WIDER SIDE TANGA DESIGN FOR A COMFORTABLE T BACK FIT. AVOIDS THE "BITING" THAT NARROWER STRAPS SOMETIMES EXHIBIT.

THE IN-STOCK M3's & M37's ARE \$26

STOCK SIZES : XS THRU XXL

ALL FABRICS ARE NYLON/LYCRA®

THE SUITS ON THIS PAGE ARE OFFERED IN THESE COLORS AND PRINTS :

- 1248 LAVA LAMP BLUE TRICOT (WEB SITE)
- 3002 WET LOOK TITANIUM FRENCH TRICOT
- 4101 GARDEN OF EDEN
- 4110 HOT TROPICS (WEB SITE)
- 4115 SOUTH BEACH RHYTHM
- 4402 SUPER SOFT BRUSHED BABY BLUE
- 4848 SILVER HOLOGRAPHIC SHATTERED GLASS (WEB SITE)
- 5103 MAUI PINEAPPLE (WEB SITE)
- 5407 SLINKY BLACK
- 5106 RED AND WHITE STRIPES
- 5116 WHITE STARS ON NAVY
- 5117 PINK PALMS



**MIR...: CUT AWAY STRING THONG**

THE MIR IS OUR SKIPIEST MEN'S SWIMSUIT WITH A MINIMAL POUCH THAT IS ADJUSTABLE FOR EVEN SMALLER COVERAGE. THE THONG STRINGS MEET IN THE BACK TO FORM A LOW "Y" CONVERGENCE POINT. THIS SPECIAL VERSION USES A GOLD OR SILVER "TRI-RING" ORNAMENT FOR STABILITY, TO ELIMINATE "STRING ROLL" SHOW A CLASSY CLEAN LOOK.

THE MIR IS OFFERED IN THESE COLORS AND PRINTS :

- |      |                                  |                          |
|------|----------------------------------|--------------------------|
| 1023 | WET LOOK PURPLE                  | (GOLD RING)              |
| 1459 | CHARTREUSE TRICOT                | (GOLD RING)              |
| 1499 | WHITE HEAVYWEIGHT TRICOT         | (GOLD RING)              |
| 3001 | WET LOOK TURQUOISE FRENCH TRICOT | (SILVER RING)            |
| 4007 | WET LOOK BLACK FRENCH TRICOT     | (SILVER RING)            |
| 4104 | MOLECULE BLUE                    | (SILVER RING) (WEB SITE) |
| 5111 | RUBY RED HIBISCUS                | (GOLD RING)              |
| 5402 | MATTE CORAL TRICOT               | (GOLD RING)              |
| 5804 | GOLD HOLOGRAPHIC SHATTERED GLASS | (GOLD RING) (WEB SITE)   |

ALL IN-STOCK MIR'S ARE \$28 STOCK SIZES : XS THRU XXL

ALL FABRICS ARE NYLON/LYCRA®  
 TRICOT NYLON/LYCRA® FABRICS ARE THE VERY HIGHEST QUALITY SWIMWEAR  
 FABRICS WITH TRUE 4-WAY STRETCH. WET LOOK FABRICS HAVE UNDERGONE A HEAT  
 TREATMENT TO MAKE THEM SUPER SHINY (AND REVEALING).



SILVER RING



GOLD RING



MIR-1023

\$28



MIR-1459

\$28



MIR-4007

\$28



MIR-1499

\$28



MIR-5402

\$28



MIR-3001

\$28



REAR VIEW MIR



MIR-5111  
\$28

CALL 727-441-8789 TO SPECIAL ORDER THIS SUIT IN DIFFERENT FABRICS OR ODD SIZES. VISIT : [HTTP://WWW.SKINZWEAR.COM](http://www.skinzwear.com).

**M19...: HOT SHORTS**

THE M19 IS OUR UNDERWEAR AND SWIMWEAR CROSSOVER SHORT . THIS ITEM IS UNLINED AND HAS NO ELASTIC IN THE LEGS. VERY COMFORTABLE UNDER CLOTHES WITH ALMOST NO VISIBLE UNDERWEAR LINE. THE VERSIONS IN IRIDESCENT AND INFERNO MESH ARE ALMOST SEE THRU AND VERY CLOSE TO MEN'S LINGERIE. SEXY.

**MANSILK®...: SILK THONGS**

NEW ! AFTER QUITE A SEARCH WE HAVE SETTLED ON THE MANSILK BRAND OF SILK THONGS FOR MEN. WASHABLE SILK THONGS THAT LOOK AND FEEL GREAT. YA GOTTA HAVE A COUPLE IN YOU UNDERWEAR DRAWER FOR SPECIAL OCCASIONS !

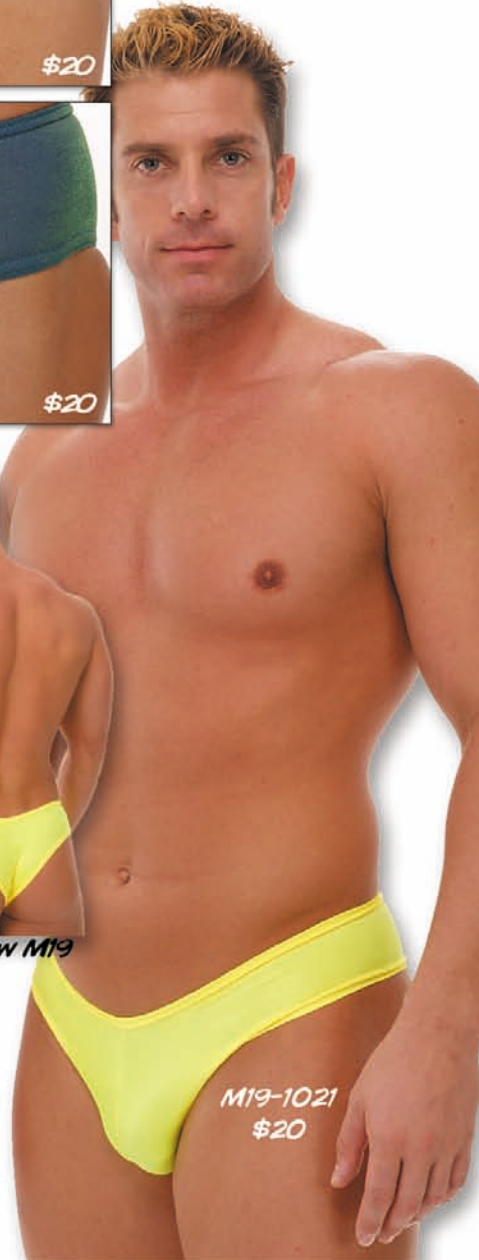
THE IN-STOCK M19'S ARE \$20, THE SILK THONGS ARE \$12.

STOCK SIZES : XS THRU XXL

THE M19'S ARE NYLON/LYCRA®, THE THONGS ARE WASHABLE SILK.

THE ITEMS ON THIS PAGE ARE OFFERED IN THESE COLORS AND PRINTS :

- 1021 WET LOOK SUNSHINE YELLOW
- 1452 HEAVYWEIGHT BLACK TRICOT (WEB VIEW)
- 1517 INFERNO PRINT STRETCH MESH (SEMI-SEE-THRU)
- 3003 WET LOOK MIDNIGHT BLUE FRENCH TRICOT
- 4102 HALEIWA SURF
- 5501 IRIDESCENT LIME/AQUA STRETCH MESH (SEMI-SEE-THRU)
- 5801 METALLIC KELLY GREEN MYSTIQUE (WEB VIEW)
- 08-4001 RED WASHABLE SILK
- 08-4002 ROYAL BLUE WASHABLE SILK
- 08-4003 BURGUNDY WASHABLE SILK (WEB VIEW)
- 08-4007 BLACK WASHABLE SILK
- 08-4009 WHITE WASHABLE SILK
- 08-4010 COBRA WASHABLE SILK
- 08-4011 LEOPARD WASHABLE SILK



**M40...: JAMMER SWIMSUIT**

THE M40 IS A NEW SUIT FOR US THIS YEAR THAT IS DESIGNED LIKE THE "JAMMER" STYLE SWIM-SHORT (COMPLETE WITH DRAWSTRING AND SUPER LOW CUT) MADE POPULAR IN THIS PAST YEAR'S OLYMPICS.

**STOCK SIZES : XS THRU XXL**

**A10...: GYM SHORT**

**G1...: GYM/STREET TEE**

**G2...: GYM TANK**

**G12...: MUSCLE TANK**

ALL FABRICS ARE NYLON/LYCRA® OR COTTON/LYCRA®

VISIT OUR WEBSITE FOR MORE COLOR AND FABRIC CHOICES...WWW.SKINZWEAR.COM

- 1519 BLACK WAVES FRENCH MESH
- 1307 BLACK COTTON/LYCRA®
- 4302 CHOCOLATE COTTON/LYCRA®
- 4007 WET LOOK BLACK FRENCH TRICOT
- 4303 SAND COTTON/LYCRA®
- 5401 SLINKY ROYAL BLUE
- 5407 SLINKY BLACK
- 5502 BLACK EYELET COTTON/LYCRA®
- 5503 SPARKLE-SHEEN WHITE



CALL 727-441-8789 TO SPECIAL ORDER THESE ITEMS IN DIFFERENT FABRICS OR ODD SIZES.

CODE	NAME	BASE PRICE	PAGE
<b>MENS SWIMWEAR :</b>			
M1R	CUT AWAY STRING THONG	\$28.00	13
M2R	STRING THONG	\$28.00	10
M3	FITTED BIKINI	\$26.00	12
M9	BOXER	\$35.00	4
M13	BANDED THONG	\$26.00	2
M14	LOW BRIEF	\$26.00	10
M16	ADJ SKINNY THONG	\$28.00	2
M17	FITTED REAR RIO	\$28.00	10
M18	HOT SHORTS	\$20.00	5
M21	CUT AWAY RIO	\$26.00	14
M24	BANDED BIKINI	\$26.00	4
M25	SKINNY SIDE THONG	\$28.00	9
M26	SMOOTH BIKINI	\$26.00	3
M27	SKINNY SIDE RIO	\$26.00	7
M28	RIO	\$26.00	8
M29	SUPER LOW RIO	\$26.00	11
M31	Y BACK THONG	\$28.00	6
M32	RELEASE THONG	\$28.00	10
M33	BANDED RIO	\$26.00	8
M36	RIVIERA BRIEF	\$26.00	4
M37	TANGA	\$26.00	12
M38	LOWRISE BOXER	\$34.00	2
M40	SWIM JAMMERS	\$40.00	15
<b>WOMENS SWIMWEAR :</b>			
B1R	CUT AWAY STRING THONG	\$28.00	19
B3	TIE THONG	\$26.00	22
B4	THONG	\$26.00	20
B5	RIO	\$26.00	24
B7	SKINNY SIDE RIO	\$28.00	25
B8	BRAZILIAN	\$26.00	26
B9	SKINNY SIDE BRAZILIAN	\$28.00	27
B10	SIDE TIE BRAZILIAN	\$26.00	26
B11	CALIFORNIA MODERATE	\$26.00	28
B12	HIGH WAIST FULL CUT	\$26.00	28
B13	Y PANEL FULL CUT	\$30.00	28
B14	RHINESTONE BIKI	\$37.00	19
B17	RIVIERA	\$28.00	27
B20	MONTÉ CARLO	\$26.00	28
B22	FRENCH THONG	\$26.00	22
B23	CANCLUN RIO	\$28.00	24
B24	RELEASE THONG	\$28.00	20
B25	FRINGE THONG	\$28.00	23
B26	FRENCH BIKINI	\$28.00	23
B27	BANDED RIO	\$26.00	24
B28	BUTTON RELEASE THONG	\$28.00	20
B29	TANKINI FULL CUT	\$26.00	29
B30	LOLITA	\$28.00	22
B32	TANGA	\$28.00	22
B34	MICRO MICRO STRING THONG	\$24.00	21
F2	ONE PIECE RIO	\$55.00	21
F4	ONE PIECE CRISS CROSS BRAZILIAN	\$50.00	29
F5	ONE PIECE CRISS CROSS BRAZILIAN	\$50.00	29
F6	ONE PIECE CRISS CROSS MODERATE	\$55.00	21
F7	CONTEST KILLER	\$55.00	21
F8	VEGAS	\$55.00	21
F11	TRIANGLE TOP	\$26.00	19,20
F13	BANDED SKIMPY TRIANGLE TOP	\$26.00	24
F14	BANDED TRIANGLE TOP	\$26.00	24
F15	STRAP UNDERWIRE TOP	\$40.00	25,28
F18	HALTER UNDERWIRE TOP	\$40.00	26,27
F19	FULL CUP UNDERWIRE TOP	\$40.00	28
F17	RIVIERA TOP	\$28.00	27
F20	MONTÉ CARLO TOP	\$28.00	28
F21	BRAZILIAN TRIANGLE TOP	\$26.00	19,20
F22	BOX TOP	\$26.00	22
F23	TANKINI TOP	\$45.00	28
F30	LOLITA TOP	\$28.00	22
F32	PANELED TRIANGLE TOP	\$28.00	22
F34	MICRO MICRO TOP	\$24.00	21
<b>GYM &amp; STREETWEAR :</b>			
A1	GYM SHORTS	\$25.00	15
A4	TIGHTS	\$35.00	30
C1	CAFSUIT	\$70.00	31
D1	STRING CAFSUIT	\$60.00	31
D4	TANK MINI DRESS	\$35.00	31
G1	STRETCH TEE SHIRT	\$25.00	15
G2	STRING TANK	\$18.00	5
G12	ARMOR TANK	\$20.00	15

FABRIC CODE	NAME	EXCEPT AS NOTED !	PAGE/S
1002	WET LOOK HOT PINK		10,16
1003	WET LOOK ROYAL BLUE		11,24,27
1008	WET LOOK RED		4,16,24
1021	WET LOOK SUNSHINE YELLOW		4,11,14,25,26
1023	WET LOOK NEON LIME		10,13
1024	WET LOOK PURPLE		23,26
1026	WET LOOK BURGUNDY		4,22,25,27
1170	HAWAIIAN FLORAL TRICOT®		17,23,29
1307	BLACK COTTON LYCRA®		
1308	LEATHER GREY COTTON LYCRA®		
1452	HEAVYWEIGHT BLACK TRICOT®		2,4,11,17,25
1459	CHARTRUISE TRICOT®		6,9,16,24
1463	NARY BLUE TRICOT®		24
1474	NEON LIME TRICOT®		4,6,8,10,17
1499	HEAVYWEIGHT WHITE TRICOT®		
1500	ROYAL BLUE STRETCH MESH		
1501	WHITE BLUE STRETCH MESH		
1502	CHARTRUISE STRETCH MESH		
1503	NEON LIME STRETCH MESH		
1505	HOT PINK STRETCH MESH		
1506	NEON ORANGE STRETCH MESH		
1507	BLACK STRETCH MESH		
1508	RED STRETCH MESH		
1509	SLAYER MESH		
1511	PURPLE STRETCH MESH		
1512	AQUA STRETCH MESH		
1517	INFERNIO STRETCH MESH		14
1519	BLACK WAVES STRETCH MESH		
1572	CHARTRUISE FLORAL STRETCH MESH		
1573	CORAL STRETCH MESH		23
1574	PULIM STRETCH MESH		22
1814	CLEARCOAT GATOR		22
1875	BENGALI LIME METALLIC		
2126	AYALON		
2309	NARY DENIM COTTON LYCRA®		
233	RACING MINI CHECKERBOARD		
2369	JASPE BLACK POLY/COTTON LYCRA®		
2456	POWDER PUFF PINK TRICOT®		
2457	DARK TEAL		
2462	ORANGE TRICOT®		
2516	MARDI GRAS STRETCH MESH		
2516	NARY BLUE ZIPPER MESH		
2812	METALLIC GOLD		
2813	METALLIC SILVER		
2814	COPPER MYSTIQUE ON MANGO		
2850	CLEARCOAT JUPITER		
2852	CLEARCOAT PURPLE PYTHON		3,4,5,25
3001	WET LOOK TURQUOISE FRENCH TRICOT®		3,8,12
3002	WET LOOK TITANIUM FRENCH TRICOT®		2,4,16,28
3003	WET LOOK MIDNIGHT BLUE FRENCH TRICOT®		8,29
3201	BLUE LIGHTNING TRICOT®		
3203	GREY BABY LEOPARD		
3205	PRISM SUPPLEX®		
3210	ZEBRA ON LIME SUPPLEX®		29
3211	RAZZBERRY HIBISCUS ON BLUE TRICOT®		
3216	CHARTRUISE HIBISCUS ON LIME		2,10,24,27
3217	LIME LIGHTNING TRICOT®		12,28
3218	LIQUID BANANAS		
3477	NUDE TRICOT®		8
3739	CUBE TEXTURED WHITE SUPPLEX		
3802	BLACK GATOR		
4001	WET LOOK WHITE FRENCH TRICOT®		
4007	WET LOOK BLACK FRENCH TRICOT®		
4101	GARDEN OF DELIGHTS		
4102	HALEIWA SURF		
4103	GERRY JARGIA		
4104	MOLECULE BLUE		
4105	TIGER		
4106	KISS ME COMIC		
4108	BON VOYAGE		
4109	LIME WATER COLOR TRICOT®		
4110	HOT TROPICS TRICOT®		
4111	COOL TROPICS TRICOT®		
4112	LAVA TRICOT®		
4115	SOUTH BEACH RHYTHM		
4116	DEEP BLUE SEA		
4119	FOREST PEBBLES TRICOT®		
4120	CHARTRUISE HIBISCUS ON HOT PINK		

4301	ROYAL BLUE COTTON LYCRA®		
4302	CHOCOLATE MOCHA COTTON LYCRA®		
4303	SAND COTTON LYCRA®		32
4401	SHEER HUNTER GREEN		32
4402	SUPER SOFT BABY BLUE TRICOT®		
4403	MINT PEPPERMINT PARTY TRICOT®		26
4520	BABY LEOPARD STRETCH MESH		
4521	HOT PINK STRETCH LACE		
4522	NUDE STRETCH MESH		8
4523	HAWAIIAN MOONSET SILVER MIST		6
4708	DAK HEATHER GREY SUPPLEX®		
4801	KILIMANJARO GOLD MIST		
4802	WILD PANTHER CRIMSON METALLIC		
4803	KALEIDOSCOPE RED/RED		
4804	KALEIDOSCOPE ORANGE/FUSCHIA		
4806	KALEIDOSCOPE PURPLE/ROYAL		
4807	CLEARCOAT RAINWIDE		
4808	CLEARCOAT BUCKSKIN		30
4848	KALEIDOSCOPE SLAYER/WHITE		2,23
4862	GLOSS PASTEL PINK STRETCH VINYL		9,17
4863	GLOSS BABY BLUE STRETCH VINYL		30,31
4864	GLOSS SUNSHINE YELLOW STRETCH VINYL		17,31
4868	GLOSS TURQUOISE SUPER STRETCH VINYL		21,30,31
4869	GLOSS HOT PINK SUPER STRETCH VINYL		31
4870	GLOSS NEON ORANGE SUPER STRETCH VINYL		31
4871	GLOSS NEON LIME SUPER STRETCH VINYL		30
5025	WET LOOK NEON ORANGE		5,7,17,27
5101	AQUA FLORAL ON SEAFOAM		5,9,27
5102	WHITE HIBISCUS ON HOT PINK		5,9,23,25
5103	MAUI PINEAPPLE		7,11,19,23
5104	CAMO		4,26,29
5105	BUBBLES		5,8,17,28
5106	RED & WHITE STRIPES TRICOT®		2,12,22
5107	SKULLS TRICOT®		4,29
5108	CLOUDS TRICOT®		4,6,26
5109	TEAL FERNS		2,8,28
5110	WHITE HIBISCUS ON NARY		4,11,26
5111	WHITE HIBISCUS ON RUBY RED		3,10,22,26
5112	WHITE FLORAL ON BLACK		5,22,26,29
5113	GREY BLACK ZEBRA		3,9,28
5114	FLAGS TRICOT®		3,7
5115	WHITE STARS ON NAVY TRICOT®		2,12,22
5117	PINK ISLAND PALMS		3,7,12,27
5119	COSMIC WAVE GREEN TRICOT®		11,27,29
5119	COSMIC WAVE BLUE TRICOT®		2,5,27,28
5120	EMERALD FERNS		
5121	AMAZON JUNGLE		
5122	GREEN PALMS		
5123	ALL THAT JAZZ TRICOT®		
5124	RIBBED CHEETAH		
5125	VOLLEY STRIPE		
5126	SHEER RIBBED LEOPARD		
5127	BLACK FLORAL®		
5128	RIBBED TROPICS®		
5129	SEA LEVELS		
5130	PALMS ON MINT®		
5131	SUNSHINE ORCHIDS®		
5132	GOLDEN SEA OATS®		
5401	SLINKY ROYAL BLUE		15
5407	SLINKY BLACK		15
5402	MARTE CORAL TRICOT TRICOT®		2,7,9,22
5500	WAYEY WHITE STRETCH MESH		
5501	IRIDESCENT LIME/AQUA STRETCH MESH		3,17,14
5502	BLACK EYELET		
5503	SPARKLESHEEN WHITE		8,15
5504	WAYEY ROYAL STRETCH MESH		
5505	YELLOW LACE		
5507	WAYEY BLACK STRETCH MESH		
5801	METALLIC KELLY MYSTIQUE		14,21
5802	METALLIC OCEAN BLUE MYSTIQUE		10,16,21
5803	HOLOGRAPHIC LAPIS SHATTERED GLASS		16,21
5804	HOLOGRAPHIC GOLD SHATTERED GLASS		6,21
5805	CARMELIZED LEOPARD SKIN		
5806	WET LOOK MARS TRICOT®		5,22
5807	GLOSS BLACK SUPER STRETCH VINYL		
5808	GLOSS RED SUPER STRETCH VINYL		
5809	WHITE SNAKE		
5812	LIQUID GOLD		5,7,10,16,31
5813	LIQUID SILVER		10,17,31





SWIMWEAR • GYMWEAR • CLUBWEAR • LINGERIE  
SHOES • POSING SUITS • HATS • BEACH TOWELS

WWW.SKINZWEAR.COM • WWW.POSINGSWIMSUITS.COM • WWW.4PLAYSEXYLINGERIE.COM

WAIST SIZING (IN INCHES) : FOR MEN AND UNI-SEX ITEMS :

XXS\* = 21-23 XS = 24-26 S = 27-29 M = 30-32 L = 33-35 XL = 36-40 XXL = 41-44 XXXL\* = 45-47  
MEN'S CHEST XS = 34-35 S = 36-38 M = 39-40 L = 41-42 XL = 43-44 XXL = 45-46

WOMEN'S : (SIZES IN INCHES)

SKINZ	XX-SMALL*	X-SMALL	SMALL	MEDIUM	LARGE	X-LARGE	XX-LARGE*
U.S.		(1-3)	(4-7)	(8-11)	(12-14)	(15-16)	(18-20)
BUST	(27-29)	(31-32)	(34-35)	(37-38)	(40-41)	(43-45)	(46-48)
CUP		(A)	(B)	(C)	(D)	(DD)	(E)
WAIST	(19-21)	(22-23)	(24-26)	(27-29)	(31-33)	(35-37)	(38-40)
HIPS	(29-31)	(32-34)	(35-37)	(38-40)	(41-43)	(45-47)	(48-50)
EUROPEAN (29-31)		(34-36)	(38)	(40-42)	(44-46)	(48)	(50)

PLEASE NOTE ; \* NOT A STOCKED SIZE. NOT ALL FABRICS BEHAVE THE SAME. WET LOOK AND STRETCH VINYL FABRICS ARE LESS STRETCHY. THEY MAY FIT MORE SNUG AND YOU MAY WANT TO ORDER A SIZE LARGER. IF YOU ARE CONFUSED ABOUT THE SIZING OF AN ITEM,

CALL 727-441-8789 OR E-MAIL US AT : SKINZ@SKINZWEAR.COM

### SHIPPING POLICIES :

IF YOU LIVE IN ONE OF THE 48 STATES, WE WILL PICK EITHER FEDEX, UPS OR U.S. PRIORITY MAIL TO SHIP YOUR PACKAGE. IF YOU LIVE IN HAWAII, ALASKA, PUERTO RICO, OR HAVE AN APO OR PO BOX, WE WILL SHIP U.S. PRIORITY MAIL. THE PRICES TO THE RIGHT CAN CHANGE IF OUR SHIPPING COMPANIES DECIDE TO RAISE PRICES AFTER THIS CATALOG HAS BEEN PRINTED. TRUST ME, THEY WON'T BE LOWERING PRICES. YOU CAN TRACK YOUR UPS (WWW.UPS.COM) OR FEDEX (WWW.FEDEX.COM) PACKAGES ON-LINE. SEND US AN E-MAIL WITH YOUR LAST NAME AND ZIP CODE AND WE WILL SEND YOU YOUR TRACKING NUMBER. AS A DISCLAIMER (EXCUSE), WE MAKE AND SELL SWIMWEAR. WE ARE NOT A SHIPPING COMPANY. WE USE UPS, FEDEX AND THE U.S. POSTAL SERVICE. IF THEY SCREW UP, YELL AT THEM, THEN LET US KNOW, WITH A KIND ATTITUDE. WE ARE ALWAYS TRYING TO UPGRADE THE SHIPPING COMPANIES WE USE. DO NOT WAIT UNTIL THE LAST MINUTE TO PLACE YOUR ORDER FOR YOUR VACATION. PLAN ON THE SHIPPING COMPANIES TAKING AN EXTRA DAY OR TWO. THEY ARE PEOPLE TOO, AND NOT ALWAYS PERFECT.

INTERNATIONAL SHIPPING STARTS AT \$18.00 FOR AN ORDER OF \$100 OR LESS VIA U.S. GLOBAL PRIORITY TO MOST COUNTRIES. SOMETIMES WE HAVE TO SHIP VIA U.S. REGISTERED AIRMAIL. FASTER, MORE EXPENSIVE CARRIERS ARE AVAILABLE. CALL OR E-MAIL US FOR MORE SPECIFIC QUOTES. THE ABOVE SHIPPING CHARGES INCLUDE : THE PACKAGING MATERIAL, THE FREIGHT FEE, THE PACKAGING LABOR, THE PAPERWORK LABOR, THE TRAVEL TO THE POSTAL CENTERS AND THE WAIT AT THE POSTAL CENTERS. BE PREPARED TO PAY A MINIMUM OF \$30.00 FOR FEDEX, UPS AND DHL INTERNATIONAL SERVICES. ALL DUTIES AND TAXES ARE PAID BY THE CUSTOMER (THIS MEANS YOU!)

REMEMBER, WE CAN'T SHIP WHAT WE DON'T HAVE, SO IF YOU NEED IT QUICK, VERIFY THAT IT IS IN STOCK ! 1 (727) 441-8789 OR SKINZ@SKINZWEAR.COM

OUR AIM IS TO MAKE THE HIGHEST QUALITY AND FINEST FITTING SWIMWEAR AND WORKOUT WEAR. OUR PRICES ARE REASONABLE. OUR PRODUCT IS THE VERY BEST YOU CAN BUY, NO MATTER HOW MUCH MONEY YOU HAVE TO SPEND. WE HAVE BEEN DOING THIS FOR OVER 19 YEARS. LET US SHOW YOU WHY OUR CUSTOMERS ARE OUR BEST SALES PEOPLE!

2005

### SHIPPING RATE GUIDE :

U.S., PUERTO RICO, APO'S & CANADA

ORDER TOTAL LESS THAN \$50.00	\$7.50
ORDER TOTAL \$50 TO \$99	\$8.50
ORDER TOTAL \$100 OR MORE	\$9.50

THE 48 STATES WILL SHIP : FEDEX, UPS, OR USPS.  
HAWAII, ALASKA, PUERTO RICO, APO AND PO BOXES WILL SHIP : U.S. PRIORITY MAIL.

TO UPGRADE TO FEDEX OR UPS 2 DAY	ADD \$10.00
TO UPGRADE TO FEDEX OR UPS NEXT DAY	ADD \$20.00
FEDEX/UPS SATURDAY* DELIVERY	ADD \$15.00

\* THE SATURDAY DELIVERY FEE OF \$15.00 IS IN ADDITION TO THE UPGRADE FEE.  
SATURDAY UPGRADES NOT AVAILABLE TO CANADA, APO AND PO BOXES.

INTERNATIONAL :

INTERNATIONAL VIA U.S. GLOBAL PRIORITY	\$18.00 +
INTERNATIONAL VIA UPS OR FEDEX	\$30.00 +

INTERNATIONAL RATES VARY BY SIZE, WEIGHT AND DISTANCE TRAVELED.  
CALL 727-441-8789 FOR SPECIFIC PRICES.

## ON-LINE SHOPPING

[HTTP://WWW.SKINZWEAR.COM](http://www.skinzwear.com)

- NEW PRODUCTS
- FRONT & BACK VIEWS
- DISCONTINUED STYLES
- SALE ITEMS

[WWW.POSINGSWIMSUITS.COM](http://www.posingswimsuits.com)

• BODYBUILDING COMPETITION SUITS

[WWW.4PLAYSEXYLINGERIE.COM](http://www.4playsexylingerie.com)

• LINGERIE • SILK THONGS • SHOES



# PAPER ORDER FORM

MAIL TO : SKINZ • 2027 GULF TO BAY BLVD. • CLEARWATER, FL., 33765-3711

E-MAIL • SKINZ@SKINZWEAR.COM FAX • 727-442-2476

PAYMENT, RETURNS & ACCELERATED SHIPPING

ALL PRICES IN THIS CATALOG ARE IN U.S. DOLLARS. WE ACCEPT: VISA, MASTERCARD, DISCOVER, AMERICAN EXPRESS, PAY PAL, MONEY ORDERS, BANK WIRES, AND CHECKS. WE RUN PERSONAL CHECKS WITH STREET ADDRESSES THROUGH THE CERTEGY CHECK SYSTEM FOR APPROVAL AND IMMEDIATE PROCESSING. PRODUCTS MUST BE RETURNED WITHIN 30 DAYS OF PURCHASE, FOR EXCHANGE ONLY. YOU MUST CALL FOR A RETURN AUTHORIZATION NUMBER. ITEMS FOR EXCHANGE MUST BE UNUSED WITH TAGS ATTACHED AND THE RETURN AUTHORIZATION NUMBER ON THE OUTSIDE OF THE BOX. NO REFUNDS. ALL SHIPPING AND INSURANCE CHARGES WILL BE PAID BY YOU. SPECIAL CUT ITEMS AND ITEMS ORDERED UNLINED ARE NOT RETURNABLE. ACCELERATED SHIPPING APPLIES TO SHIPPING TIME ONLY, WE CAN'T SHIP WHAT WE DON'T HAVE. CHECK STOCK. GIVE US A SECOND CHOICE, IF YOU CAN, TO SPEED YOUR ORDER. NO RUSH SEWING AVAILABLE!

\*\*\* NOTE : WE HAVE A SECURE CUSTOM ORDER FORM ON-LINE WITHIN OUR WEB-SITE \*\*\*

ADD A \$5.00 \*SPECIAL CHARGE\* TO ANY ORDER OF AN ITEM NOT STOCKED. THIS INCLUDES UNLINED ITEMS. IF YOU WANT US TO LEAVE OUT THE LINING OF ANY SUIT OR PIECE WHERE LINING IS STANDARD, WRITE \*UNLINED\* IN THE SPECIAL CHARGE SPACE.

PAGE # 5 STYLE M18 COLOR 6071 2ND CHOICE 6992 SIZE S SPECIAL CHARGE 5.00 UNLINED TOTAL PRICE \$ example 32.00

PAGE # \_\_\_\_\_ STYLE \_\_\_\_\_ COLOR \_\_\_\_\_ 2ND CHOICE \_\_\_\_\_ SIZE \_\_\_\_\_ SPECIAL CHARGE \_\_\_\_\_ TOTAL PRICE \$ \_\_\_\_\_

PAGE # \_\_\_\_\_ STYLE \_\_\_\_\_ COLOR \_\_\_\_\_ 2ND CHOICE \_\_\_\_\_ SIZE \_\_\_\_\_ SPECIAL CHARGE \_\_\_\_\_ TOTAL PRICE \$ \_\_\_\_\_

PAGE # \_\_\_\_\_ STYLE \_\_\_\_\_ COLOR \_\_\_\_\_ 2ND CHOICE \_\_\_\_\_ SIZE \_\_\_\_\_ SPECIAL CHARGE \_\_\_\_\_ TOTAL PRICE \$ \_\_\_\_\_

PAGE # \_\_\_\_\_ STYLE \_\_\_\_\_ COLOR \_\_\_\_\_ 2ND CHOICE \_\_\_\_\_ SIZE \_\_\_\_\_ SPECIAL CHARGE \_\_\_\_\_ TOTAL PRICE \$ \_\_\_\_\_

PAGE # \_\_\_\_\_ STYLE \_\_\_\_\_ COLOR \_\_\_\_\_ 2ND CHOICE \_\_\_\_\_ SIZE \_\_\_\_\_ SPECIAL CHARGE \_\_\_\_\_ TOTAL PRICE \$ \_\_\_\_\_

PAGE # \_\_\_\_\_ STYLE \_\_\_\_\_ COLOR \_\_\_\_\_ 2ND CHOICE \_\_\_\_\_ SIZE \_\_\_\_\_ SPECIAL CHARGE \_\_\_\_\_ TOTAL PRICE \$ \_\_\_\_\_

VISIT OUR WEB-SITE TO DOWN LOAD MORE ORDER FORMS

SUB-TOTAL \$ \_\_\_\_\_

CUSTOMER I.D. NUMBER \_\_\_\_\_ FROM MAILING LABEL

NAME : \_\_\_\_\_ (PLEASE PRINT)

STREET ADDRESS : \_\_\_\_\_ APT # \_\_\_\_\_

CITY \_\_\_\_\_ STATE \_\_\_\_\_ ZIP \_\_\_\_\_

COUNTRY \_\_\_\_\_ DAYTIME PHONE ( \_\_\_\_\_ ) \_\_\_\_\_

HOME PHONE ( \_\_\_\_\_ ) \_\_\_\_\_ FAX ( \_\_\_\_\_ ) \_\_\_\_\_

E-MAIL ADDRESS \_\_\_\_\_ @ \_\_\_\_\_

TAX (FLORIDA RESIDENTS ONLY - 7%) \$ \_\_\_\_\_

CALCULATED SHIPPING \$ \_\_\_\_\_

SHIPPING UPGRADE \$ \_\_\_\_\_

SATURDAY DELIVERY UPGRADE \$ \_\_\_\_\_

TOTAL ENCLOSED \$ \_\_\_\_\_

Use the sub-total from above and the chart on page 17 to calculate shipping charges. Add in any shipping upgrade charges for your order total. Florida residents must add in 7% sales tax.

METHOD OF PAYMENT : PLEASE CHECK THE APPROPRIATE BOX.

THEN COMPLETE THE REST.

CHARGE CARD  DEBIT CARD  MONEY ORDER  CHECK

CHARGE CARD # : \_\_\_\_\_

EXPIRATION DATE : \_\_\_\_\_ SECURITY CODE : \_\_\_\_\_ WHAT'S THIS ???

The security code is the 3 digit number inside the signature block on the back of your card. It is to prevent people from using stolen credit card numbers. If they don't have the card in their possession, they won't know this number. It is for your and our protection. The billing address below is the address your charge card bills are sent to (if different from above).

BILLING ADDRESS \_\_\_\_\_

CITY \_\_\_\_\_ STATE \_\_\_\_\_ ZIP CODE \_\_\_\_\_

SIGNATURE : \_\_\_\_\_ (please sign)

CHECK ONE :

SHIP WHAT YOU HAVE, CANCEL REST

SHIP 100%, I'LL WAIT !

SKINZ® THE NAME/LOGO IS OWNED BY :

SKINZWEAR.COM,INC

2027 GULF TO BAY BLVD.

CLEARWATER, FLORIDA 33765-3711

727-441-8789 (VOICE)

727-442-2476 (FAX)

SKINZ@SKINZWEAR (E-MAIL)



CRAFTED WITH PRIDE IN THE U.S.A.

**B1R...: STRING THONG**

THE B1R IS SEXY AND SMALL WITH AN ADJUSTABLE FRONT (SEE B1R-1459) AND STRING THONG BACK. IT HAS EITHER A SILVER OR GOLD TRI-RING REAR ORNAMENT FOR A CLASSY LOOK.

**B14...: RHINESTONE STRING THONG**

THE B14 IS A B1R STRING THONG WITH A RHINESTONE "Y" ORNAMENT. THE SUITS ON THIS PAGE ARE OFFERED IN THESE COLORS AND PRINTS:  
 1002 WET LOOK HOT PINK  
 1459 CHARTREUSE TRICOT  
 3003 WET LOOK MIDNIGHT BLUE FRENCH TRICOT

**T1...: TRIANGLE TOP**

THE T1 IS A SYMMETRICAL ADJUSTABLE TOP WITH NECK AND TORSO TIES.

**T21...: BRAZILIAN TRIANGLE TOP**

THE T21 IS AN ASYMMETRICAL ADJUSTABLE TOP WITH NECK AND TORSO TIES.

STOCK SIZES: XS THRU XL

ALL FABRICS ARE NYLON/LYCRA®, ALL SUITS LINED IN FRONT

- 5802 METALLIC OCEAN BLUE MYSTIQUE
- 5803 LAPIS HOLOGRAPHIC SHATTERED GLASS ON BLACK
- 5807 HIPSTER SUPER STRETCH BLACK VINYL
- 5809 WHITE SNAKE (EMBOSSED CURE)



S2-1572  
\$19



GOLD RING



RHINESTONE



SILVER RING



T1-5807 \$26  
B14-5807 \$36



T1-5803 \$26  
B14-5803 \$36



T21-1002 \$26  
B1R-1002 \$28



S2-1500  
\$19



REAR VIEW B1R



AS-5806 \$4

AS-1002 \$4



T21-5802 \$26  
B1R-5802 \$28

AS-5802 \$4



T1-1459 \$26  
B1R-1459 \$28

AS-1459 \$4



T1-5809 \$26  
B1R-5809 \$28

AS-5809 \$4



FABRIC 5809



T1-3003 \$26  
B1R-3003 \$28

**B4....: THONG**

THE CLASSIC WOMAN'S SWIMSUIT THONG.

**B24....: QUICK RELEASE THONG (HOOK)**

THE B4 WITH EITHER TWIN (GOLD OR SILVER) QUICK RELEASE HOOKS.

**B28....: QUICK RELEASE THONG (BUTTON)**

THE B4 WITH TWIN EURO STYLE BLACK BUTTON QUICK RELEASES

**T1....: TRIANGLE TOP**

THE T1 IS A SYMMETRICAL ADJUSTABLE TOP WITH NECK AND TORSO TIES.

**T21....: BRAZILIAN TRIANGLE TOP**

THE T21 IS AN ASYMMETRICAL ADJUSTABLE TOP WITH NECK AND TORSO TIES.

STOCK SIZES : XS THRU XL, ALL SUITS LINED IN FRONT  
ALL FABRICS ARE NYLON/LYCRA®, TOPS AND  
BOTTOMS ORDERED SEPARATELY !

THE SUITS ON THIS PAGE ARE OFFERED IN THESE COLORS AND PRINTS :

- |      |                                      |                |
|------|--------------------------------------|----------------|
| 1008 | WET LOOK RED                         |                |
| 1170 | HAWAIIAN FLORAL                      | (SILVER HOOK)  |
| 1452 | HEAVYWEIGHT BLACK TRICOT             | (WEB VIEW)     |
| 1499 | HEAVYWEIGHT WHITE TRICOT             | (WEB VIEW)     |
| 4007 | WET LOOK FRENCH TRICOT BLACK         | (SILVER HOOK)  |
| 4848 | HOLOGRAPHIC SHATTERED GLASS ON WHITE | (BLACK BUTTON) |
| 4864 | SUPER STRETCH CAUTION YELLOW VINYL   | (GOLD HOOK)    |
| 5025 | WET LOOK NEON ORANGE                 | (GOLD HOOK)    |
| 5812 | LIQUID GOLD                          |                |



**F2...: ONE PIECE RIO**

THE F2 ONE PIECE SUIT BOASTS A CLEAVAGE ENHANCING PLUNGING NECKLINE HELD TOGETHER WITH A SILVER ACCESSORY, AND IS COUPLED WITH A LOW RIO BACK.

**F7...: CONTEST KILLER (ONE SIZE)**

WOW! SKIMPY CONTEST WINNER, ADJUSTABLE STRINGS

**F8...: VEGAS (ONE SIZE)**

ONE PIECE WOW! SUIT WITH NECK & BACK TIES.

**B34...: MICRO MICRO STRING THONG**

WOW! THE SMALLEST STRING THONG (SIDE TIES) POSSIBLE!.

**T34...: MICRO MICRO TRIANGLE**

WOW! THE SMALLEST TRIANGLE TOP POSSIBLE!.

THE SUITS ON THIS PAGE ARE OFFERED IN THESE COLORS AND PRINTS :

- 2814 METALLIC COPPER MYSTIQUE ON MANGO
- 3803 METALLIC PEACH ON SALMON
- 4007 WET LOOK BLACK FRENCH TRICOT®
- 4868 HIPSTER SUPER STRETCH TURQUOISE VINYL
- 5801 METALLIC KELLY GREEN MYSTIQUE ON KELLY GREEN
- 5802 METALLIC OCEAN BLUE MYSTIQUE ON BLUE
- 5803 HOLOGRAPHIC LAPIS SHATTERED GLASS ON BLACK
- 5804 HOLOGRAPHIC GOLD SHATTERED GLASS ON CHOCOLATE (WEB VIEW)
- 5813 LIQUID SILVER

STOCK SIZES : XS THRU XL  
ALL FABRICS ARE NYLON/LYCRA®,

BIKINI BITE KEEPS SEXY SWIMWEAR AND DRESSES IN PLACE. SUPERIOR HOLDING POWER. GENTLE TO THE SKIN. PERFECT FOR BIKINI CONTESTS, POSE DOWNS AND PHOTO SHOOTS, WILL NOT STAIN FABRIC. WASHES OFF WITH SOAP AND WATER. 3 OZ. SUGGESTED FOR THE F7, F8 AND T34/B34 SWIMSUITS.



BB-1001 \$10



REAR VIEW F2.....F7.....F8.....B34



F2-5802 \$55

F2-3803 \$55

F2-5801 \$55

AS-5802 \$4

AS-3803 \$4



F8-5803 \$55

F8-5813 \$55

F7-2814 \$55

F7-4868 \$55

T34-4007 \$24  
B34-4007 \$24

AS-5803 \$4

**B3...: SIDE TIE THONG**

B3 THONG IS A ONE SIZE, SIDE TIE, BANDED THONG.  
THIS IS A GREAT SUIT FOR BIKINI CONTESTS. EASY TO FIT !

**B22...: FRENCH THONG**

THE B22 IS A VERY LOW CUT FRENCH INSPIRED LADIES THONG.

**B30...: LOLITA**

B30 IS THE CLASSIC LOW CUT SWIMBOTTOM. GENEROUS SIDE TIES.  
WITH T30 BRINGS, BACK THE SEXY-CLASSY DESIGNS OF HOLLYWOOD.

**32...: TANGA**

COMFY SIDE DESIGN, LOW RIDING THONG WITH ACCENT PANELS.

**T1...: TRIANGLE TOP**

THE T1 IS A SYMMETRICAL ADJUSTABLE TOP WITH NECK AND TORSO TIES.

**T4...: BANDED TRIANGLE**

THE T1 WITH ACCENT BINDING TO COMPLIMENT THE B3 BOTTOM.

**T22...: BOXTOP**

UNIQUE SQUARE PANEL WITH SEXY OPENING BETWEEN.

**T30...: LOLITA TOP**

SOFT FRONT AND NECK TIES ACCENTUATE THIS HOLLYWOOD HALTER.

**T32...: PANEL TRIANGLE**

TRIANGLE TOP (T1) WITH PANELS TO COMPLIMENT THE B32 BOTTOM

STOCK SIZES : XS THRU XL, ORDER ITEMS SEPARATELY, ALL FABRICS HERE ARE NYLON/LYCRA®

THE SUITS ON THIS PAGE ARE OFFERED IN THESE COLORS AND PRINTS :

- |   |                                 |                         |
|---|---------------------------------|-------------------------|
| 1026 WET LOOK BURGUNDY                  | 5111 WHITE HIBISCUS ON RUBY RED | 5402 MATTE CORAL TRICOT |
| 3739 CUBETEXTURED WHITE SUPPLEX         | 5115 WHITE STARS ON NAVY        | 5806 CIRE® MARS TRICOT  |
| 5106 RED AND WHITE STRIPES              |                                 |                         |
| 5112 WHITE FLORAL ON BLACK              |                                 |                         |
| 4110 HOT TROPICS TRICOT® (WEBSITE ONLY) |                                 |                         |



S2-1573 \$19  
S2-1574 \$19  
S2-1507 \$19

FABRIC 3739

ALL SARONGS (S2) ARE \$19. ALL SCRUNCHIES (AS) ARE \$4.



REAR VIEW B3 REAR VIEW B22 REAR VIEW B32 REAR VIEW B30



T22-3739 \$28  
B22-3739 \$26

T1-1026 \$26  
B22-1026 \$26

T32-5106/5115 \$28  
B32-5106/5115 \$28

AS-3739 \$4

AS-1026 \$4

AS-5115 \$4  
AS-5106 \$4



T30-5402 \$30  
B30-5402 \$28

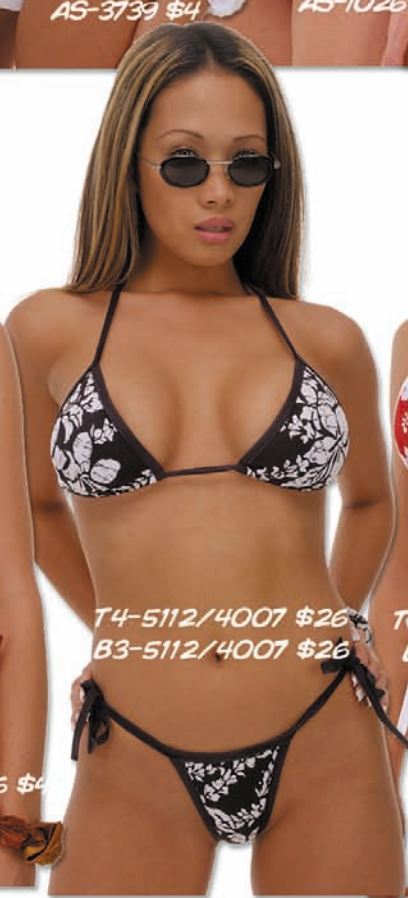
PAGE 22

AS-5402 \$4



T30-5806 \$30  
B30-5806 \$28

AS-5806 \$4



T4-5112/4007 \$26  
B3-5112/4007 \$26



T22-5111/1499 \$28  
B3-5111/1499 \$26

AS-5111 \$4

**B25...: FRINGE THONG**

THE STANDARD B4 THONG WITH A CONTRASTING FRINGE ACCENT ADDED. SEXY PEEK-A-BOO- STYLE. RULE BEATER FOR NON-T-BACK BEACHES.

**B26...: FRENCH BIKINI**

VERY, VERY LOW CUT, TWIN SIDE STRING BIKINI BOTTOM. OO-LA-LA !

THE SUITS ON THIS PAGE ARE OFFERED IN THESE COLORS AND PRINTS :

- 1170 HAWAIIAN FLORAL TRICOT
- 3216 CHARTREUSE HIBISCUS ON LIME TRICOT (WEB VIEW)
- 3217 LIME LIGHTNING ON BLACK TRICOT (WEB VIEW)
- 4007 WET LOOK BLACK FRENCH TRICOT
- 4115 HAIGHT ASHBURY

YOU CAN ORDER SARONG SKIRTS (S2) IN ANY OF THE COLORS OR PRINTS, OR IN COMPLIMENTARY MESH COLORS, CALL 727-441-8789

**T1...: TRIANGLE TOP**

THE T1 IS A SYMMETRICAL ADJUSTABLE TOP WITH NECK AND TORSO TIES.

**T21...: BRAZILIAN TRIANGLE TOP**

THE T21 IS AN ASYMMETRICAL ADJUSTABLE TOP WITH NECK AND TORSO TIES. OPEN FRONT AND MORE CLEAVAGE ENHANCING THAN T1.

STOCK SIZES : XS THRU XL, TOPS AND BOTTOMS SOLD SEPARATELY

ALL FABRICS ARE NYLON/LYCRA®, ALL SUITS LINED IN FRONT

- 4403 MINT PEPPERMINT PATTY TRICOT
- 4808 CLEARCOAT BUCKSKIN
- 5102 WHITE HIBISCUS ON HOT PINK
- 5103 MAUI PINEAPPLE



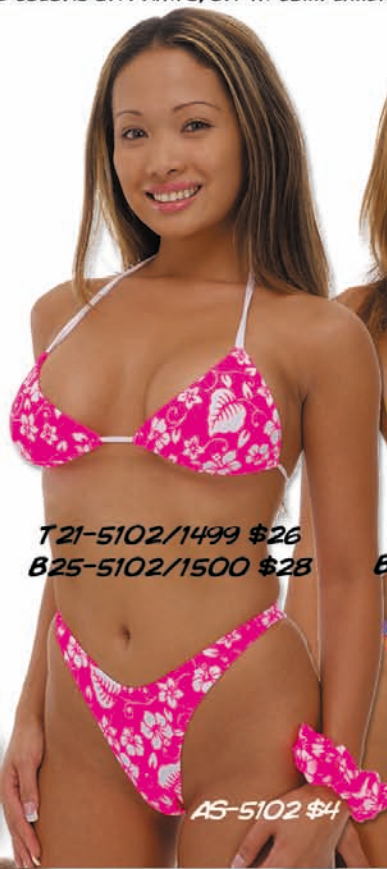
S2-1500 \$19

S2-1508 \$19



REAR VIEW B25

REAR VIEW B26



T21-5102/1499 \$26  
B25-5102/1500 \$28

AS-5102 \$4



T1-1170/1459 \$26  
B25-1170/1572 \$28



T21-4007 \$26  
B26-4007 \$28

AS-4007 \$4



T21-5103 \$26  
B26-5103 \$28



T1-4808 \$26  
B26-4808 \$28

AS-4808 \$4



T1-4403 \$26  
B26-4403 \$28

AS-4403 \$4



T1-4115 \$26  
B26-4115 \$28

AS-4115 \$4

**B5...: RIO**

BIKINI FRONT WITH RIO (HALF BACK COVERAGE) REAR.

**B23...: CANCUN**

SMALL FRONT, RIO BACK, WITH TWIN SIDE STRAPS IN ACCENT COLORS. FRONT AND BACK ARE ADJUSTABLE, SEE R/W/B SUIT REAR VIEW.

**B27...: BANDED RIO**

HALF BACK (RIO) REAR COVERAGE WITH ACCENT WAIST BAND.

THE SUITS ON THIS PAGE ARE OFFERED IN THESE COLORS AND PRINTS :

1003 WET LOOK ROYAL BLUE

1008 WET LOOK RED

1459 CHARTREUSE TRICOT

3216 CHARTREUSE HIBISCUS ON LIME TRICOT

4001 WET LOOK WHITE FRENCH TRICOT

4007 WET LOOK BLACK FRENCH TRICOT

4110 HOT TROPICS TRICOT

4112 LAVA TRICOT

4120 CHARTREUSE HIBISCUS ON HOT PINK (WEB VIEW)

5101 AQUA FLORAL ON SEAFOAM TRICOT

5103 MAUI PINEAPPLE (WEB VIEW)

STOCK SIZES : XS THRU XL, ORDER TOPS AND BOTTOMS SEPARATELY, ALL FABRICS HERE ARE NYLON/LYCRA®

**T1...: TRIANGLE TOP**

THE T1 IS A SYMMETRICAL ADJUSTABLE TOP WITH NECK AND TORSO TIES.

**T2...: SKIMPY BANDED TRIANGLE (ONE SIZE)**

SKIMPY ALTERNATIVE TO T4, ACCENT BINDING TO COMPLIMENT THE B27 BOTTOM.

**T4...: BANDED TRIANGLE**

THE T4 WITH ACCENT BINDING TO COMPLIMENT THE B27 BOTTOM.

**T21...: BRAZILIAN TRIANGLE TOP**

THE T21 IS AN ASYMMETRICAL ADJUSTABLE TOP WITH NECK AND TORSO TIES.



S2-1501 \$19

S2-1506 \$19

T1-1003/1008/4001 \$26  
B23-1003/1008/4.001 \$28

T1-4112/1021/5025 \$26  
B23-4112/1021/5025 \$28

T21-3216/1459/1474 \$26  
B23-3216/1459/1474 \$28

AS-4001 \$4  
AS-1008 \$4  
AS-1003 \$4

AS-1459 \$4  
AS-1026 \$4

REAR VIEW B5 REAR VIEW B23 REAR VIEW B23 REAR VIEW B27



T4-5101/1499 \$26  
B27-5101/1499 \$26

T2-4110/1459 \$26  
B27-4110/1459 \$26

T21-1459 \$26  
B5-1459 \$26

T1-4007 \$26  
B5-4007 \$26

AS-5101 \$4

AS-4110 \$4

AS-1459 \$4

AS-4007 \$4



**B7.... SKINNY SIDE RIO**

ONE OF OUR TOP SELLING SUITS. LOW BIKINI FRONT AND RIO (HALF BACK) REAR COVERAGE CONNECTED BY A SKINNY SIDE STRAP.

**T1.... TRIANGLE TOP**

THE T1 IS A SYMMETRICAL ADJUSTABLE TOP WITH NECK AND TORSO TIES.

**T21.... BRAZILIAN TRIANGLE TOP**

THE T21 IS AN ASYMMETRICAL ADJUSTABLE TOP WITH NECK AND TORSO TIES.

**T8.... STRAP UNDERWIRE**

THE T8 IS OUR SHOULDER STRAP UNDERWIRE TOP THAT PUSHES UP AND IN TO ENHANCE CLEAVAGE WITHOUT THE NEED FOR PUSH UP PADDING.

STOCK SIZES : XS THRU XL. ORDER TOPS AND BOTTOMS SEPARATELY.  
ALL FABRICS HERE ARE NYLON/LYCRRA. ALL SUITS LINED IN FRONT  
ORDER SARONGS (S2) IN ANY PRINT OR STRETCH MESH COLOR  
ALL FABRICS ARE NYLON/LYCRRA®, ALL SUITS LINED IN FRONT

THE SUITS ON THIS PAGE ARE OFFERED IN THESE COLORS AND PRINTS :

- 1021 WET LOOK SUNSHINE YELLOW
- 1026 WET LOOK BURGUNDY
- 1452 HEAVYWEIGHT BLACK TRICOT
- 1814 CLEARCOAT GATOR (WEB VIEW)
- 3001 WET LOOK TURQUOISE FRENCH TRICOT
- 3218 LIQUID BAHAMAS
- 4801 HAWAIIAN MOONSET SILVER MIST
- 5102 WHITE HIBISCUS ON HOT PINK (WEB VIEW)
- 5118 COSMIC WAVE NEUTRON GREEN TRICOT



S2-1505 \$19



S2-1511 \$19



S2-5505 \$19



REAR VIEW B7



T21-5118 \$26  
B7-5118 \$28

AS-5118 \$4



T8-4801 \$40  
B7-4801 \$28

AS-1452 \$4



T1-1452 \$26  
B7-1452 \$28



T1-3218 \$26  
B7-3218 \$28



T1-3001 \$26  
B7-3001 \$28

AS-3001 \$4



T21-1026 \$26  
B7-1026 \$28

AS-1026 \$4



T21-1021 \$26  
B7-1021 \$28

AS-1021 \$4

**B8...: BRAZILIAN**

THE CLASSIC PERFECT FITTING BRAZILIAN (3/4'S) BIKINI BOTTOM.

**B10...: BANDED BRAZILIAN**

THE BRAZILIAN COVERAGE WITH CONTRASTING BANDING THAT FORMS SIDE TIES. LOOKS GREAT WITH EITHER THE T2 OR T4 TOP.

**T1...: TRIANGLE TOP**

THE T1 IS A SYMMETRICAL ADJUSTABLE TOP WITH NECK AND TORSO TIES.

**T4...: BANDED TRIANGLE**

THE T1 WITH ACCENT BINDING TO COMPLIMENT THE B3 BOTTOM..

**T9...: HALTER UNDERWIRE**

OUR UNDERWIRE TOP THAT PUSHES UP AND IN TO ENHANCE CLEAVAGE WITHOUT THE NEED FOR PUSH UP PADS. AROUND THE NECK TIE.

THE SUITS ON THIS PAGE ARE OFFERED IN THESE COLORS AND PRINTS :

- 1024 WET LOOK NEON LIME
- 1499 WHITE HEAVYWEIGHT TRICOT/BLACK BAND
- 4007 WET LOOK BLACK FRENCH TRICOT (WEB VIEW)
- 4111 COOL TROPICS TRICOT (WEB VIEW)
- 4112 LAVA TRICOT/WET LOOK YELLOW BAND
- 4120 CHARTREUSE HIBISCUS ON HOT PINK (WEB VIEW)
- 5104 CAMO/BLACK BAND
- 5108 CLOUDS TRICOT
- 5110 WHITE HIBISCUS ON NAVY BLUE (WEB VIEW)
- 5111 WHITE HIBISCUS ON RUBY RED
- 5112 WHITE FLORAL ON BLACK

STOCK SIZES : XS THRU XL. ORDER TOPS AND BOTTOMS SEPARATELY.  
 ALL FABRICS HERE ARE NYLON/LYCRA®, ALL SUITS LINED IN FRONT  
 ORDER SARONGS (S2) IN ANY PRINT OR STRETCH MESH COLOR  
 ALL FABRICS ARE NYLON/LYCRA®, ALL SUITS LINED IN FRONT



S2-1503 \$19 S2-1500 \$19 S2-5507 \$19



REAR VIEW B10 REAR VIEW B8



T9-5111 \$40



T4-1499/4007 \$26  
 B10-1499/4007 \$26

T4-5104/4007 \$26  
 B10-5104/4007 \$26

T4-4112/1021 \$26  
 B10-4112/1021 \$26

AS-1499 \$4  
 AS-1407 \$4

AS-5104 \$4



T1-5111 \$26  
 B8-5111 \$26

AS-5111 \$4



T1-5108 \$26  
 B8-5108 \$26

AS-5108 \$4



T1-024 \$26  
 B8-1024 \$26



T9-5112 \$40  
 B8-5112 \$26

AS-5112 \$4

**B9...: SKINNY SIDE BRAZILIAN**

LOW FRONT AND 3/4'S (BRAZILIAN) REAR COVERAGE IS CONNECTED BY A SKINNY SIDE STRAP.

**B17...: RIVIERA**

LOW RISE FRONT AND BACK PANEL DESIGN PROVIDES A PROVOCATIVE CURVATURE ENHANCING PROFILE.

**T1...: TRIANGLE (SEE DESCRIPTION ON PAGE 26)**

**T9...: HALTER UNDERWIRE**

OUR UNDERWIRE TOP THAT PUSHES UP AND IN TO ENHANCE CLEAVAGE WITHOUT THE NEED FOR PUSH UP PADS. AROUND THE NECK TIE.

**T17...: RIVIERA HALTER**

OUR 4 PANEL TOP THAT ENHANCES CLEAVAGE WITHOUT THE NEED FOR PUSH UP PADS. AROUND THE NECK AND BACK TIE.

**T21...: BRAZILIAN TRIANGLE**

(SEE DESCRIPTION ON PAGE 25)

THE SUITS ON THIS PAGE ARE OFFERED IN THESE COLORS AND PRINTS :

- |      |  |      |                                  |
|------|--|------|----------------------------------|
| 1003 | WET LOOK ROYAL BLUE                        | 5025 | WET LOOK NEON ORANGE             |
| 1021 | WET LOOK SUNSHINE YELLOW                   | 5101 | AQUA FLORAL ON SEAFOAM TRICOT    |
| 1026 | WET LOOK BURGUNDY                          | 5117 | PINK PALMS                       |
| 4007 | WET LOOK BLACK FRENCH TRICOT               | 5118 | COSMIC WAVE NEUTRON GREEN        |
| 4120 | CHARTREUSE HIBISCUS ON HOT PINK (WEB VIEW) | 5119 | COSMIC WAVE ELECTRON BLUE TRICOT |
|      |  | 5507 | WAVEY BLACK STRETCH MESH         |

" SPECIAL ORDER THE T17/B17 IN YOUR H.S., COLLEGE OR PRO TEAM COLORS "

STOCK SIZES : XS THRU XL  
ORDER TOPS AND BOTTOMS SEPARATELY.  
ALL FABRICS HERE ARE NYLON/LYCRAL.  
ALL SUITS LINED IN FRONT  
ORDER SARONGS (S2) IN ANY PRINT OR STRETCH MESH COLOR



S2-1503 \$19



REAR VIEW B9



REAR VIEW B17



T17-1003/5025 \$28  
B17-1003/5025 \$28



T17-1026/1021 \$28  
B17-1026/1021 \$28

AS-1021 \$4

AS-1026 \$4



T17-4007/5507 \$28  
B17-4007/5507 \$28

THIS FABRIC (5507) IS SEMI-SEE-THRU. HOWEVER WE HAVE LINING BEHIND THE FRONT PANELS. THE BACK PANEL IS UNLINED AND SHOWS SOME FANNY CLEAVAGE !



REAR VIEW B17



T9-5118 \$40  
B9-5118 \$28

AS-5118 \$4



T21-5117 \$26  
B9-5117 \$28

AS-5117 \$4



T1-5119 \$26  
B9-5119 \$28

AS-5119 \$4



T1-5101 \$26  
B9-5101 \$28

AS-5101 \$4

**B11...: CALIFORNIA**

MODERATE CUT SWIMBOTTOM.

**B12...: HIGH WAIST FULL CUT**

GREAT TO COVER CAESAREAN SCARS.

**B13...: V PANEL FULL CUT**

COMFORTABLE V PANEL TOP, GREAT TO COVER CAESAREAN SCARS

**B20...: MONTE CARLO**

LOW, LOW CUT BIKINI BOTTOM WITH ACCENT MARBLE LIKE RINGS

**T1...: TRIANGLE T8...: STRAP UNDERWIRE**

**T12...: FULL CLIP UNDERWIRE**

SHOULDER STRAP FULL CLIP UNDERWIRE SWIMTOP, BACK HOOK.

**T20...: MONTE CARLO TOP**

SPORT SWIMTOP WITH SHOULDER STRAPS AND BACK HOOK.

THE SUITS ON THIS PAGE ARE OFFERED IN THESE COLORS AND PRINTS :

- |      |                              |      |                                    |
|------|------------------------------|------|------------------------------------|
| 1452 | BLACK HEAVYWEIGHT TRICOT     | 5105 | BUBBLES                            |
| 1499 | WHITE HEAVYWEIGHT TRICOT     | 5109 | TEAL FERNS                         |
| 3003 | WET LOOK MIDNIGHT BLUE       | 5112 | WHITE FLORAL (WEB VIEW)            |
| 4007 | WET LOOK BLACK FRENCH TRICOT | 5113 | GREY BLACK ZEBRA TRICOT (WEB VIEW) |
| 4101 | GARDEN OF DELIGHTS           | 5119 | COSMIC WAVE ELECTRON BLUE          |

STOCK SIZES : XS THRU XL, ORDER TOPS AND BOTTOMS SEPARATELY.  
ALL FABRICS HERE ARE NYLON/LYCRA®, ALL SUITS LINED IN FRONT  
ORDER SARONGS (S2) IN ANY PRINT OR STRETCH MESH COLOR



S2-1500 \$19 S2-5501 \$19 REAR VIEW B11



REAR VIEW B20 REAR VIEW B12 REAR VIEW B13



T8-3003 \$40  
B12-3003 \$26

AS-3003 \$4



T20-4101 \$28  
B20-4101 \$28



T20-5105 \$28  
B20-5105 \$28



T12-5109 \$40  
B13-5109 \$30

AS-5109 \$4



T12-1499/1452 \$40  
B13-1499/1452 \$30

AS-1499 \$4

AS-1452 \$4



T1-5119 \$26  
B11-5119 \$26

AS-5119 \$4



T1-4007 \$26  
B11-4007 \$26

AS-4007 \$4

**F4...: ONE PIECE BRAZILIAN CRISS CROSS**

COMFY AND SECURE ONE PIECE SUIT THAT LOOKS LIKE A BIKINI FROM THE REAR. 3/4'S (BRAZILIAN) REAR COVERAGE.

**F5...: ONE PIECE MODERATE CRISS CROSS**

F4 STYLING WITH MODERATE COVERAGE REAR.

**F6...: ONE PIECE FULL CRISS CROSS**

F4 STYLING WITH FULL COVERAGE REAR.

**B29...: TANKINI BOTTOM**

FULL CUT SWIMBOTTOM MADE TO MATCH THE TANKINI TOP.

**T23...: TANKINI TOP**

TANK TOP STYLE WITH SOFT CUPS BUILT IN, LOOSE WAIST, COMFY STRAPS.

ALL FABRICS ARE NYLON/LYCRA®, ORDER TOPS AND BOTTOMS SEPARATELY

THE SUITS ON THIS PAGE ARE OFFERED IN THESE COLORS AND PRINTS :

1170	HAWAIIAN TROPICS TRICOT	5104	CAMO	(WEB VIEW)
3201	BLUE LIGHTNING TRICOT	5112	WHITE FLORAL ON BLACK	(WEB VIEW)
3211	RAZZBERRY HIBISCUS ON ROYAL	5117	PINK PALMS	
3218	LIQUID BAHAMAS	5118	COSMIC WAVE NEUTRON GREEN TRICOT	
4801	HAWAIIAN MOONSET SILVER MIST	5805	LACQUERED LEOPARD	(WEB VIEW)
5107	SKULLS			(WEB VIEW)

STOCK SIZES : XS THRU XL, ORDER SCRUNCHIES (AS)

AND SARONGS (S2) TO MATCH ANY SUIT.



**A4....: TIGHTS**

REGULAR WAIST RISE, ONE INCH WAIST BAND, SKIN TIGHT, AND SEXY.

**T1....: TRIANGLE TOP**

THE T1 IS A SYMMETRICAL ADJUSTABLE TOP WITH NECK AND TORSO TIES.

**T7....: HOLE IN ONE**

OVER ONE SHOULDER, CLEAVAGE ENHANCING, KEYHOLE FRONT TOP.

**T11....: FUN AND SUN TOP**

SHOULDER STRAPS AND LOW OPEN FRONT, SECURE BUT SEXY.

**T21....: BRAZILIAN TRIANGLE TOP**

THE T21 IS AN ASYMMETRICAL ADJUSTABLE TOP WITH NECK AND TORSO TIES.

STOCK SIZES S, M, THRU XL, ORDER TOPS AND TIGHTS SEPARATELY

THE ITEMS ON THIS PAGE ARE OFFERED IN THESE COLORS AND PRINTS :

4007 WET LOOK BLACK FRENCH TRICOT

4807 CLEARCOAT RAWHIDE

4863 GLOSS BABY BLUE STRETCH VINYL/NYLON/LYCRA

4871 GLOSS LIME SUPER STRETCH VINYL/NYLON/LYCRA

5800 GLOSS WHITE SUPER STRETCH VINYL/NYLON/LYCRA

5807 GLOSS BLACK SUPER STRETCH VINYL/NYLON/LYCRA

5808 GLOSS RED SUPER STRETCH VINYL/NYLON/LYCRA

NOTE : THE SUPER STRETCH VINYL IS NEW AND AN IMPROVEMENT IN COMFORT AND STRETCHABILITY.



T11-5807 \$26  
A4-5807 \$40



REAR VIEW A4

T7-4871 \$26  
A4-4871 \$40



T1-4007 \$26  
A4-4007 \$35



T21-4807 \$26  
A4-4807 \$40



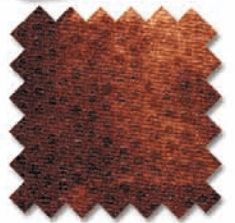
T11-5800 \$26  
A4-5800 \$40



T11-4863 \$26  
A4-4863 \$40



T11-5808 \$26  
A4-5808 \$40



FABRIC 4807

**C1...: CATSUIT**

THE CATSUIT IS FULL BODY WITH AN INVISIBLE BACK ZIPPER. GREAT AS A FOUNDATION, OR, GO SOLO WITH BOOTS AND A BELT.

**C4...: CAMICAT**

THE C4 (NEW) HAS A SEAMLESS FRONT (SKINZ EXCLUSIVE !) SPAGHETTI SHOULDER STRAPS AND MID BACK OPENING FOR EASY ENTRY AND EXIT.

**D1...: MINI DRESS**

THE D1 DRESS IS OUR MEGA POPULAR VINYL CLUB DRESS. HOT !

STOCK SIZES : XS THRU XL

VISIT OUR WEBSITE FOR MORE COLOR CHOICES !

THE ITEMS ON THIS PAGE ARE OFFERED IN THESE COLORS AND PRINTS :

4007 WET LOOK BLACK FRENCH TRICOT

4863 GLOSS YELLOW STRETCH VINYL/LYCRA

4868 SUPER STRETCH GLOSS TURQUOISE STRETCH VINYL/LYCRA

4869 SUPER STRETCH GLOSS HOT PINK STRETCH VINYL/LYCRA

4870 SUPER STRETCH GLOSS ORANGE STRETCH VINYL/LYCRA (WEB VIEW)

5807 SUPER STRETCH GLOSS BLACK STRETCH VINYL/LYCRA

5809 WHITE SNAKE

5812 LIQUID GOLD (METALLIC)

5813 LIQUID SILVER (METALLIC)

NOTE : THE SUPER STRETCH VINYL IS NEW AND AN IMPROVEMENT IN COMFORT AND STRETCHABILITY.



REAR VIEW D1 D1-4869 \$40 D1-4864 \$40 D1-5807 \$40



REAR VIEW C4 C4-4868 \$80



REAR VIEW C1 C1-5812 \$90 C1-4007 \$70 C1-5809 \$70 C4-5813 \$80 C4-5807 \$80

**RUSH® BOARDSHORTS**

DESCRIPTION : WE HAVE BEEN ASKED TO STOCK SOME "COVER-UPS" FOR MEN. NOW WE HAVE SOME SURFER STYLE BAGGIES FROM RUSH® BOARDSHORTS THAT CAN DO DOUBLE DUTY AS COVER-UPS AND CASUAL SHORTS FOR SOCIAL SCENES. SIZED IN INCHES AROUND THE WAIST : 30", 32", 34", 36", 38", 40". THE SHORTS ON THIS PAGE ARE OFFERED IN THESE COLORS AND PRINTS :

- RBS-1001 BLACK WITH HIBISCUS RED BAND & POCKET
- RBS-1002 BLACK WITH HIBISCUS BLUE BAND & POCKET
- RBS-1003 SOLID BLUE-WHITE STITCHING
- RBS-1004 HIBISCUS BLACK-WHITE STITCHING
- RBS-1005 HIBISCUS BLUE-WHITE STITCHING
- RBS-1007 SOLID BLACK-WHITE STITCHING
- RBS-1008 SOLID RED-BLACK STITCHING
- RBS-1009 SOLID BROWN-YELLOW STITCHING

ALL QUICK DRY MICROFIBER WITH VELCRO POCKET & KEY STRAP



RBS-1005 \$19.99



RBS-1008 \$19.99



RBS-1004 \$19.99



REAR VIEW RBS



REAR VIEW RBS



RBS-1001 \$21.99



RBS-1003 \$19.99



RBS-1009 \$19.99



RBS-1002 \$21.99



RBS-1007 \$19.99

**Skinzwear.com.inc**

2SKINZWEAR.COM.INC

2027 GULF TO BAY BLVD.

CLEARWATER, FLORIDA 33765

UNITED STATES OF AMERICA

\* 19 YEARS IN BUSINESS \*

HTTP://WWW.SKINZWEAR.COM

PRESORTED STD  
U.S. POSTAGE  
PAID  
CLEARWATER FL  
PERMIT NO 892